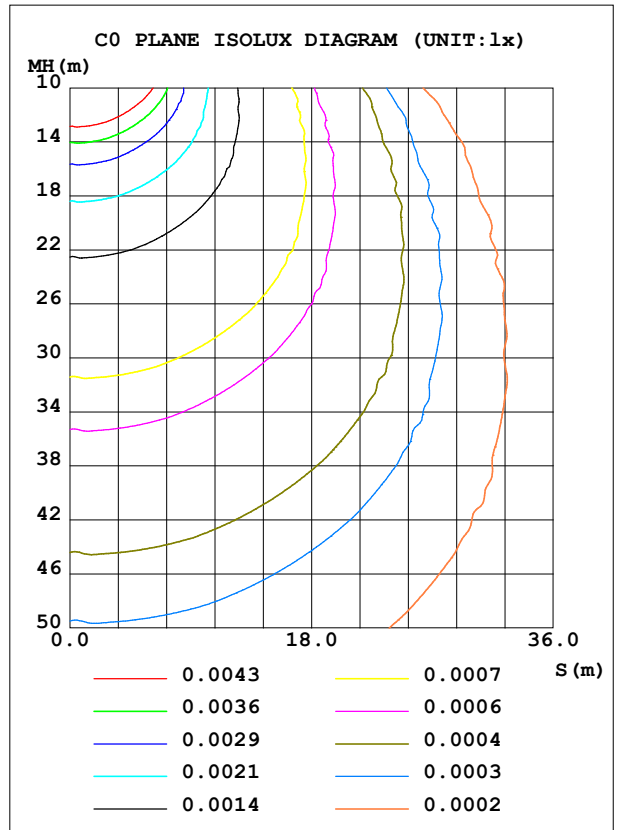
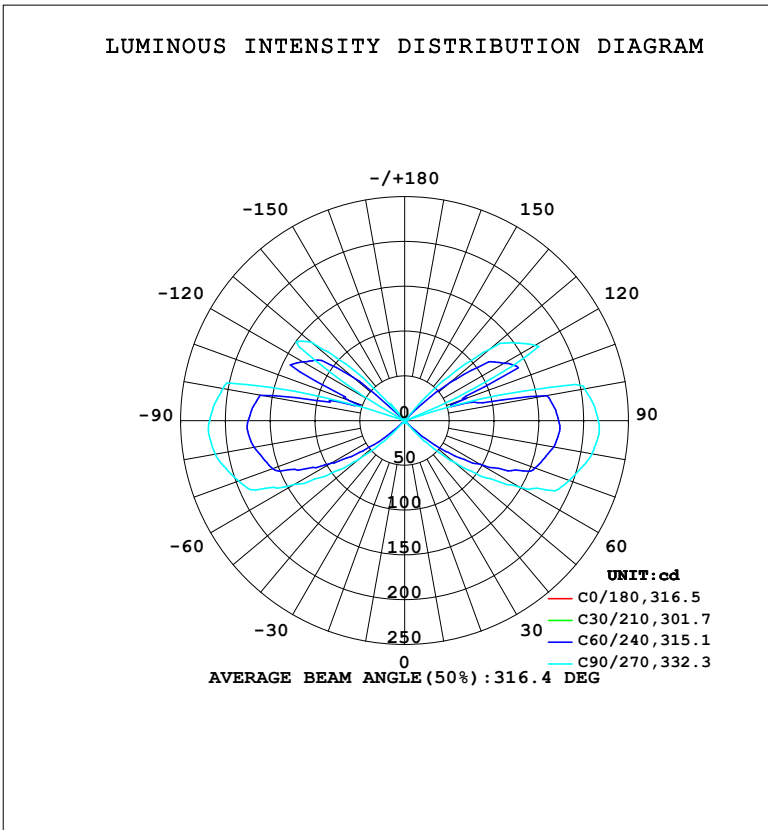


LUMINAIRE PHOTOMETRIC TEST REPORT

Test:U:230.32V I:0.0784A P:10.513W PF:0.5823 Freq:50.00Hz Lamp Flux:504.403x1 lm		
NAME:	TYPE:	WEIGHT:
SPEC.: 3000K	DIM.:	SERIAL No.:
MFR.: EVERFINE	SUR.:	Shielding Angle:

DATA OF LAMP		PHOTOMETRIC DATA				Eff: 47.98 lm/W
MODEL	W12	I _{max} (cd)	230.8	S/MH (C0/180)	1.15	
NOMINAL POWER (W)	10	LOR (%)	100.0	S/MH (C90/270)	15.84	
RATED VOLTAGE (V)	230	TOTAL FLUX (lm)	504.45	η UP, DN (C0-180)	23.6, 28.2	
NOMINAL FLUX (lm)	504.403	CIE CLASS	DIFFUSE	η UP, DN (C180-360)	20.7, 27.6	
LAMPS INSIDE	1	η up (%)	44.3	CIBSE SHR NOM	0.00	
TEST VOLTAGE (V)	230	η down (%)	55.8	CIBSE SHR MAX	0.30	



C Range: 0 - 360DEG
 C Interval: 15.0DEG
 Test Speed: HIGH
 Temperature: 25.3°C
 Operators: DAMIN
 Test Date: 2024-09-26

γ Range: 0 - 180DEG
 γ Interval: 1.0DEG
 Test System: EVERFINE GO-2000B_V1 SYSTEM V2.00.473
 Humidity: 65.0%
 Test Distance: 9.401m [K=1.0000]
 Remarks:

ZONAL FLUX DIAGRAM

ZONAL FLUX DIAGRAM:

γ	C0	C45	C90	C135	C180	C225	C270	C315	γ	Φ zone	Φ total	%lum, lamp
10	0.6446	0.6431	0.6377	0.6410	0.6022	0.6596	0.7757	0.7150	0- 10	0.0616	0.0616	0.01,0.01
20	0.6410	0.8859	1.626	0.9014	0.5281	0.8018	1.888	0.9330	10- 20	0.2230	0.2846	0.06,0.06
30	0.6310	1.515	2.214	1.682	0.4859	1.503	2.697	1.840	20- 30	0.5819	0.8664	0.17,0.17
40	0.5875	1.610	3.526	1.830	0.4471	1.669	3.927	2.238	30- 40	1.043	1.910	0.38,0.38
50	0.5228	2.501	71.83	3.876	0.4041	2.389	69.38	3.200	40- 50	7.043	8.953	1.77,1.77
60	0.4634	12.19	148.7	57.17	0.3502	13.60	142.2	39.20	50- 60	31.75	40.71	8.07,8.07
70	0.4203	28.37	195.5	107.4	0.3233	30.29	197.3	83.10	60- 70	64.21	104.9	20.8,20.8
80	0.3179	32.46	212.5	125.4	0.2910	39.90	215.0	101.6	70- 80	84.14	189.1	37.5,37.5
90	0.3205	33.79	216.2	129.1	0.3287	46.95	217.8	104.1	80- 90	92.17	281.2	55.8,55.8
100	0.3517	25.81	204.3	92.40	0.4012	40.08	206.1	81.43	90-100	89.91	371.1	73.6,73.6
110	0.4253	1.212	3.479	31.41	0.4040	1.326	3.589	2.767	100-110	45.33	416.5	82.6,82.6
120	0.5711	1.765	168.1	44.28	0.3608	2.041	30.38	5.463	110-120	34.95	451.4	89.5,89.5
130	0.2373	1.162	124.0	1.964	0.2139	1.215	136.1	1.605	120-130	39.17	490.6	97.3,97.3
140	0.2592	1.880	16.67	1.378	0.2110	1.928	25.51	1.006	130-140	12.57	503.2	99.7,99.8
150	0.2616	0.3198	2.530	0.3102	0.3943	0.3388	2.646	0.3246	140-150	0.8914	504.1	99.9,99.9
160	0.5290	0.6742	0.2589	8.203	0.1831	0.1902	0.5213	0.4106	150-160	0.2793	504.3	100,100
170	0.1293	0	0.0005	0	0.1238	0.1605	0	0.0728	160-170	0.1076	504.4	100,100
180	0.0754	0.0238	0	0	0.0862	0.0297	0	0	170-180	0.0046	504.4	100,100
DEG	LUMINOUS INTENSITY:cd									UNIT:lm		

Conical surface Flux(90deg): 3.3733 lm

%lum = 0.7%

%lamp = 0.7%

Conical surface Flux(130deg): 68.805 lm

%lum = 13.6%

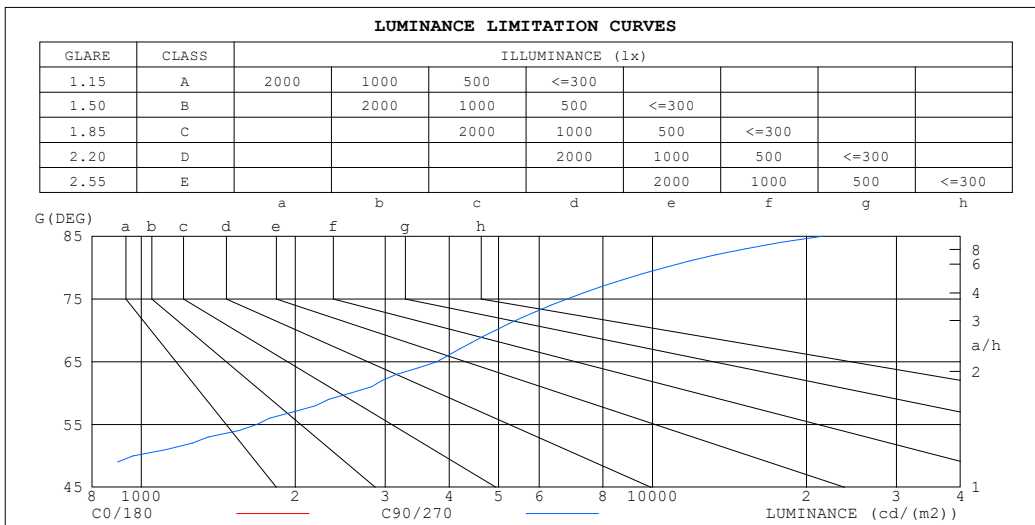
%lamp = 13.6%

C Range: 0 - 360DEG
 C Interval: 15.0DEG
 Test Speed: HIGH
 Temperature:25.3°C
 Operators:DAMIN
 Test Date:2024-09-26

γ Range: 0 - 180DEG
 γ Interval: 1.0DEG
 Test System:EVERFINE GO-2000B_V1 SYSTEM V2.00.473
 Humidity:65.0%
 Test Distance:9.401m [K=1.0000]
 Remarks:

LUMINANCE LIMITATION CURVES

Test:U:230.32V I:0.0784A P:10.513W PF:0.5823 Freq:50.00Hz Lamp Flux:504.403x1 lm		
NAME:	TYPE:	WEIGHT:
SPEC.: 3000K	DIM.:	SERIAL No.:
MFR.: EVERFINE	SUR.:	Shielding Angle:



LUMINANCE cd/(m2)		
G (DEG)	C0/180	C90/270
85	41	21437
80	20	10547
75	15	6799
70	14	4927
65	12	3781
60	10	2563
55	10	1680
50	9	963
45	9	419

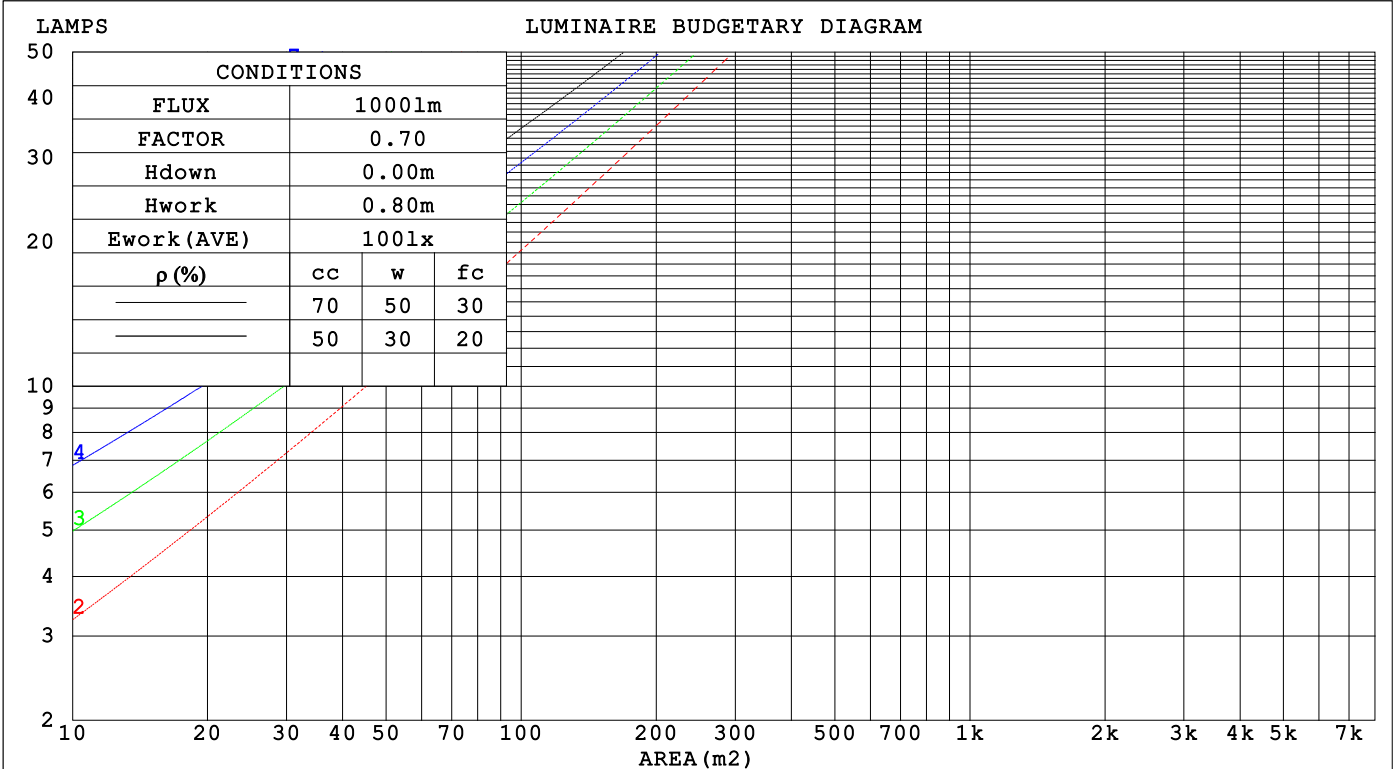
C Range: 0 - 360DEG
 C Interval: 15.0DEG
 Test Speed: HIGH
 Temperature: 25.3°C
 Operators: DAMIN
 Test Date: 2024-09-26

γ Range: 0 - 180DEG
 γ Interval: 1.0DEG
 Test System: EVERFINE GO-2000B_V1 SYSTEM V2.00.473
 Humidity: 65.0%
 Test Distance: 9.401m [K=1.0000]
 Remarks:

CU AND LUMINAIRE BUDGETARY ESTIMATE DIAGRAM

Test:U:230.32V I:0.0784A P:10.513W PF:0.5823 Freq:50.00Hz Lamp Flux:504.403x1 lm		
NAME:	TYPE:	WEIGHT:
SPEC.: 3000K	DIM.:	SERIAL No.:
MFR.: EVERFINE	SUR.:	Shielding Angle:

ρ_{cc}	80%			70%			50%			30%			10%			0
ρ_w	50%	30%	10%	50%	30%	10%	50%	30%	10%	50%	30%	10%	50%	30%	10%	0
ρ_{fc}	20%			20%			20%			20%			20%			0
RCR	RCR:Room Cavity Ratio						Coefficients of Utilization(CU)									
0.0	1.09	1.09	1.09	1.01	1.01	1.01	.87	.87	.87	.73	.73	.73	.61	.61	.61	.56
1.0	.81	.73	.66	.74	.67	.61	.61	.56	.51	.50	.46	.42	.39	.36	.33	.27
2.0	.66	.55	.47	.60	.51	.43	.49	.41	.35	.38	.33	.28	.29	.25	.21	.15
3.0	.55	.44	.35	.50	.40	.32	.40	.32	.26	.31	.25	.20	.23	.18	.14	.09
4.0	.47	.36	.27	.42	.33	.25	.34	.26	.20	.26	.20	.15	.19	.14	.10	.06
5.0	.41	.30	.22	.37	.27	.20	.30	.22	.16	.23	.16	.11	.17	.11	.07	.04
6.0	.36	.26	.18	.33	.23	.16	.26	.19	.13	.20	.14	.09	.15	.10	.06	.02
7.0	.32	.22	.15	.29	.20	.14	.24	.16	.11	.18	.12	.08	.13	.08	.05	.02
8.0	.29	.20	.13	.26	.18	.12	.21	.14	.09	.17	.11	.06	.12	.07	.04	.01
9.0	.26	.17	.11	.24	.16	.10	.19	.13	.08	.15	.10	.06	.11	.07	.03	.01
10.0	.24	.16	.10	.22	.14	.09	.18	.11	.07	.14	.09	.05	.10	.06	.03	.01



C Range: 0 - 360DEG
 C Interval: 15.0DEG
 Test Speed: HIGH
 Temperature:25.3°C
 Operators:DAMIN
 Test Date:2024-09-26

γ Range: 0 - 180DEG
 γ Interval: 1.0DEG
 Test System:EVERFINE GO-2000B_V1 SYSTEM V2.00.473
 Humidity:65.0%
 Test Distance:9.401m [K=1.0000]
 Remarks:

WEC AND CCEC

Test:U:230.32V I:0.0784A P:10.513W PF:0.5823 Freq:50.00Hz								
Lamp Flux:504.403x1 lm								
NAME:			TYPE:			WEIGHT:		
SPEC.: 3000K			DIM.:			SERIAL No.:		
MFR.: EVERFINE			SUR.:			Shielding Angle:		

ρ_{CC}	80%			70%			50%			30%			10%			0
ρ_w	50%	30%	10%	50%	30%	10%	50%	30%	10%	50%	30%	10%	50%	30%	10%	0
ρ_{fc}	20%			20%			20%			20%			20%			0
RCR	RCR:Room Cavity Ratio						Wall Exitance Coefficients(WEC)									
0.0																
1.0	.546	.311	.098	.525	.300	.095	.486	.279	.089	.449	.259	.083	.416	.241	.078	
2.0	.428	.235	.072	.409	.225	.069	.373	.207	.064	.340	.191	.060	.309	.175	.055	
3.0	.359	.191	.057	.341	.183	.055	.308	.167	.051	.277	.152	.047	.249	.138	.043	
4.0	.310	.161	.047	.294	.154	.045	.264	.140	.042	.235	.126	.038	.209	.114	.035	
5.0	.273	.139	.040	.259	.133	.039	.231	.120	.035	.205	.108	.032	.181	.097	.029	
6.0	.245	.123	.035	.231	.117	.034	.206	.105	.031	.182	.094	.028	.159	.084	.025	
7.0	.221	.109	.031	.209	.104	.030	.185	.094	.027	.163	.084	.024	.143	.074	.022	
8.0	.202	.099	.028	.191	.094	.027	.169	.084	.024	.149	.075	.022	.129	.066	.019	
9.0	.186	.090	.025	.176	.086	.024	.155	.077	.022	.136	.068	.020	.118	.060	.017	
10.0	.173	.083	.023	.163	.079	.022	.144	.070	.020	.126	.063	.018	.109	.055	.016	

ρ_{CC}	80%			70%			50%			30%			10%			0
ρ_w	50%	30%	10%	50%	30%	10%	50%	30%	10%	50%	30%	10%	50%	30%	10%	0
ρ_{fc}	20%			20%			20%			20%			20%			0
RCR	RCR:Room Cavity Ratio						Ceiling Cavity Exitance Coefficients(CCEC)									
0.0	.528	.528	.528	.451	.451	.451	.308	.308	.308	.177	.177	.177	.057	.057	.057	
1.0	.537	.494	.456	.459	.424	.392	.314	.292	.271	.181	.169	.158	.058	.054	.051	
2.0	.533	.473	.424	.456	.408	.366	.313	.282	.255	.180	.164	.150	.058	.053	.049	
3.0	.526	.459	.406	.451	.396	.352	.309	.275	.247	.179	.161	.145	.057	.052	.048	
4.0	.517	.448	.395	.444	.387	.343	.305	.270	.242	.177	.158	.143	.057	.051	.047	
5.0	.509	.439	.388	.437	.380	.337	.301	.265	.238	.174	.156	.141	.056	.051	.047	
6.0	.501	.432	.383	.430	.374	.333	.297	.262	.236	.172	.154	.140	.056	.050	.046	
7.0	.493	.426	.379	.424	.369	.330	.293	.259	.234	.170	.152	.139	.055	.050	.046	
8.0	.485	.420	.376	.418	.365	.328	.289	.256	.233	.168	.151	.139	.054	.050	.046	
9.0	.478	.416	.374	.412	.361	.326	.285	.254	.231	.166	.150	.138	.054	.049	.046	
10.0	.472	.412	.372	.407	.358	.325	.282	.252	.231	.165	.149	.138	.053	.049	.046	

C Range: 0 - 360DEG
 C Interval: 15.0DEG
 Test Speed: HIGH
 Temperature:25.3°C
 Operators:DAMIN
 Test Date:2024-09-26

γ Range: 0 - 180DEG
 γ Interval: 1.0DEG
 Test System:EVERFINE GO-2000B_V1 SYSTEM V2.00.473
 Humidity:65.0%
 Test Distance:9.401m [K=1.0000]
 Remarks:

UGR(Unified Glare Rating) Table

Test:U:230.32V I:0.0784A P:10.513W PF:0.5823 Freq:50.00Hz										
Lamp Flux:504.403x1 lm										
NAME:			TYPE:				WEIGHT:			
SPEC.: 3000K			DIM.:				SERIAL No.:			
MFR.: EVERFINE			SUR.:				Shielding Angle:			
ceiling/cavity	0.7	0.7	0.5	0.5	0.3	0.7	0.7	0.5	0.5	0.3
walls	0.5	0.3	0.5	0.3	0.3	0.5	0.3	0.5	0.3	0.3
working plane	0.2	0.2	0.2	0.2	0.2	0.2	0.2	0.2	0.2	0.2
Room dimensions	Viewed crosswise					Viewed endwise				
x = 2H y = 2H	-11.7	-10.4	-10.9	-9.6	-8.5	17.2	18.5	18.0	19.4	20.5
3H	-11.4	-10.2	-10.6	-9.3	-8.2	22.7	23.8	23.5	24.7	25.9
4H	-11.1	-10.0	-10.3	-9.1	-7.9	25.1	26.2	25.9	27.1	28.3
6H	-10.7	-9.6	-9.8	-8.7	-7.5	27.6	28.7	28.5	29.6	30.8
8H	-10.3	-9.3	-9.5	-8.4	-7.2	28.9	30.0	29.8	30.9	32.1
12H	-9.8	-8.8	-8.9	-7.9	-6.7	30.4	31.4	31.3	32.4	33.6
4H 2H	8.5	9.6	9.3	10.5	11.7	17.2	18.3	18.1	19.2	20.4
3H	8.3	9.4	9.2	10.3	11.5	23.2	24.2	24.1	25.2	26.4
4H	8.2	9.1	9.1	10.0	11.3	26.0	26.9	26.9	27.9	29.1
6H	8.0	8.8	8.9	9.8	11.0	28.8	29.6	29.7	30.6	31.8
8H	7.9	8.7	8.8	9.7	10.9	30.3	31.1	31.2	32.0	33.3
12H	7.8	8.6	8.7	9.5	10.8	31.9	32.6	32.8	33.6	34.9
8H 4H	16.4	17.2	17.3	18.2	19.4	26.0	26.8	26.9	27.7	29.0
6H	16.3	17.0	17.2	18.0	19.2	29.3	30.0	30.2	30.9	32.2
8H	16.2	16.8	17.2	17.8	19.1	31.0	31.7	32.0	32.7	34.0
12H	16.1	16.7	17.1	17.7	19.0	33.0	33.6	34.0	34.6	35.9
12H 4H	19.2	19.9	20.1	20.9	22.2	25.9	26.6	26.8	27.6	28.9
6H	19.5	20.1	20.4	21.1	22.4	29.2	29.8	30.2	30.8	32.1
8H	19.4	20.0	20.4	21.0	22.3	31.1	31.7	32.1	32.7	34.0
Variations with the observer position at spacings(CIE Pub.117):										
S = 1.0H	+ 0.1 / - 0.1					+ 0.1 / - 0.1				
1.5H	+ 0.4 / - 0.1					+ 0.2 / - 0.3				
2.0H	+ 0.8 / - 0.6					+ 0.3 / - 0.4				

CIE Pub.117, 504.4 lm Total Lamp Luminous Flux Correct (8log(F/F0) = -2.4)
 Area: 0.1 m2

C Range: 0 - 360DEG
 C Interval: 15.0DEG
 Test Speed: HIGH
 Temperature:25.3°C
 Operators:DAMIN
 Test Date:2024-09-26

γ Range: 0 - 180DEG
 γ Interval: 1.0DEG
 Test System:EVERFINE GO-2000B_V1 SYSTEM V2.00.473
 Humidity:65.0%
 Test Distance:9.401m [K=1.0000]
 Remarks:

UTILIZATION FACTORS TABLE

Test:U:230.32V I:0.0784A P:10.513W PF:0.5823 Freq:50.00Hz Lamp Flux:504.403x1 lm		
NAME:	TYPE:	WEIGHT:
SPEC.: 3000K	DIM.:	SERIAL No.:
MFR.: EVERFINE	SUR.:	Shielding Angle:

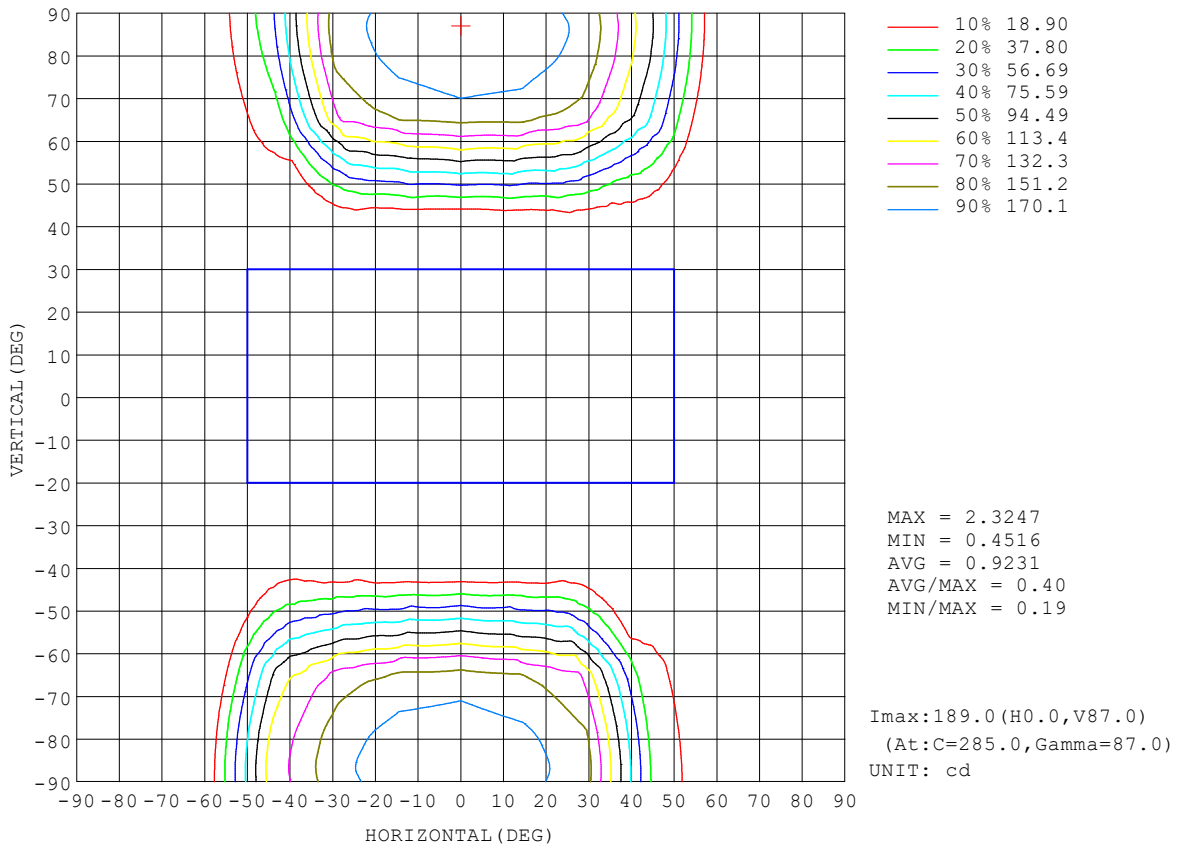
REFLECTANCE										
Ceiling	0.8	0.8	0.8	0.7	0.7	0.7	0.5	0.5	0.5	0
Walls	0.7	0.5	0.3	0.7	0.5	0.3	0.7	0.5	0.3	0
Working plane	0.2	0.2	0.2	0.2	0.2	0.2	0.2	0.2	0.2	0
ROOM INDEX	UTILIZATION FACTORS (PERCENT) $k(RI) \times RCR = 5$									
k = 0.60	31	17	9	29	16	9	27	15	8	1
0.80	38	23	13	36	21	12	32	19	11	2
1.00	44	28	17	41	26	16	36	26	14	3
1.25	51	34	22	47	32	21	41	28	18	5
1.50	56	39	27	52	37	26	44	32	22	7
2.00	64	48	36	59	45	34	50	39	29	12
2.50	70	55	43	65	51	40	55	44	35	16
3.00	74	60	49	69	56	46	58	48	39	19
4.00	81	68	58	75	63	54	63	54	46	24
5.00	85	74	64	78	68	60	67	59	52	28
ROOM INDEX	UF(total)									Direct
According to DIN EN 13032-2 2004			Suspended				SHRNOM = 1.25			

C Range: 0 - 360DEG
 C Interval: 15.0DEG
 Test Speed: HIGH
 Temperature:25.3°C
 Operators:DAMIN
 Test Date:2024-09-26

γ Range: 0 - 180DEG
 γ Interval: 1.0DEG
 Test System:EVERFINE GO-2000B_V1 SYSTEM V2.00.473
 Humidity:65.0%
 Test Distance:9.401m [K=1.0000]
 Remarks:

ISOCANDELA DIAGRAM

Test:U:230.32V I:0.0784A P:10.513W PF:0.5823 Freq:50.00Hz Lamp Flux:504.403x1 lm		
NAME:	TYPE:	WEIGHT:
SPEC.: 3000K	DIM.:	SERIAL No.:
MFR.: EVERFINE	SUR.:	Shielding Angle:

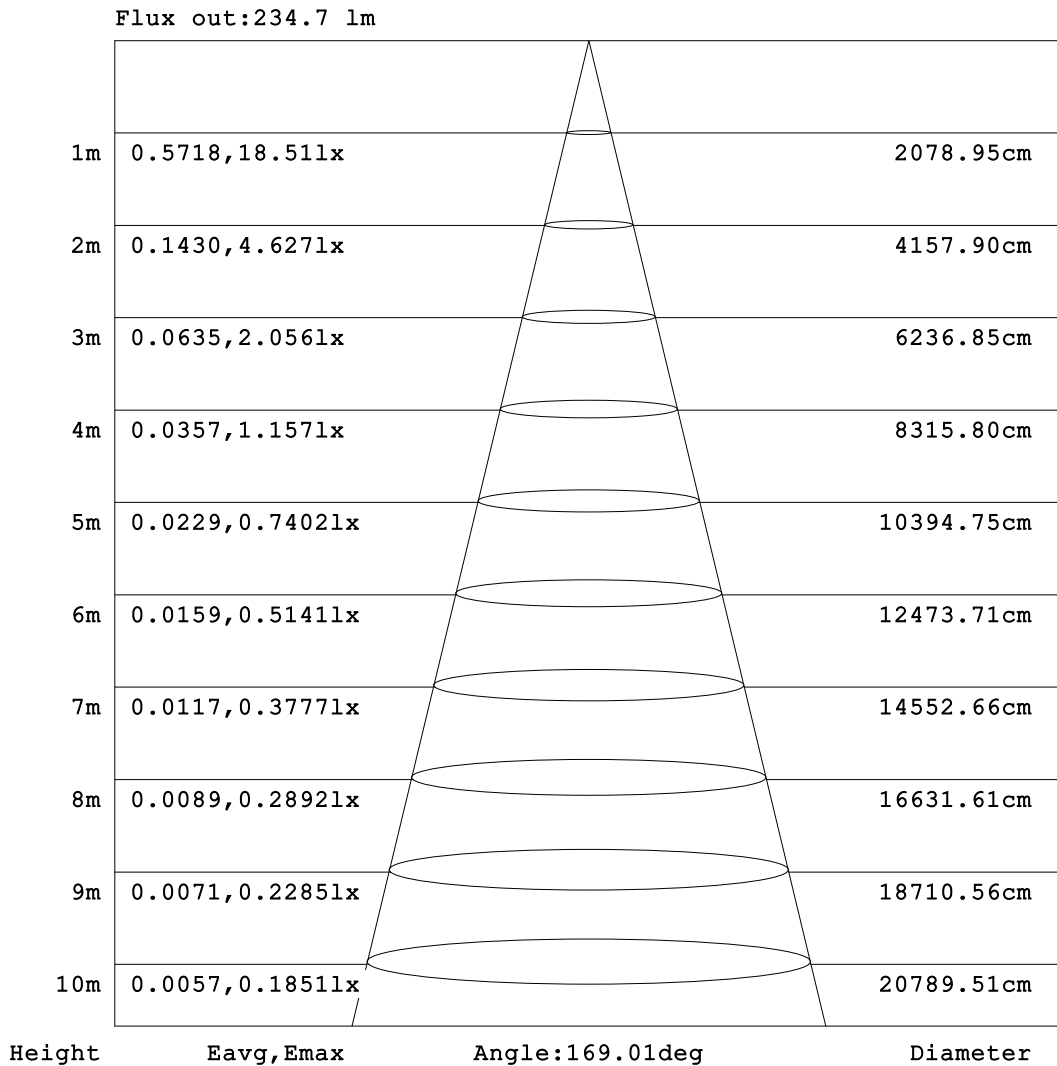


C Range: 0 - 360DEG
 C Interval: 15.0DEG
 Test Speed: HIGH
 Temperature:25.3°C
 Operators:DAMIN
 Test Date:2024-09-26

γ Range: 0 - 180DEG
 γ Interval: 1.0DEG
 Test System:EVERFINE GO-2000B_V1 SYSTEM V2.00.473
 Humidity:65.0%
 Test Distance:9.401m [K=1.0000]
 Remarks:

AAI Figure

Test:U:230.32V I:0.0784A P:10.513W PF:0.5823 Freq:50.00Hz Lamp Flux:504.403x1 lm		
NAME:	TYPE:	WEIGHT:
SPEC.: 3000K	DIM.:	SERIAL No.:
MFR.: EVERFINE	SUR.:	Shielding Angle:



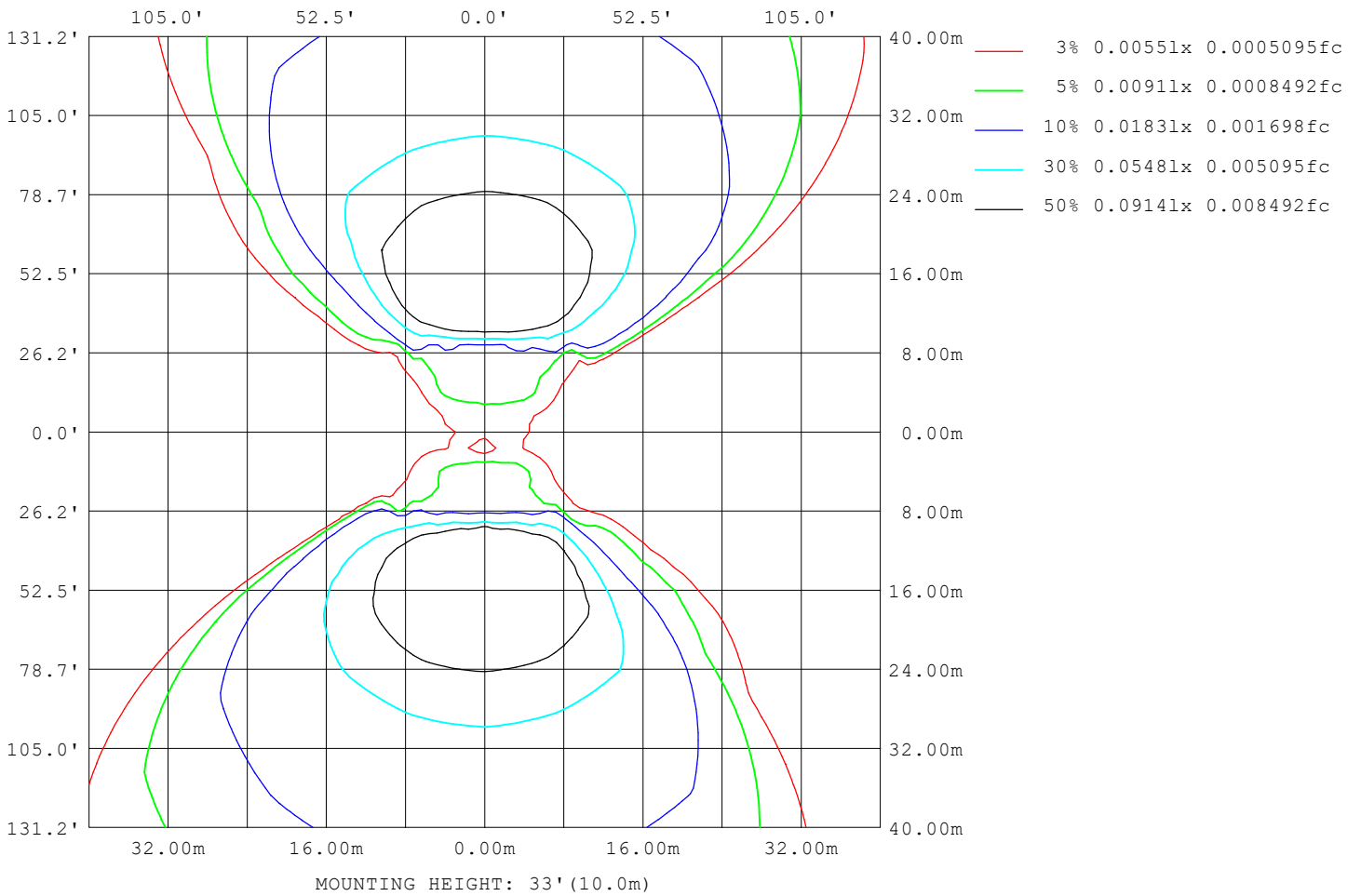
Note: The Curves indicate the illuminated area and the average illumination when the luminaire is at different distance.

C Range: 0 - 360DEG
C Interval: 15.0DEG
Test Speed: HIGH
Temperature: 25.3°C
Operators: DAMIN
Test Date: 2024-09-26

γ Range: 0 - 180DEG
γ Interval: 1.0DEG
Test System: EVERFINE GO-2000B_V1 SYSTEM V2.00.473
Humidity: 65.0%
Test Distance: 9.401m [K=1.0000]
Remarks:

ISOLUX DIAGRAM

Test:U:230.32V I:0.0784A P:10.513W PF:0.5823 Freq:50.00Hz Lamp Flux:504.403x1 lm		
NAME:	TYPE:	WEIGHT:
SPEC.: 3000K	DIM.:	SERIAL No.:
MFR.: EVERFINE	SUR.:	Shielding Angle:



C Range: 0 - 360DEG
 C Interval: 15.0DEG
 Test Speed: HIGH
 Temperature:25.3°C
 Operators:DAMIN
 Test Date:2024-09-26

γ Range: 0 - 180DEG
 γ Interval: 1.0DEG
 Test System:EVERFINE GO-2000B_V1 SYSTEM V2.00.473
 Humidity:65.0%
 Test Distance:9.401m [K=1.0000]
 Remarks:

LED Avg.L Report

Test:U:230.32V I:0.0784A P:10.513W PF:0.5823 Freq:50.00Hz Lamp Flux:504.403x1 lm		
NAME:	TYPE:	WEIGHT:
SPEC.: 3000K	DIM.:	SERIAL No.:
MFR.: EVERFINE	SUR.:	Shielding Angle:

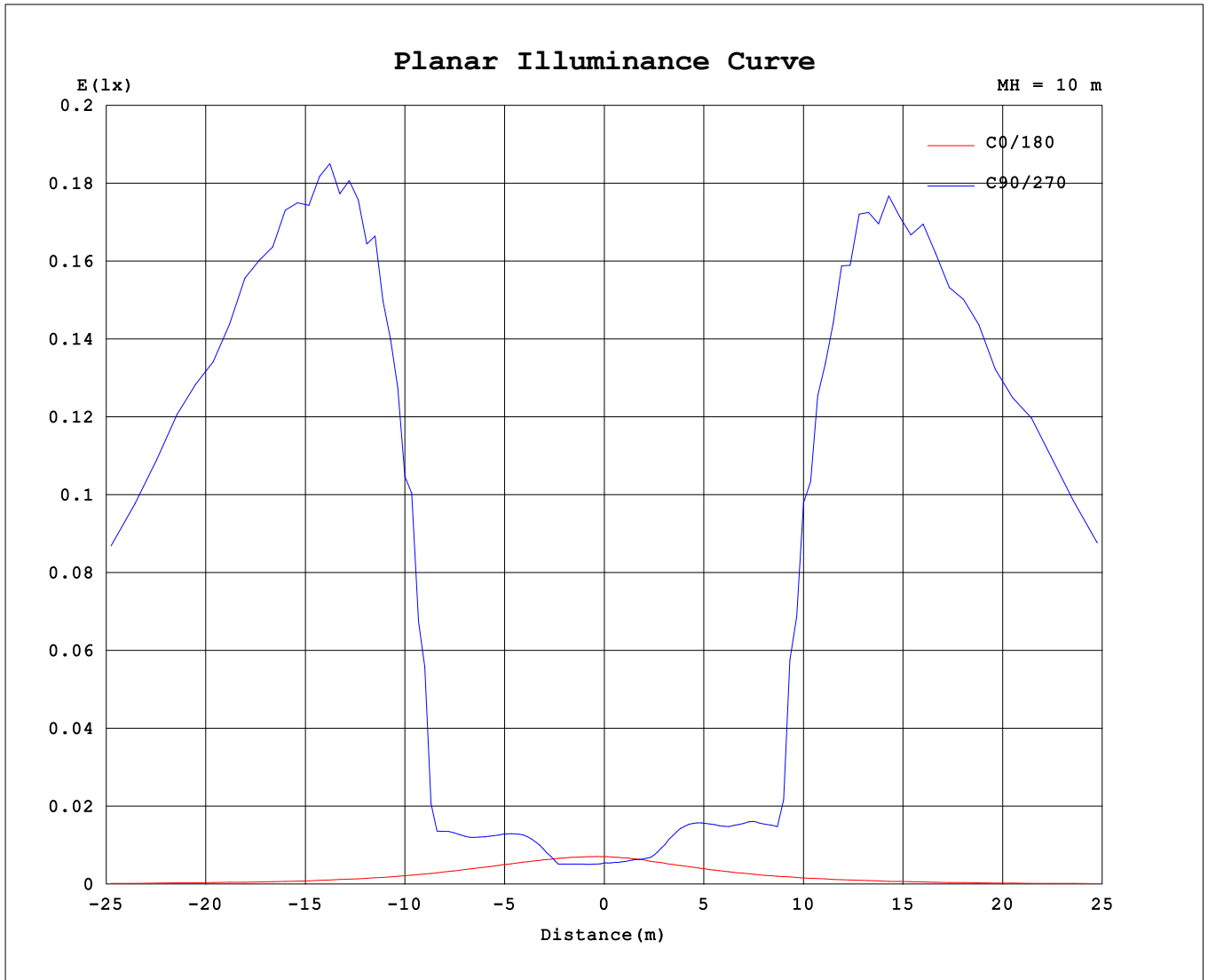
AvgL	cd/m2
L_0~180 (65) av	9
L_0~180 (75) av	12
L_0~180 (85) av	35
L_90~270 (65) av	4372
L_90~270 (75) av	7935
L_90~270 (85) av	24978
L_45 (65) av	1100
L_45 (75) av	2765
L_45 (85) av	8920

Standard: GB/T 29293-2012

C Range: 0 - 360DEG
 C Interval: 15.0DEG
 Test Speed: HIGH
 Temperature:25.3°C
 Operators:DAMIN
 Test Date:2024-09-26

γ Range: 0 - 180DEG
 γ Interval: 1.0DEG
 Test System:EVERFINE GO-2000B_V1 SYSTEM V2.00.473
 Humidity:65.0%
 Test Distance:9.401m [K=1.0000]
 Remarks:

Planar Illuminance Curve



C Range: 0 - 360DEG
 C Interval: 15.0DEG
 Test Speed: HIGH
 Temperature: 25.3°C
 Operators: DAMIN
 Test Date: 2024-09-26

γ Range: 0 - 180DEG
 γ Interval: 1.0DEG
 Test System: EVERFINE GO-2000B_V1 SYSTEM V2.00.473
 Humidity: 65.0%
 Test Distance: 9.401m [K=1.0000]
 Remarks:

LUMINOUS DISTRIBUTION INTENSITY DATA

Test:U:230.32V I:0.0784A P:10.513W PF:0.5823 Freq:50.00Hz Lamp Flux:504.403x1 lm		
NAME:	TYPE:	WEIGHT:
SPEC.: 3000K	DIM.:	SERIAL No.:
MFR.: EVERFINE	SUR.:	Shielding Angle:

Table--1

UNIT: cd

C (DEG) \ γ (DEG)	0	15	30	45	60	75	90	105	120	135	150	165	180	195	210	225	240	255	270
0	0.64	0.64	0.64	0.64	0.64	0.64	0.64	0.64	0.64	0.64	0.64	0.64	0.64	0.64	0.64	0.64	0.64	0.64	0.64
5	0.64	0.62	0.63	0.64	0.61	0.64	0.61	0.64	0.61	0.64	0.63	0.61	0.62	0.63	0.64	0.65	0.66	0.65	0.68
10	0.64	0.60	0.63	0.64	0.63	0.67	0.64	0.66	0.65	0.64	0.60	0.59	0.60	0.63	0.64	0.66	0.72	0.75	0.78
15	0.64	0.58	0.62	0.66	0.68	0.99	0.93	0.97	0.75	0.66	0.60	0.60	0.57	0.62	0.64	0.71	0.81	0.98	1.07
20	0.64	0.56	0.62	0.89	1.24	1.73	1.63	1.72	1.25	0.90	0.62	0.60	0.53	0.59	0.64	0.80	1.30	1.79	1.89
25	0.64	0.54	0.64	1.26	1.70	2.20	2.03	2.20	1.75	1.36	0.69	0.60	0.51	0.56	0.65	1.19	1.89	2.42	2.46
30	0.63	0.53	0.80	1.52	1.87	2.35	2.21	2.38	1.92	1.68	0.94	0.63	0.49	0.54	0.78	1.50	2.16	2.69	2.70
35	0.62	0.52	0.90	1.57	1.99	2.89	2.62	2.79	2.09	1.76	1.11	0.67	0.46	0.51	0.80	1.61	2.44	3.56	3.31
40	0.59	0.52	0.91	1.61	2.98	4.18	3.53	3.92	3.22	1.83	1.13	0.67	0.45	0.49	0.80	1.67	3.29	4.29	3.93
45	0.56	0.52	0.90	1.99	4.90	32.1	34.4	32.7	5.04	2.82	1.12	0.67	0.42	0.48	0.76	2.11	3.66	23.4	32.1
50	0.52	0.50	0.89	2.50	36.6	71.4	71.8	72.5	39.6	3.88	1.11	0.63	0.40	0.47	0.72	2.39	30.1	63.9	69.4
55	0.50	0.48	0.87	5.79	69.2	110	112	112	74.9	30.4	1.11	0.58	0.38	0.45	0.68	6.07	61.8	103	109
60	0.46	0.46	0.84	12.2	97.6	145	149	148	106	57.2	1.11	0.54	0.35	0.43	0.64	13.6	95.2	144	142
65	0.45	0.45	0.81	18.9	132	186	185	190	143	83.7	1.11	0.50	0.34	0.39	0.61	20.8	132	184	184
70	0.42	0.44	0.78	28.4	155	202	196	206	168	107	1.07	0.47	0.32	0.37	0.59	30.3	157	204	197
75	0.35	0.39	0.72	32.0	162	211	204	215	175	121	1.00	0.43	0.30	0.35	0.58	36.0	164	213	207
80	0.32	0.38	0.66	32.5	169	220	213	225	183	125	0.90	0.40	0.29	0.32	0.58	39.9	171	222	215
85	0.32	0.38	0.64	33.3	173	224	217	229	187	129	0.82	0.36	0.29	0.31	0.59	43.7	175	227	219
90	0.32	0.41	0.66	33.8	172	223	216	227	185	129	0.81	0.40	0.33	0.33	0.61	46.9	175	225	218
95	0.35	0.48	0.76	33.5	168	219	212	223	181	125	0.94	0.49	0.40	0.39	0.71	50.3	170	220	213
100	0.35	0.54	0.84	25.8	161	211	204	215	175	92.4	1.10	0.58	0.40	0.42	0.79	40.1	164	213	206
105	0.36	0.63	0.96	1.69	80.4	109	112	113	86.4	2.05	1.16	0.69	0.40	0.48	0.90	1.73	87.0	115	127
110	0.43	0.74	1.16	1.21	74.0	69.3	3.48	70.1	74.4	31.4	1.35	0.78	0.40	0.56	0.93	1.33	65.4	70.3	3.59
115	0.45	0.97	1.32	1.41	140	106	85.0	107	139	43.6	1.34	0.76	0.42	0.60	1.07	1.43	129	104	3.58
120	0.57	1.00	1.35	1.76	129	173	168	176	139	44.3	1.34	0.84	0.36	0.65	1.23	2.04	132	175	30.4
125	0.32	0.80	1.42	1.64	115	155	151	158	125	13.1	1.55	0.87	0.22	0.56	1.16	2.11	118	157	144
130	0.24	0.54	1.09	1.16	66.8	121	124	126	76.3	1.96	1.22	0.73	0.21	0.52	0.93	1.22	75.7	128	136
135	0.22	0.36	0.98	0.84	18.7	64.3	68.5	67.0	28.4	0.89	1.02	0.48	0.21	0.44	0.80	0.79	2.67	60.7	78.3
140	0.26	0.32	0.54	1.88	2.43	4.07	16.7	9.71	2.60	1.38	0.68	0.42	0.21	0.29	0.44	1.93	0.68	16.1	25.5
145	0.35	0.78	0.73	0.37	1.00	2.87	2.84	3.84	1.44	0.66	1.16	2.45	0.44	0.43	0.98	0.70	0.74	2.42	2.46
150	0.26	0.17	0.40	0.32	0.52	2.30	2.53	2.43	0.58	0.31	0.42	2.45	0.39	0.22	0.37	0.34	0.56	2.19	2.65
155	0.43	0.16	0.23	0.46	0.30	0.66	0.90	0.69	0.28	0.29	0.21	1.05	0.22	0.19	0.19	0.26	0.19	0.86	0.88
160	0.53	0.22	0.21	0.67	0.35	0.21	0.26	0.19	0.68	8.20	1.33	0.49	0.18	0.17	0.17	0.19	0.09	0.23	0.52
165	0.27	0.12	0.20	1.05	0.10	0.15	0.46	0.22	0.09	0.19	0.17	0.14	0.16	0.16	0.15	0.18	0.01	0.14	0.52
170	0.13	0.06	0.10	0.00	0.01	0.00	0.00	0.00	0.01	0.00	0.09	0.07	0.12	0.16	0.10	0.16	0.00	0.01	0.00
175	0.09	0.05	0.05	0.00	0.00	0.00	0.00	0.00	0.00	0.00	0.06	0.06	0.09	0.12	0.06	0.09	0.00	0.00	0.00
180	0.08	0.07	0.04	0.02	0.00	0.00	0.00	0.00	0.00	0.00	0.05	0.06	0.09	0.07	0.05	0.03	0.00	0.00	0.00

C Range: 0 - 360DEG
 C Interval: 15.0DEG
 Test Speed: HIGH
 Temperature:25.3°C
 Operators:DAMIN
 Test Date:2024-09-26

γ Range: 0 - 180DEG
 γ Interval: 1.0DEG
 Test System:EVERFINE GO-2000B_V1 SYSTEM V2.00.473
 Humidity:65.0%
 Test Distance:9.401m [K=1.0000]
 Remarks:

LUMINOUS DISTRIBUTION INTENSITY DATA

Test:U:230.32V I:0.0784A P:10.513W PF:0.5823 Freq:50.00Hz Lamp Flux:504.403x1 lm		
NAME:	TYPE:	WEIGHT:
SPEC.: 3000K	DIM.:	SERIAL No.:
MFR.: EVERFINE	SUR.:	Shielding Angle:

Table--2

UNIT: cd

C (DEG) \ γ (DEG)	285	300	315	330	345														
0	0.64	0.64	0.64	0.64	0.64														
5	0.67	0.68	0.64	0.65	0.64														
10	0.80	0.79	0.71	0.66	0.64														
15	1.04	0.88	0.74	0.68	0.64														
20	1.92	1.50	0.93	0.70	0.65														
25	2.55	2.12	1.44	0.78	0.65														
30	2.77	2.40	1.84	0.99	0.65														
35	3.79	2.73	2.00	1.08	0.65														
40	4.34	3.78	2.24	1.10	0.65														
45	25.3	4.42	2.83	1.06	0.65														
50	66.5	34.7	3.20	1.02	0.65														
55	106	69.7	19.7	0.99	0.65														
60	147	104	39.2	0.96	0.63														
65	189	142	62.7	0.92	0.61														
70	209	169	83.1	0.91	0.60														
75	218	177	97.6	0.88	0.59														
80	226	185	102	0.86	0.58														
85	230	188	105	0.85	0.57														
90	228	186	104	0.84	0.59														
95	223	182	101	0.96	0.66														
100	216	176	81.4	1.06	0.72														
105	117	89.5	2.15	1.15	0.75														
110	66.5	69.3	2.77	1.26	0.87														
115	3.82	131	5.99	1.48	1.08														
120	2.63	140	5.46	1.40	1.04														
125	2.01	126	3.19	1.42	0.83														
130	37.0	81.7	1.60	1.06	0.69														
135	23.2	1.73	0.64	0.80	0.51														
140	14.0	0.73	1.01	0.43	0.34														
145	2.83	0.92	0.62	0.71	1.91														
150	2.67	0.58	0.32	0.40	0.32														
155	0.87	0.25	0.24	0.24	0.25														
160	0.28	0.14	0.41	0.87	0.21														
165	0.09	0.01	0.13	0.14	0.19														
170	0.02	0.00	0.07	0.09	0.17														
175	0.00	0.00	0.01	0.04	0.14														
180	0.00	0.00	0.00	0.02	0.10														

C Range: 0 - 360DEG
 C Interval: 15.0DEG
 Test Speed: HIGH
 Temperature:25.3°C
 Operators:DAMIN
 Test Date:2024-09-26

γ Range: 0 - 180DEG
 γ Interval: 1.0DEG
 Test System:EVERFINE GO-2000B_V1 SYSTEM V2.00.473
 Humidity:65.0%
 Test Distance:9.401m [K=1.0000]
 Remarks: