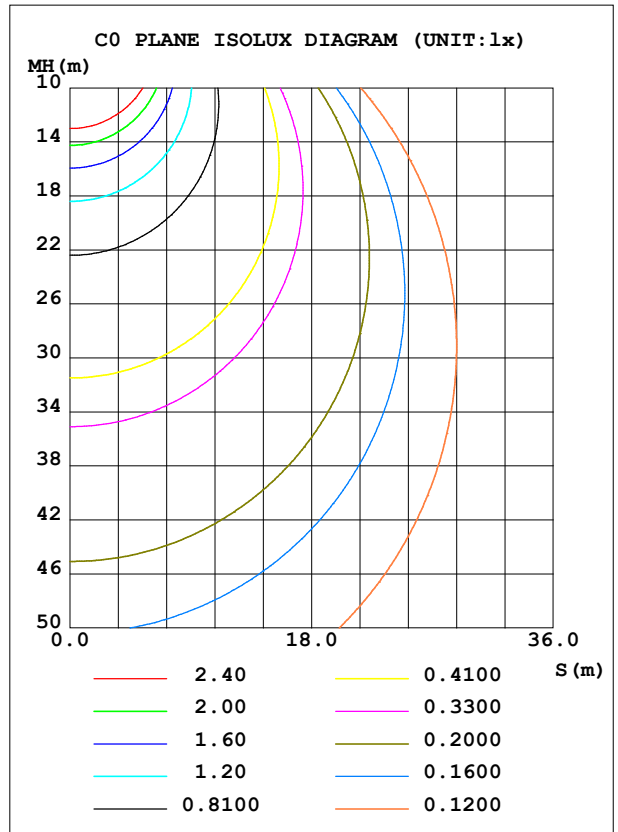
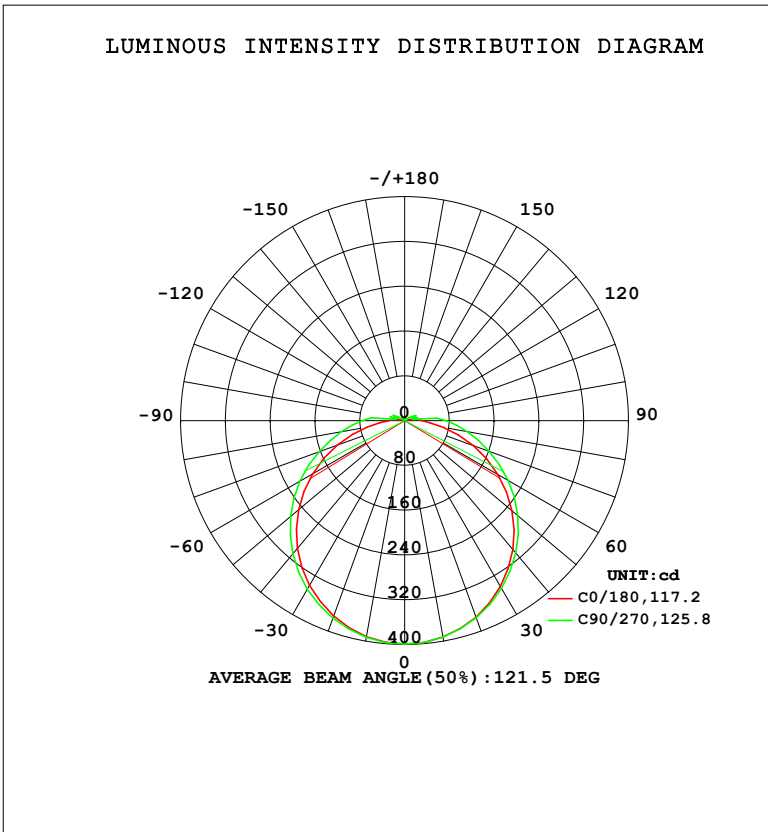


LUMINAIRE PHOTOMETRIC TEST REPORT

Test:U:220.32V I:0.0566A P:12.021W PF:0.9643 Freq:50.00Hz Lamp Flux:1398.3x1 lm		
NAME: 明装	TYPE:	WEIGHT:
SPEC.:	DIM.:	SERIAL No.:
MFR.: EVERFINE	SUR.: 156.5mm	Shielding Angle:

DATA OF LAMP		PHOTOMETRIC DATA			
MODEL	O2	Imax (cd)	398.9	S/MH (C0/180)	1.27
NOMINAL POWER (W)	12	LOR (%)	100.0	S/MH (C90/270)	1.30
RATED VOLTAGE (V)	220	TOTAL FLUX (lm)	1398.3	η UP, DN (C0-180)	2.7,47.3
NOMINAL FLUX (lm)	1398.3	CIE CLASS	DIRECT	η UP, DN (C180-360)	2.7,47.3
LAMPS INSIDE	1	η up (%)	5.3	CIBSE SHR NOM	1.50
TEST VOLTAGE (V)	219.5	η down (%)	94.7	CIBSE SHR MAX	1.50



C Range: 0 - 360DEG
 C Interval: 22.5DEG
 Test Speed: HIGH
 Temperature: 25.3°C
 Operators: DAMIN
 Test Date: 2023-11-16

γ Range: 0 - 180DEG
 γ Interval: 5.0DEG
 Test System: EVERFINE GO-2000B_V1 SYSTEM V2.00.473
 Humidity: 65.0%
 Test Distance: 9.401m [K=1.0000]
 Remarks:

ZONAL FLUX DIAGRAM

ZONAL FLUX DIAGRAM:

γ	C0	C45	C90	C135	C180	C225	C270	C315	γ	Φ zone	Φ total	%lum,lamp
10	392.7	392.4	392.6	392.2	391.7	391.7	393.0	393.3	0- 10	37.77	37.77	2.7,2.7
20	373.4	373.8	374.5	372.7	371.4	372.5	375.4	374.9	10- 20	108.6	146.3	10.5,10.5
30	342.3	344.3	346.2	342.3	340.0	344.3	347.8	345.7	20- 30	166.1	312.4	22.3,22.3
40	300.7	304.9	308.7	302.5	298.1	305.0	310.9	307.1	30- 40	203.8	516.2	36.9,36.9
50	250.1	257.8	263.9	254.8	247.3	257.8	266.1	259.8	40- 50	217.5	733.8	52.5,52.5
60	192.5	205.4	213.5	202.0	189.8	205.0	215.8	207.0	50- 60	206.8	940.5	67.3,67.3
70	130.9	150.4	160.7	147.0	127.7	149.2	162.8	150.9	60- 70	174.1	1115	79.7,79.7
80	70.65	99.02	113.4	95.66	68.33	97.86	114.8	99.18	70- 80	127.8	1242	88.9,88.9
90	31.80	60.23	74.76	57.20	29.11	58.51	75.99	60.15	80- 90	81.54	1324	94.7,94.7
100	17.31	23.83	14.11	12.14	14.29	13.11	15.50	24.15	90-100	41.28	1365	97.6,97.6
110	6.387	13.58	14.29	12.72	2.076	14.33	12.01	11.19	100-110	12.81	1378	98.6,98.6
120	3.569	2.856	15.17	2.513	4.652	3.709	15.92	2.653	110-120	9.571	1388	99.2,99.2
130	2.646	2.382	2.641	2.417	2.848	2.562	3.166	2.527	120-130	4.126	1392	99.5,99.5
140	2.660	2.646	2.733	2.684	2.814	2.754	2.854	2.721	130-140	2.015	1394	99.7,99.7
150	2.873	2.916	3.017	2.933	3.004	3.006	3.066	2.982	140-150	1.781	1396	99.8,99.8
160	3.169	3.216	3.277	3.213	3.252	3.246	3.278	3.244	150-160	1.431	1397	99.9,99.9
170	3.447	3.468	3.471	3.450	3.500	3.474	3.513	3.480	160-170	0.9493	1398	100,100
180	3.630	3.648	3.610	3.638	3.648	3.660	3.610	3.638	170-180	0.3388	1398	100,100
DEG	LUMINOUS INTENSITY:cd									UNIT:lm		

Conical surface Flux(90deg): 624.81 lm

%lum = 44.7%

%lamp = 44.7%

Conical surface Flux(130deg): 1032.8 lm

%lum = 73.9%

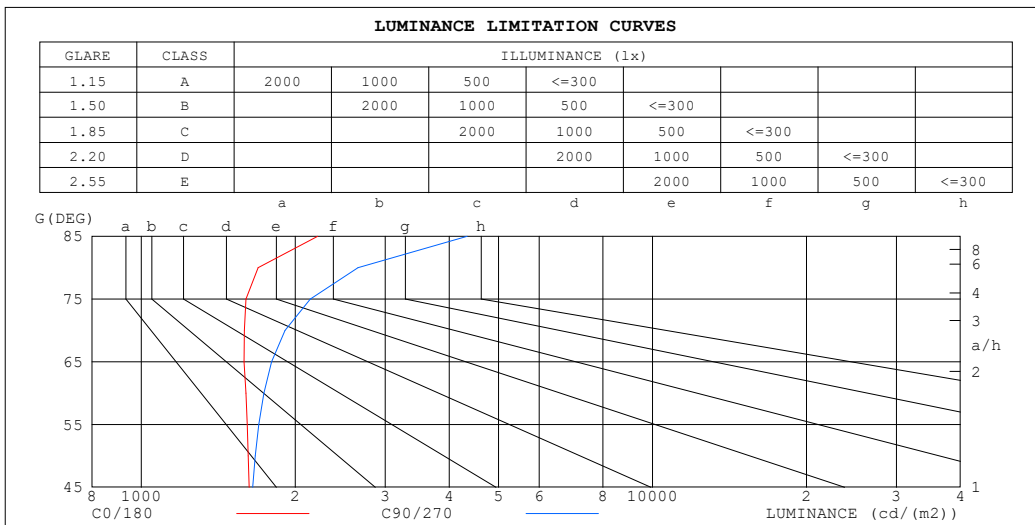
%lamp = 73.9%

C Range: 0 - 360DEG
 C Interval: 22.5DEG
 Test Speed: HIGH
 Temperature:25.3°C
 Operators:DAMIN
 Test Date:2023-11-16

γ Range: 0 - 180DEG
 γ Interval: 5.0DEG
 Test System:EVERFINE GO-2000B_V1 SYSTEM V2.00.473
 Humidity:65.0%
 Test Distance:9.401m [K=1.0000]
 Remarks:

LUMINANCE LIMITATION CURVES

Test:U:220.32V I:0.0566A P:12.021W PF:0.9643 Freq:50.00Hz Lamp Flux:1398.3x1 lm		
NAME: 明装	TYPE:	WEIGHT:
SPEC.:	DIM.:	SERIAL No.:
MFR.: EVERFINE	SUR.: 156.5mm	Shielding Angle:



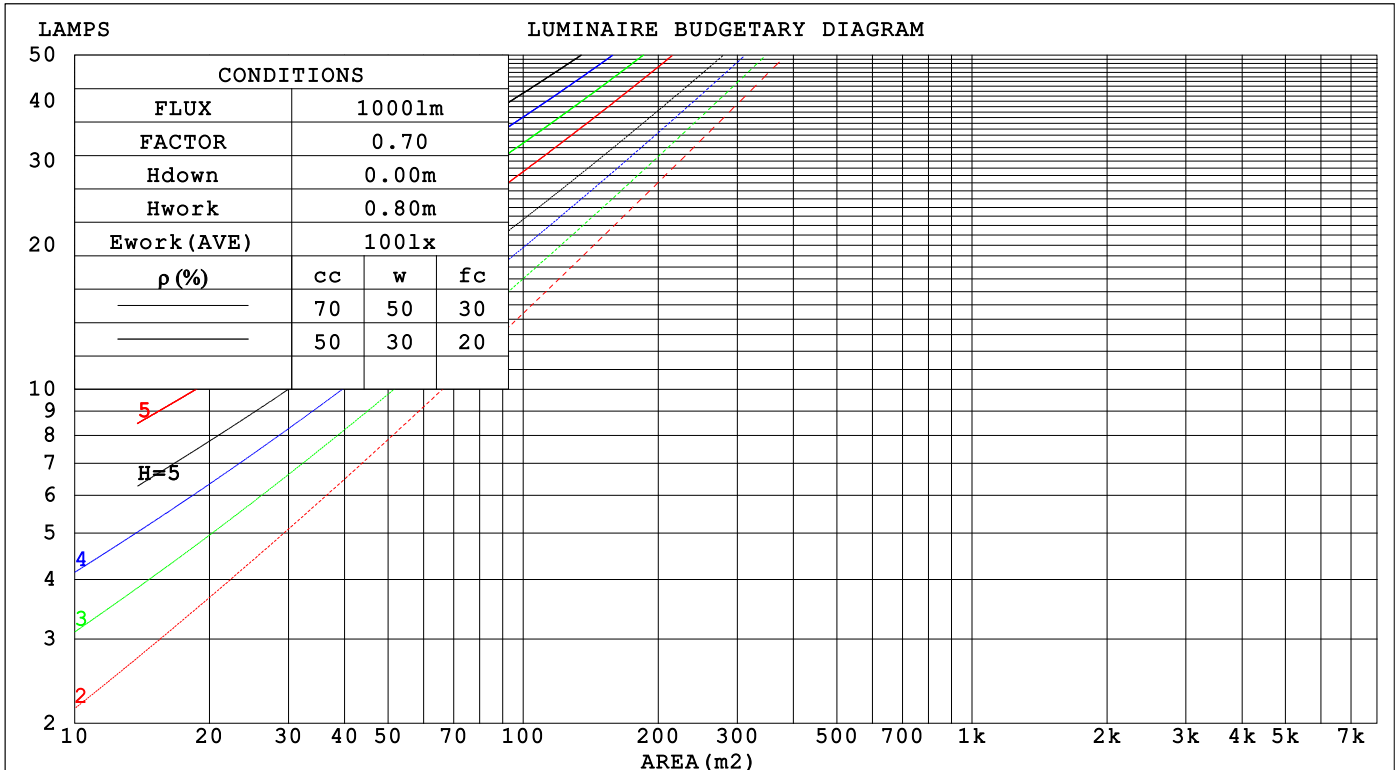
C Range: 0 - 360DEG
 C Interval: 22.5DEG
 Test Speed: HIGH
 Temperature:25.3°C
 Operators:DAMIN
 Test Date:2023-11-16

γ Range: 0 - 180DEG
 γ Interval: 5.0DEG
 Test System:EVERFINE GO-2000B_V1 SYSTEM V2.00.473
 Humidity:65.0%
 Test Distance:9.401m [K=1.0000]
 Remarks:

CU AND LUMINAIRE BUDGETARY ESTIMATE DIAGRAM

Test:U:220.32V I:0.0566A P:12.021W PF:0.9643 Freq:50.00Hz Lamp Flux:1398.3x1 lm		
NAME: 明装	TYPE:	WEIGHT:
SPEC.:	DIM.:	SERIAL No.:
MFR.: EVERFINE	SUR.: 156.5mm	Shielding Angle:

ρcc	80%			70%			50%			30%			10%			0
ρw	50%	30%	10%	50%	30%	10%	50%	30%	10%	50%	30%	10%	50%	30%	10%	0
ρfc	20%			20%			20%			20%			20%			0
RCR	RCR:Room Cavity Ratio															
	Coefficients of Utilization(CU)															
0.0	1.18	1.18	1.18	1.14	1.14	1.14	1.08	1.08	1.08	1.02	1.02	1.02	.97	.97	.97	.95
1.0	.00	.95	.90	.97	.92	.88	.92	.88	.84	.87	.84	.81	.82	.80	.77	.75
2.0	.86	.78	.72	.83	.76	.71	.79	.73	.68	.75	.70	.66	.71	.67	.63	.61
3.0	.75	.66	.59	.73	.65	.58	.69	.62	.56	.65	.59	.55	.62	.57	.53	.50
4.0	.66	.56	.49	.64	.55	.49	.61	.53	.47	.58	.51	.46	.55	.50	.45	.42
5.0	.59	.49	.42	.57	.48	.42	.54	.47	.41	.52	.45	.40	.49	.44	.39	.36
6.0	.53	.43	.37	.51	.43	.36	.49	.41	.35	.47	.40	.35	.45	.39	.34	.32
7.0	.48	.38	.32	.46	.38	.32	.44	.37	.31	.42	.36	.31	.41	.35	.30	.28
8.0	.43	.35	.28	.42	.34	.28	.41	.33	.28	.39	.32	.27	.37	.31	.27	.25
9.0	.40	.31	.26	.39	.31	.25	.37	.30	.25	.36	.29	.24	.34	.28	.24	.22
10.0	.37	.28	.23	.36	.28	.23	.34	.27	.23	.33	.27	.22	.32	.26	.22	.20



C Range: 0 - 360DEG
 C Interval: 22.5DEG
 Test Speed: HIGH
 Temperature:25.3°C
 Operators:DAMIN
 Test Date:2023-11-16

γ Range: 0 - 180DEG
 γ Interval: 5.0DEG
 Test System:EVERFINE GO-2000B_V1 SYSTEM V2.00.473
 Humidity:65.0%
 Test Distance:9.401m [K=1.0000]
 Remarks:

WEC AND CCEC

Test:U:220.32V I:0.0566A P:12.021W PF:0.9643 Freq:50.00Hz								
Lamp Flux:1398.3x1 lm								
NAME: 明装			TYPE:			WEIGHT:		
SPEC.:			DIM.:			SERIAL No.:		
MFR.: EVERFINE			SUR.: 156.5mm			Shielding Angle:		

ρ _{CC}	80%			70%			50%			30%			10%			0
ρ _w	50%	30%	10%	50%	30%	10%	50%	30%	10%	50%	30%	10%	50%	30%	10%	0
ρ _{fc}	20%			20%			20%			20%			20%			0
RCR	RCR:Room Cavity Ratio						Wall Exitance Coefficients(WEC)									
0.0																
1.0	.364	.207	.066	.356	.203	.064	.339	.195	.062	.324	.187	.060	.310	.180	.058	
2.0	.324	.177	.054	.316	.174	.054	.301	.167	.052	.287	.161	.050	.275	.155	.049	
3.0	.291	.155	.046	.284	.152	.046	.271	.147	.045	.259	.142	.043	.247	.137	.042	
4.0	.264	.137	.040	.258	.135	.040	.246	.130	.039	.235	.126	.038	.225	.122	.037	
5.0	.241	.123	.036	.236	.121	.035	.225	.117	.035	.215	.114	.034	.206	.110	.033	
6.0	.222	.111	.032	.217	.110	.032	.207	.106	.031	.198	.103	.030	.190	.100	.030	
7.0	.205	.101	.029	.201	.100	.028	.192	.097	.028	.184	.094	.027	.176	.092	.027	
8.0	.191	.093	.026	.187	.092	.026	.179	.089	.026	.172	.087	.025	.165	.085	.025	
9.0	.178	.086	.024	.174	.085	.024	.167	.083	.023	.161	.081	.023	.154	.078	.023	
10.0	.167	.080	.022	.163	.079	.022	.157	.077	.022	.151	.075	.021	.145	.073	.021	

ρ _{CC}	80%			70%			50%			30%			10%			0
ρ _w	50%	30%	10%	50%	30%	10%	50%	30%	10%	50%	30%	10%	50%	30%	10%	0
ρ _{fc}	20%			20%			20%			20%			20%			0
RCR	RCR:Room Cavity Ratio						Ceiling Cavity Exitance Coefficients(CCEC)									
0.0	.231	.231	.231	.197	.197	.197	.135	.135	.135	.077	.077	.077	.025	.025	.025	
1.0	.225	.196	.171	.192	.169	.147	.132	.116	.102	.076	.067	.059	.024	.022	.019	
2.0	.218	.173	.135	.186	.149	.117	.128	.103	.082	.074	.060	.048	.024	.019	.016	
3.0	.210	.156	.113	.180	.134	.098	.124	.093	.068	.071	.055	.040	.023	.018	.013	
4.0	.202	.143	.098	.173	.123	.085	.119	.086	.060	.069	.050	.035	.022	.016	.012	
5.0	.194	.133	.087	.167	.115	.076	.115	.080	.054	.067	.047	.032	.021	.015	.010	
6.0	.187	.124	.080	.161	.108	.069	.111	.075	.049	.064	.044	.029	.021	.015	.010	
7.0	.180	.118	.074	.155	.102	.065	.107	.072	.046	.062	.042	.027	.020	.014	.009	
8.0	.173	.112	.070	.149	.097	.061	.103	.068	.043	.060	.040	.026	.019	.013	.009	
9.0	.167	.107	.067	.144	.093	.058	.099	.065	.041	.058	.039	.025	.019	.013	.008	
10.0	.161	.103	.064	.139	.089	.056	.096	.063	.040	.056	.037	.024	.018	.012	.008	

C Range: 0 - 360DEG
 C Interval: 22.5DEG
 Test Speed: HIGH
 Temperature:25.3°C
 Operators:DAMIN
 Test Date:2023-11-16

γ Range: 0 - 180DEG
 γ Interval: 5.0DEG
 Test System:EVERFINE GO-2000B_V1 SYSTEM V2.00.473
 Humidity:65.0%
 Test Distance:9.401m [K=1.0000]
 Remarks:

UGR(Unified Glare Rating) Table

Test:U:220.32V I:0.0566A P:12.021W PF:0.9643 Freq:50.00Hz										
Lamp Flux:1398.3x1 lm										
NAME: 明装					TYPE:			WEIGHT:		
SPEC.:					DIM.:			SERIAL No.:		
MFR.: EVERFINE					SUR.: 156.5mm			Shielding Angle:		
ceiling/cavity	0.7	0.7	0.5	0.5	0.3	0.7	0.7	0.5	0.5	0.3
walls	0.5	0.3	0.5	0.3	0.3	0.5	0.3	0.5	0.3	0.3
working plane	0.2	0.2	0.2	0.2	0.2	0.2	0.2	0.2	0.2	0.2
Room dimensions	Viewed crosswise					Viewed endwise				
x = 2H y = 2H	13.0	14.5	13.4	14.8	15.1	13.3	14.8	13.7	15.1	15.5
3H	14.8	16.2	15.1	16.5	16.9	15.4	16.8	15.7	17.1	17.5
4H	15.6	16.9	16.0	17.3	17.6	16.4	17.8	16.8	18.1	18.5
6H	16.2	17.5	16.6	17.9	18.3	17.5	18.8	17.9	19.2	19.6
8H	16.5	17.7	16.9	18.1	18.5	18.1	19.3	18.5	19.7	20.1
12H	16.8	18.0	17.2	18.4	18.8	18.8	20.0	19.2	20.4	20.8
4H 2H	13.8	15.1	14.1	15.4	15.8	14.0	15.3	14.4	15.7	16.1
3H	15.7	16.9	16.2	17.3	17.7	16.3	17.4	16.7	17.8	18.3
4H	16.7	17.8	17.1	18.2	18.6	17.5	18.6	17.9	19.0	19.4
6H	17.5	18.5	18.0	19.0	19.5	18.8	19.8	19.3	20.2	20.7
8H	17.9	18.8	18.4	19.3	19.8	19.5	20.4	20.0	20.9	21.4
12H	18.3	19.1	18.8	19.6	20.2	20.3	21.1	20.8	21.6	22.2
8H 4H	17.2	18.1	17.7	18.6	19.1	17.9	18.8	18.4	19.3	19.8
6H	18.3	19.1	18.8	19.6	20.1	19.4	20.2	20.0	20.7	21.3
8H	18.9	19.6	19.4	20.1	20.6	20.3	21.0	20.9	21.6	22.1
12H	19.5	20.1	20.0	20.6	21.2	21.4	22.0	22.0	22.5	23.1
12H 4H	17.3	18.2	17.8	18.6	19.2	17.9	18.8	18.4	19.3	19.8
6H	18.6	19.2	19.1	19.8	20.3	19.6	20.3	20.1	20.8	21.4
8H	19.2	19.8	19.8	20.4	21.0	20.6	21.2	21.1	21.7	22.3
Variations with the observer position at spacings(CIE Pub.117):										
S = 1.0H	+ 0.1 / - 0.1					+ 0.1 / - 0.1				
1.5H	+ 0.2 / - 0.3					+ 0.2 / - 0.3				
2.0H	+ 0.2 / - 0.3					+ 0.2 / - 0.3				

CIE Pub.117, 1398 lm Total Lamp Luminous Flux Correct (8log(F/F0) = 1.2)
 Area: 0.245 m2

C Range: 0 - 360DEG
 C Interval: 22.5DEG
 Test Speed: HIGH
 Temperature:25.3°C
 Operators:DAMIN
 Test Date:2023-11-16

γ Range: 0 - 180DEG
 γ Interval: 5.0DEG
 Test System:EVERFINE GO-2000B_V1 SYSTEM V2.00.473
 Humidity:65.0%
 Test Distance:9.401m [K=1.0000]
 Remarks:

UTILIZATION FACTORS TABLE

Test:U:220.32V I:0.0566A P:12.021W PF:0.9643 Freq:50.00Hz Lamp Flux:1398.3x1 lm		
NAME: 明装	TYPE:	WEIGHT:
SPEC.:	DIM.:	SERIAL No.:
MFR.: EVERFINE	SUR.: 156.5mm	Shielding Angle:

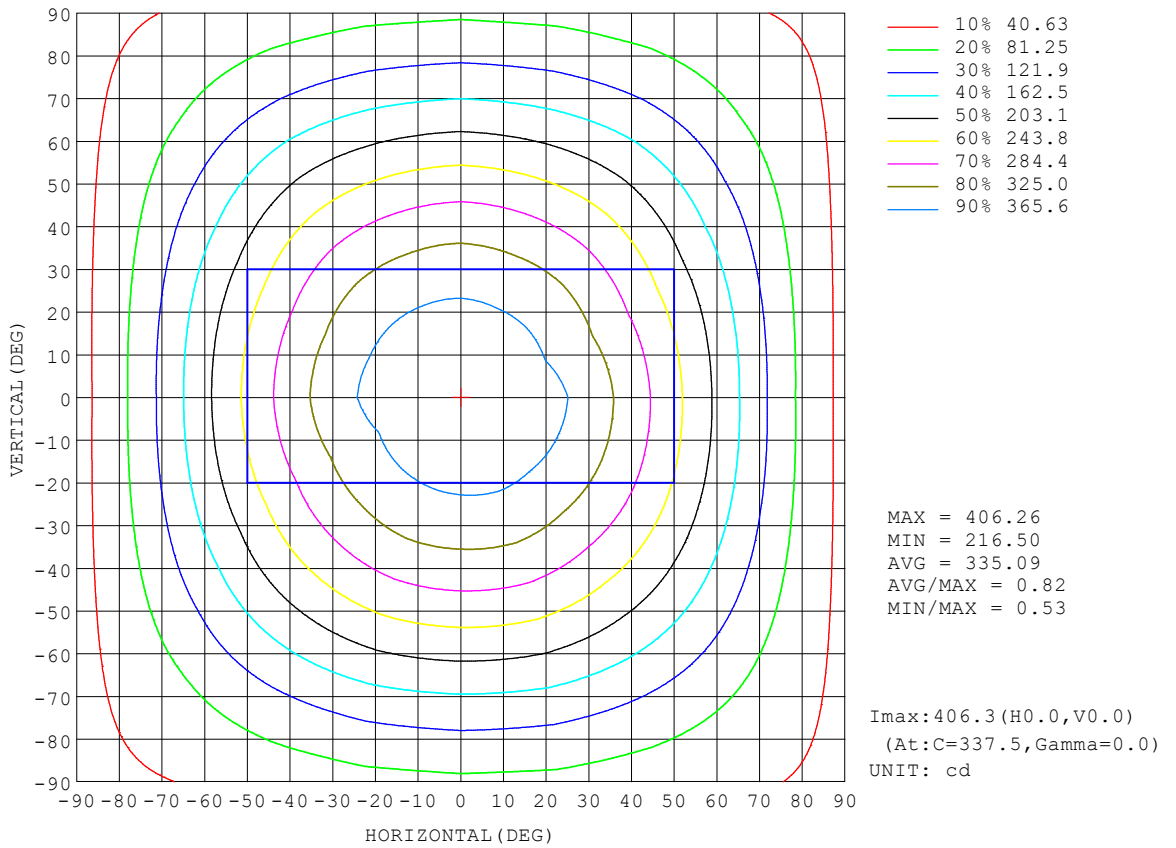
REFLECTANCE										
Ceiling	0.8	0.8	0.8	0.7	0.7	0.7	0.5	0.5	0.5	0
Walls	0.7	0.5	0.3	0.7	0.5	0.3	0.7	0.5	0.3	0
Working plane	0.2	0.2	0.2	0.2	0.2	0.2	0.2	0.2	0.2	0
ROOM INDEX	UTILIZATION FACTORS (PERCENT) $k(RI) \times RCR = 5$									
k = 0.60	53	41	34	52	41	33	51	40	33	27
0.80	63	50	42	61	50	42	59	49	42	34
1.00	71	58	50	69	58	50	67	59	49	42
1.25	78	66	58	76	65	57	73	63	56	48
1.50	83	71	63	81	70	63	77	68	62	53
2.00	90	80	72	88	78	71	83	76	69	60
2.50	94	85	78	91	83	76	87	80	74	64
3.00	98	89	83	95	87	81	90	84	79	69
4.00	102	95	89	99	93	87	94	89	84	74
5.00	105	99	93	102	96	92	96	92	88	77
ROOM INDEX	UF(total)									Direct
According to DIN EN 13032-2 2004			Suspended				SHRNOM = 1.25			

C Range: 0 - 360DEG
 C Interval: 22.5DEG
 Test Speed: HIGH
 Temperature:25.3°C
 Operators:DAMIN
 Test Date:2023-11-16

γ Range: 0 - 180DEG
 γ Interval: 5.0DEG
 Test System:EVERFINE GO-2000B_V1 SYSTEM V2.00.473
 Humidity:65.0%
 Test Distance:9.401m [K=1.0000]
 Remarks:

ISOCANDELA DIAGRAM

Test:U:220.32V I:0.0566A P:12.021W PF:0.9643 Freq:50.00Hz Lamp Flux:1398.3x1 lm		
NAME: 明装	TYPE:	WEIGHT:
SPEC.:	DIM.:	SERIAL No.:
MFR.: EVERFINE	SUR.: 156.5mm	Shielding Angle:

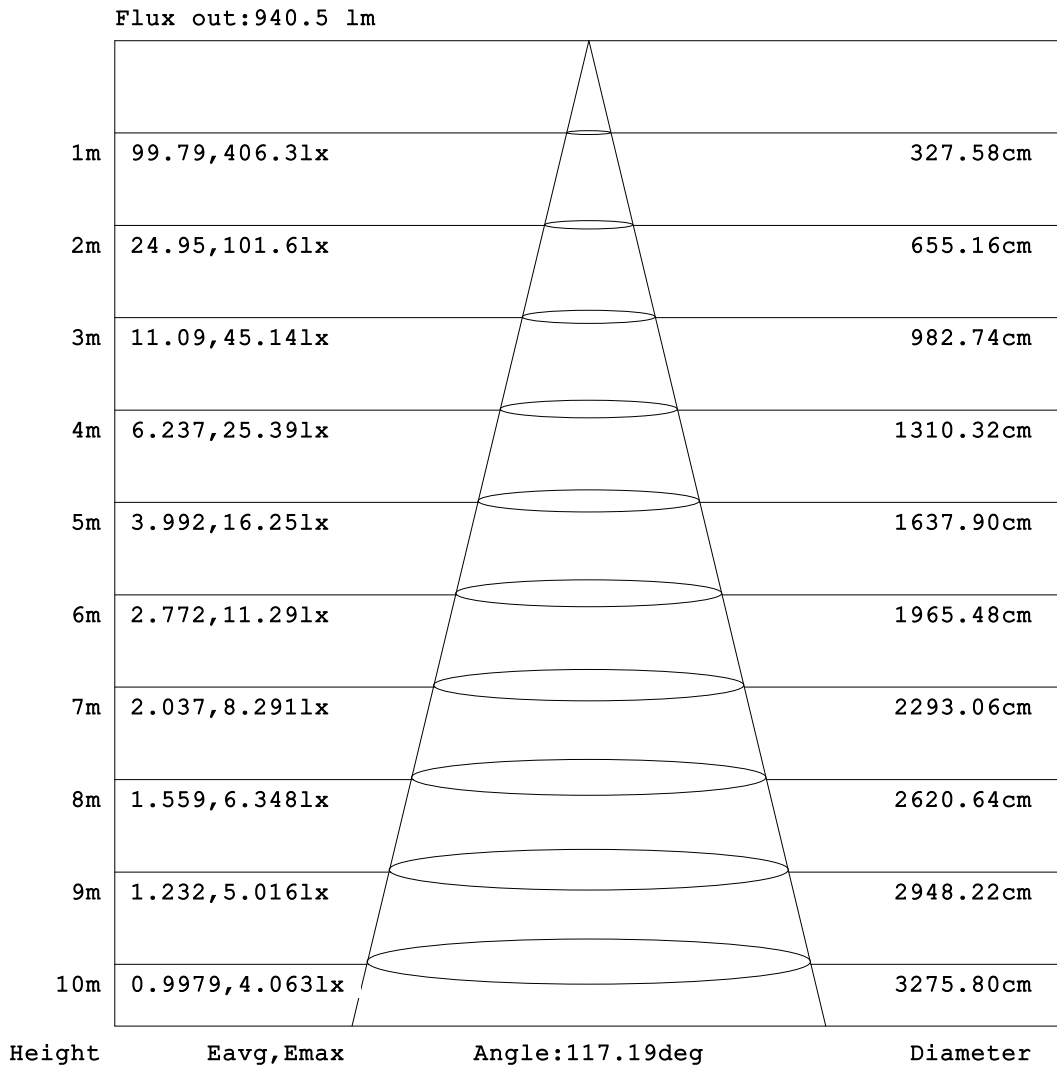


C Range: 0 - 360DEG
 C Interval: 22.5DEG
 Test Speed: HIGH
 Temperature: 25.3°C
 Operators: DAMIN
 Test Date: 2023-11-16

γ Range: 0 - 180DEG
 γ Interval: 5.0DEG
 Test System: EVERFINE GO-2000B_V1 SYSTEM V2.00.473
 Humidity: 65.0%
 Test Distance: 9.401m [K=1.0000]
 Remarks:

AAI Figure

Test:U:220.32V I:0.0566A P:12.021W PF:0.9643 Freq:50.00Hz Lamp Flux:1398.3x1 lm		
NAME: 明装	TYPE:	WEIGHT:
SPEC.:	DIM.:	SERIAL No.:
MFR.: EVERFINE	SUR.: 156.5mm	Shielding Angle:



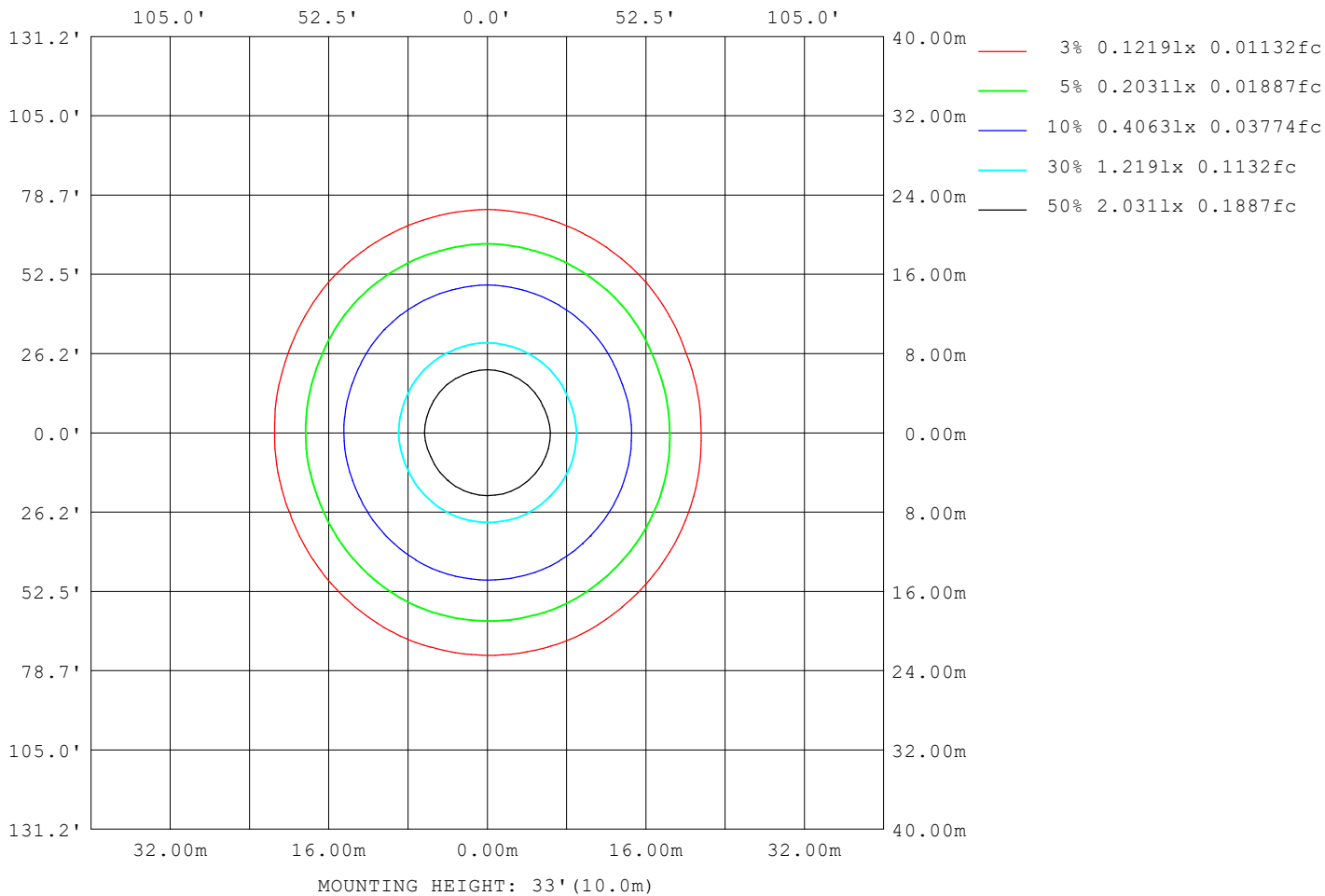
Note: The Curves indicate the illuminated area and the average illumination when the luminaire is at different distance.

C Range: 0 - 360DEG
C Interval: 22.5DEG
Test Speed: HIGH
Temperature: 25.3°C
Operators: DAMIN
Test Date: 2023-11-16

γ Range: 0 - 180DEG
γ Interval: 5.0DEG
Test System: EVERFINE GO-2000B_V1 SYSTEM V2.00.473
Humidity: 65.0%
Test Distance: 9.401m [K=1.0000]
Remarks:

ISOLUX DIAGRAM

Test:U:220.32V I:0.0566A P:12.021W PF:0.9643 Freq:50.00Hz Lamp Flux:1398.3x1 lm		
NAME: 明装	TYPE:	WEIGHT:
SPEC.:	DIM.:	SERIAL No.:
MFR.: EVERFINE	SUR.: 156.5mm	Shielding Angle:



C Range: 0 - 360DEG
 C Interval: 22.5DEG
 Test Speed: HIGH
 Temperature:25.3°C
 Operators:DAMIN
 Test Date:2023-11-16

γ Range: 0 - 180DEG
 γ Interval: 5.0DEG
 Test System:EVERFINE GO-2000B_V1 SYSTEM V2.00.473
 Humidity:65.0%
 Test Distance:9.401m [K=1.0000]
 Remarks:

LED Avg.L Report

Test:U:220.32V I:0.0566A P:12.021W PF:0.9643 Freq:50.00Hz Lamp Flux:1398.3x1 lm		
NAME: 明装	TYPE:	WEIGHT:
SPEC.:	DIM.:	SERIAL No.:
MFR.: EVERFINE	SUR.: 156.5mm	Shielding Angle:

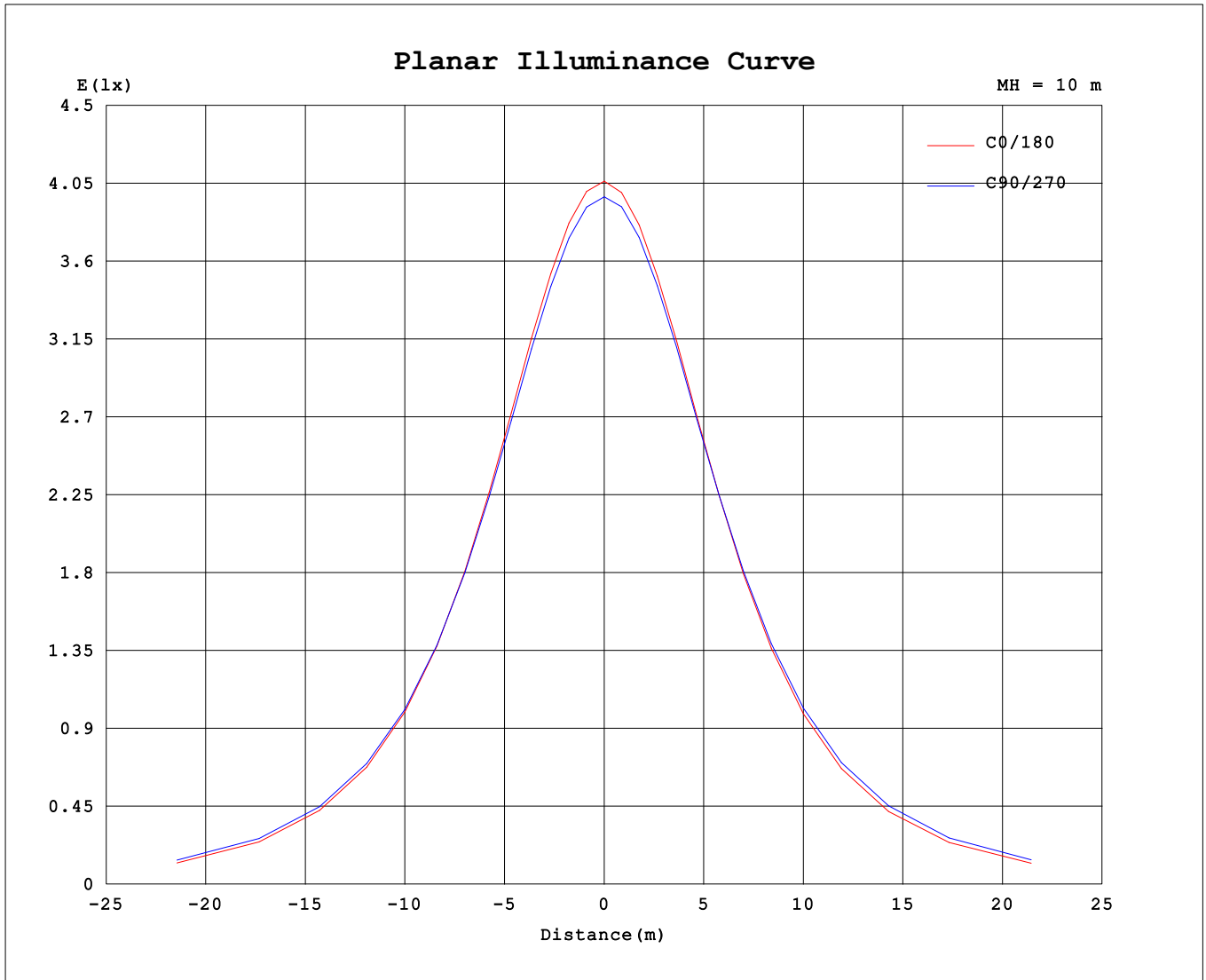
AvgL	cd/m2
L_0~180 (65) av	1548
L_0~180 (75) av	1551
L_0~180 (85) av	2114
L_90~270 (65) av	1817
L_90~270 (75) av	2161
L_90~270 (85) av	4385
L_45 (65) av	1709
L_45 (75) av	1930
L_45 (85) av	3600

Standard: GB/T 29293-2012

C Range: 0 - 360DEG
 C Interval: 22.5DEG
 Test Speed: HIGH
 Temperature:25.3℃
 Operators:DAMIN
 Test Date:2023-11-16

γ Range: 0 - 180DEG
 γ Interval: 5.0DEG
 Test System:EVERFINE GO-2000B_V1 SYSTEM V2.00.473
 Humidity:65.0%
 Test Distance:9.401m [K=1.0000]
 Remarks:

Planar Illuminance Curve



C Range: 0 - 360DEG
 C Interval: 22.5DEG
 Test Speed: HIGH
 Temperature: 25.3°C
 Operators: DAMIN
 Test Date: 2023-11-16

γ Range: 0 - 180DEG
 γ Interval: 5.0DEG
 Test System: EVERFINE GO-2000B_V1 SYSTEM V2.00.473
 Humidity: 65.0%
 Test Distance: 9.401m [K=1.0000]
 Remarks:

LUMINOUS DISTRIBUTION INTENSITY DATA

Test:U:220.32V I:0.0566A P:12.021W PF:0.9643 Freq:50.00Hz Lamp Flux:1398.3x1 lm		
NAME: 明装	TYPE:	WEIGHT:
SPEC.:	DIM.:	SERIAL No.:
MFR.: EVERFINE	SUR.: 156.5mm	Shielding Angle:

Table--1

UNIT: cd

C (DEG) \ γ (DEG)	0	22.5	45	67.5	90	112.5	135	157.5	180	202.5	225	247.5	270	292.5	315	337.5			
0	399	399	399	399	399	399	399	399	399	399	399	399	399	399	399	399			
5	398	398	398	398	398	397	397	397	397	397	397	397	398	398	398	398			
10	393	393	392	393	393	392	392	392	392	392	392	393	393	393	393	393			
15	385	385	384	386	385	385	384	383	383	383	384	385	385	385	386	385			
20	373	374	374	375	374	374	373	372	371	372	373	374	375	375	375	374			
25	359	360	360	362	362	361	359	357	357	357	360	361	362	362	361	360			
30	342	344	344	347	346	345	342	341	340	340	344	346	348	347	346	343			
35	323	325	326	330	329	328	323	322	320	321	326	327	331	329	328	324			
40	301	304	305	310	309	308	302	300	298	299	305	307	311	309	307	302			
45	277	281	282	288	287	286	279	276	274	275	282	285	289	287	284	278			
50	250	255	258	264	264	262	255	250	247	249	258	262	266	263	260	253			
55	222	228	232	239	239	237	229	223	219	222	232	237	242	238	234	225			
60	193	199	205	213	214	211	202	194	190	194	205	211	216	212	207	197			
65	162	170	178	187	187	184	174	165	159	164	177	184	189	185	179	167			
70	131	140	150	160	161	157	147	135	128	136	149	158	163	159	151	138			
75	99.8	111	123	134	136	132	120	107	97.0	107	122	133	138	134	124	109			
80	70.7	84.7	99.0	111	113	109	95.7	80.4	68.3	81.0	97.9	110	115	110	99.2	82.7			
85	46.4	62.0	78.0	90.0	93.0	88.0	74.7	57.7	43.9	58.7	76.8	89.1	94.3	89.8	77.9	60.0			
90	31.8	44.8	60.2	71.8	74.8	70.0	57.2	40.8	29.1	42.0	58.5	70.9	76.0	71.5	60.1	43.3			
95	25.3	33.0	38.3	52.6	57.2	50.5	33.0	29.3	23.0	30.0	32.3	52.7	60.1	52.6	39.5	32.0			
100	17.3	18.6	23.8	12.0	14.1	11.8	12.1	8.97	14.3	8.79	13.1	12.3	15.5	11.3	24.1	18.5			
105	10.4	4.70	9.80	16.1	24.0	14.4	9.66	2.55	3.09	3.32	7.29	16.6	27.0	15.8	10.2	4.39			
110	6.39	1.82	13.6	21.6	14.3	22.5	12.7	1.78	2.08	1.95	14.3	20.5	12.0	21.5	11.2	1.99			
115	1.86	1.89	8.11	19.0	22.2	18.4	7.32	2.03	2.06	2.12	8.62	19.3	23.0	18.6	7.43	2.03			
120	3.57	2.16	2.86	12.2	15.2	11.9	2.51	2.28	4.65	2.25	3.71	12.7	15.9	12.1	2.65	2.40			
125	3.89	2.25	2.24	6.50	9.10	6.21	2.30	2.34	3.91	2.35	2.41	7.11	9.74	6.39	2.38	2.37			
130	2.65	2.30	2.38	2.37	2.64	2.41	2.42	2.36	2.85	2.44	2.56	2.52	3.17	2.48	2.53	2.42			
135	2.44	2.47	2.53	2.54	2.59	2.54	2.55	2.49	2.62	2.59	2.70	2.67	2.70	2.64	2.65	2.57			
140	2.66	2.63	2.65	2.70	2.73	2.68	2.68	2.67	2.81	2.74	2.75	2.80	2.85	2.79	2.72	2.71			
145	2.74	2.74	2.77	2.83	2.88	2.83	2.81	2.76	2.89	2.84	2.86	2.90	2.98	2.90	2.84	2.81			
150	2.87	2.88	2.92	2.96	3.02	2.95	2.93	2.90	3.00	2.96	3.01	3.01	3.07	3.00	2.98	2.95			
155	3.01	3.04	3.05	3.11	3.16	3.10	3.07	3.06	3.12	3.11	3.12	3.13	3.17	3.13	3.09	3.08			
160	3.17	3.21	3.22	3.24	3.28	3.22	3.21	3.21	3.25	3.25	3.25	3.22	3.28	3.25	3.24	3.25			
165	3.33	3.35	3.34	3.37	3.39	3.35	3.33	3.35	3.40	3.39	3.36	3.36	3.40	3.37	3.35	3.37			
170	3.45	3.46	3.47	3.49	3.47	3.45	3.45	3.46	3.50	3.49	3.47	3.47	3.51	3.50	3.48	3.47			
175	3.59	3.63	3.61	3.59	3.55	3.55	3.56	3.58	3.63	3.61	3.58	3.54	3.54	3.58	3.61	3.60			
180	3.63	3.65	3.65	3.62	3.61	3.62	3.64	3.62	3.65	3.62	3.66	3.62	3.61	3.61	3.64	3.61			

C Range: 0 - 360DEG
 C Interval: 22.5DEG
 Test Speed: HIGH
 Temperature:25.3℃
 Operators:DAMIN
 Test Date:2023-11-16

γ Range: 0 - 180DEG
 γ Interval: 5.0DEG
 Test System:EVERFINE GO-2000B_V1 SYSTEM V2.00.473
 Humidity:65.0%
 Test Distance:9.401m [K=1.0000]
 Remarks: