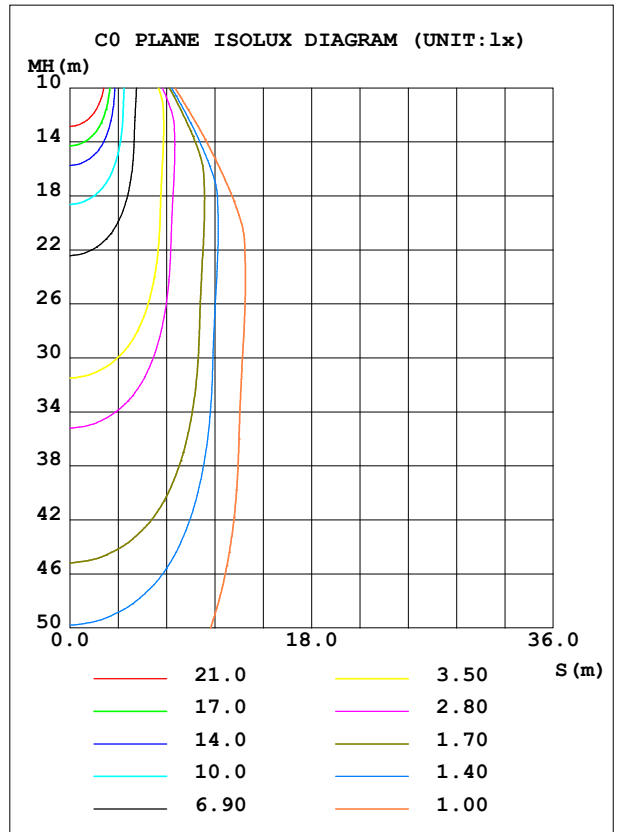
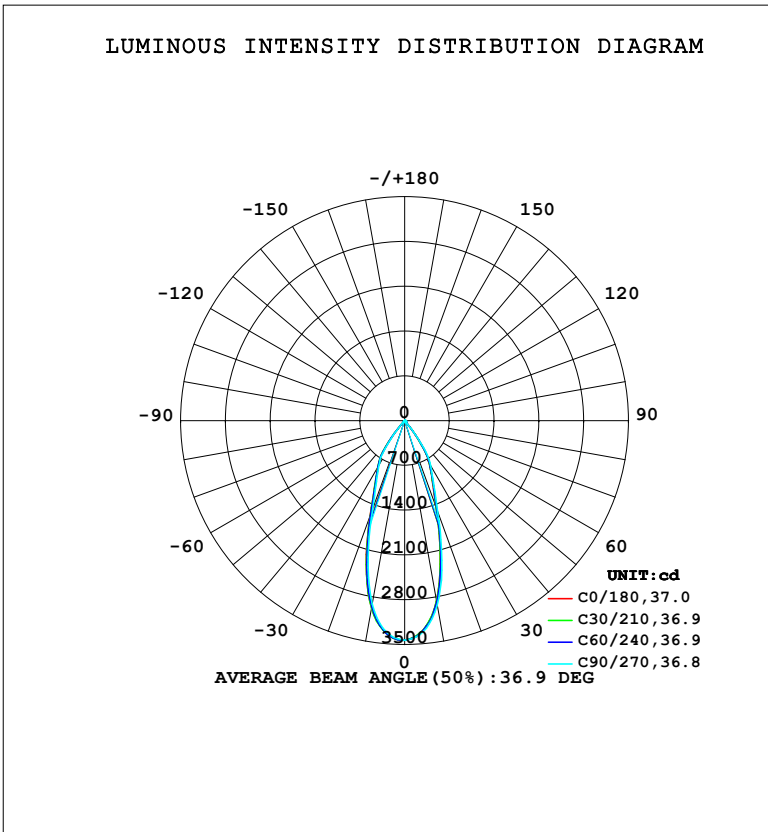


LUMINAIRE PHOTOMETRIC TEST REPORT

Test:U:220.32V I:0.0971A P:20.605W PF:0.9628 Freq:50.00Hz Lamp Flux:1775.65x1 lm		
NAME:	TYPE:	WEIGHT:
SPEC.:	DIM.:	SERIAL No.:
MFR.: EVERFINE	SUR.:	Shielding Angle:

DATA OF LAMP		PHOTOMETRIC DATA				Eff: 86.18 lm/W
MODEL	HYD-L01-D	I _{max} (cd)	3438	S/MH (C0/180)	0.63	
NOMINAL POWER (W)	20	LOR (%)	100.0	S/MH (C90/270)	0.60	
RATED VOLTAGE (V)	220	TOTAL FLUX (lm)	1775.6	η UP, DN (C0-180)	0.0, 50.3	
NOMINAL FLUX (lm)	1775.65	CIE CLASS	DIRECT	η UP, DN (C180-360)	0.0, 49.7	
LAMPS INSIDE	1	η up (%)	0.0	CIBSE SHR NOM	0.50	
TEST VOLTAGE (V)	219.5	η down (%)	100.0	CIBSE SHR MAX	0.55	



C Range: 0 - 360DEG
 C Interval: 15.0DEG
 Test Speed: HIGH
 Temperature: 25.3°C
 Operators: DAMIN
 Test Date: 2024-07-24

γ Range: 0 - 90DEG
 γ Interval: 1.0DEG
 Test System: EVERFINE GO-2000B_V1 SYSTEM V2.00.473
 Humidity: 65.0%
 Test Distance: 9.401m [K=1.0000]
 Remarks:

ZONAL FLUX DIAGRAM

ZONAL FLUX DIAGRAM:

γ	C0	C45	C90	C135	C180	C225	C270	C315	γ	Φ zone	Φ total	%lum,lamp
10	2871	2884	2936	3025	2980	2969	2918	2827	0- 10	304.1	304.1	17.1,17.1
20	1436	1463	1517	1634	1581	1559	1475	1388	10- 20	610.7	914.8	51.5,51.5
30	777.3	786.6	811.5	846.6	832.7	833.5	806.6	769.6	20- 30	497.1	1412	79.5,79.5
40	75.50	74.95	104.8	177.4	168.2	177.3	133.5	77.38	30- 40	306.2	1718	96.8,96.8
50	22.15	22.20	22.74	23.93	23.54	23.73	23.05	22.11	40- 50	31.04	1749	98.5,98.5
60	10.39	10.37	10.89	12.13	11.82	12.06	11.54	10.28	50- 60	15.34	1765	99.4,99.4
70	3.959	3.855	3.940	4.195	4.453	4.746	4.453	4.048	60- 70	6.863	1771	99.8,99.8
80	1.973	1.841	1.957	2.242	2.412	2.817	2.474	2.065	70- 80	3.536	1775	100,100
90	0	0	0	0	0	0	0	0	80- 90	0.6462	1776	100,100
100									90-100			
110									100-110			
120									110-120			
130									120-130			
140									130-140			
150									140-150			
160									150-160			
170									160-170			
180									170-180			
DEG	LUMINOUS INTENSITY:cd									UNIT:lm		

Conical surface Flux(90deg): 1738.5 lm

%lum = 97.9%

%lamp = 97.9%

Conical surface Flux(130deg): 1768.8 lm

%lum = 99.6%

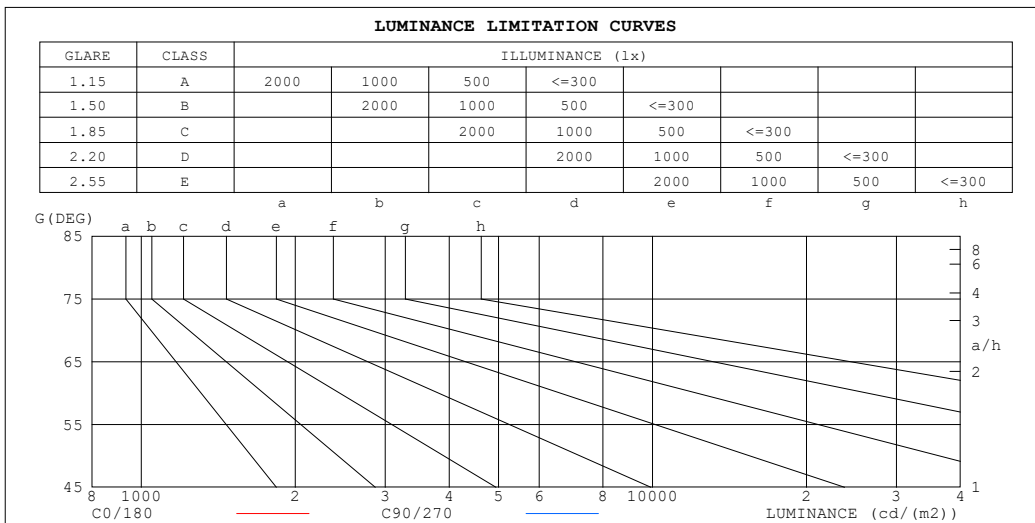
%lamp = 99.6%

C Range: 0 - 360DEG
 C Interval: 15.0DEG
 Test Speed: HIGH
 Temperature:25.3°C
 Operators:DAMIN
 Test Date:2024-07-24

γ Range: 0 - 90DEG
 γ Interval: 1.0DEG
 Test System:EVERFINE GO-2000B_V1 SYSTEM V2.00.473
 Humidity:65.0%
 Test Distance:9.401m [K=1.0000]
 Remarks:

LUMINANCE LIMITATION CURVES

Test:U:220.32V I:0.0971A P:20.605W PF:0.9628 Freq:50.00Hz Lamp Flux:1775.65x1 lm		
NAME:	TYPE:	WEIGHT:
SPEC.:	DIM.:	SERIAL No.:
MFR.: EVERFINE	SUR.:	Shielding Angle:



LUMINANCE cd/(m2)		
G (DEG)	C0/180	C90/270
85	0	0
80	115	113
75	128	122
70	117	115
65	145	148
60	210	218
55	289	297
50	349	353
45	416	453

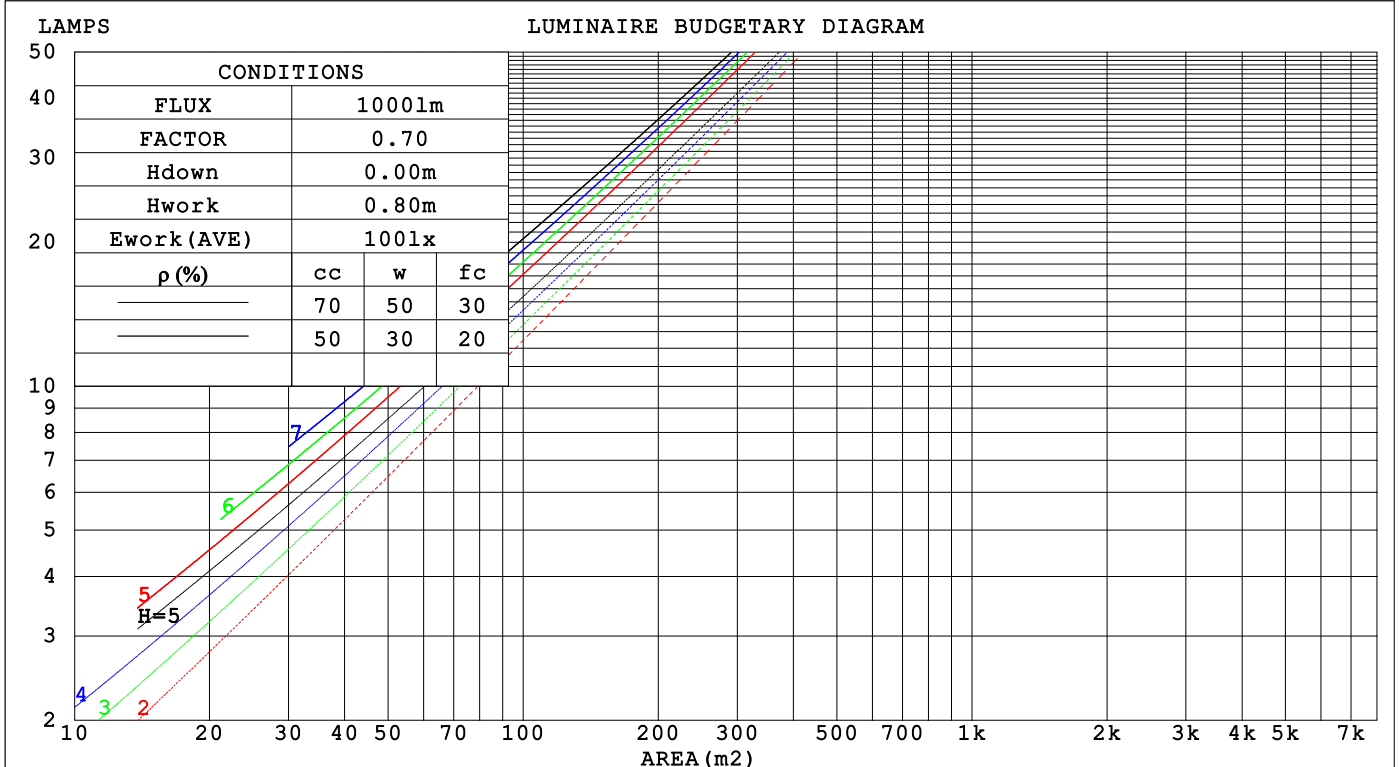
C Range: 0 - 360DEG
 C Interval: 15.0DEG
 Test Speed: HIGH
 Temperature: 25.3°C
 Operators: DAMIN
 Test Date: 2024-07-24

γ Range: 0 - 90DEG
 γ Interval: 1.0DEG
 Test System: EVERFINE GO-2000B_V1 SYSTEM V2.00.473
 Humidity: 65.0%
 Test Distance: 9.401m [K=1.0000]
 Remarks:

CU AND LUMINAIRE BUDGETARY ESTIMATE DIAGRAM

Test:U:220.32V I:0.0971A P:20.605W PF:0.9628 Freq:50.00Hz Lamp Flux:1775.65x1 lm		
NAME:	TYPE:	WEIGHT:
SPEC.:	DIM.:	SERIAL No.:
MFR.: EVERFINE	SUR.:	Shielding Angle:

ρ_{cc}	80%			70%			50%			30%			10%			0
ρ_w	50%	30%	10%	50%	30%	10%	50%	30%	10%	50%	30%	10%	50%	30%	10%	0
ρ_{fc}	20%			20%			20%			20%			20%			0
RCR	RCR:Room Cavity Ratio						Coefficients of Utilization(CU)									
0.0	1.19	1.19	1.19	1.16	1.16	1.16	1.11	1.11	1.11	1.06	1.06	1.06	1.02	1.02	1.02	1.00
1.0	1.11	1.09	1.07	1.09	1.07	1.05	1.05	1.04	1.02	1.02	1.00	.99	.98	.97	.96	.94
2.0	1.05	1.01	.98	1.03	.99	.97	.90	.97	.95	.97	.94	.93	.94	.92	.91	.89
3.0	.98	.94	.90	.97	.93	.89	.94	.91	.88	.92	.89	.87	.90	.87	.85	.84
4.0	.93	.88	.84	.92	.87	.83	.90	.86	.82	.88	.84	.82	.86	.83	.81	.79
5.0	.88	.82	.79	.87	.82	.78	.85	.81	.78	.83	.80	.77	.82	.79	.76	.75
6.0	.83	.78	.74	.82	.77	.74	.81	.76	.73	.80	.76	.73	.78	.75	.72	.71
7.0	.79	.74	.70	.78	.73	.70	.77	.73	.69	.76	.72	.69	.75	.71	.69	.67
8.0	.75	.70	.66	.75	.70	.66	.74	.69	.66	.73	.68	.65	.72	.68	.65	.64
9.0	.72	.66	.63	.71	.66	.63	.70	.66	.62	.69	.65	.62	.69	.65	.62	.61
10.0	.68	.63	.60	.68	.63	.60	.67	.63	.60	.67	.62	.59	.66	.62	.59	.58



C Range: 0 - 360DEG
 C Interval: 15.0DEG
 Test Speed: HIGH
 Temperature:25.3°C
 Operators:DAMIN
 Test Date:2024-07-24

γ Range: 0 - 90DEG
 γ Interval: 1.0DEG
 Test System:EVERFINE GO-2000B_V1 SYSTEM V2.00.473
 Humidity:65.0%
 Test Distance:9.401m [K=1.0000]
 Remarks:

WEC AND CCEC

Test:U:220.32V I:0.0971A P:20.605W PF:0.9628 Freq:50.00Hz								
Lamp Flux:1775.65x1 lm								
NAME:			TYPE:			WEIGHT:		
SPEC.:			DIM.:			SERIAL No.:		
MFR.: EVERFINE			SUR.:			Shielding Angle:		

ρ_{CC}	80%			70%			50%			30%			10%			0
ρ_w	50%	30%	10%	50%	30%	10%	50%	30%	10%	50%	30%	10%	50%	30%	10%	0
ρ_{fc}	20%			20%			20%			20%			20%			0
RCR	RCR:Room Cavity Ratio						Wall Exitance Coefficients (WEC)									
0.0																
1.0	.165	.094	.030	.158	.090	.029	.146	.084	.027	.134	.078	.025	.124	.072	.023	
2.0	.157	.086	.026	.151	.083	.026	.141	.078	.024	.131	.073	.023	.122	.069	.022	
3.0	.148	.079	.024	.144	.077	.023	.135	.073	.022	.127	.069	.021	.119	.066	.020	
4.0	.141	.073	.022	.137	.072	.021	.129	.069	.020	.122	.066	.020	.116	.063	.019	
5.0	.134	.068	.020	.131	.067	.020	.124	.065	.019	.118	.062	.018	.112	.060	.018	
6.0	.128	.064	.018	.125	.063	.018	.119	.061	.018	.114	.059	.017	.108	.057	.017	
7.0	.122	.060	.017	.119	.059	.017	.114	.058	.017	.109	.056	.016	.105	.055	.016	
8.0	.117	.057	.016	.114	.056	.016	.110	.055	.016	.106	.054	.015	.102	.052	.015	
9.0	.112	.054	.015	.110	.054	.015	.106	.052	.015	.102	.051	.015	.098	.050	.014	
10.0	.107	.052	.014	.106	.051	.014	.102	.050	.014	.098	.049	.014	.095	.048	.014	

ρ_{CC}	80%			70%			50%			30%			10%			0
ρ_w	50%	30%	10%	50%	30%	10%	50%	30%	10%	50%	30%	10%	50%	30%	10%	0
ρ_{fc}	20%			20%			20%			20%			20%			0
RCR	RCR:Room Cavity Ratio						Ceiling Cavity Exitance Coefficients (CCEC)									
0.0	.190	.190	.190	.163	.163	.163	.111	.111	.111	.064	.064	.064	.020	.020	.020	
1.0	.170	.157	.146	.146	.135	.125	.100	.093	.087	.057	.054	.050	.018	.017	.016	
2.0	.154	.133	.114	.132	.114	.099	.091	.079	.069	.052	.046	.040	.017	.015	.013	
3.0	.141	.113	.091	.121	.098	.079	.083	.068	.056	.048	.040	.033	.015	.013	.011	
4.0	.130	.099	.074	.112	.085	.065	.077	.059	.046	.044	.035	.027	.014	.011	.009	
5.0	.121	.087	.062	.104	.075	.054	.072	.052	.038	.041	.031	.022	.013	.010	.007	
6.0	.113	.077	.052	.097	.067	.045	.067	.047	.032	.039	.028	.019	.013	.009	.006	
7.0	.106	.070	.044	.092	.060	.038	.063	.042	.027	.037	.025	.016	.012	.008	.005	
8.0	.101	.063	.037	.087	.055	.033	.060	.038	.023	.035	.023	.014	.011	.007	.005	
9.0	.095	.058	.033	.082	.050	.028	.057	.035	.020	.033	.021	.012	.011	.007	.004	
10.0	.091	.053	.029	.078	.046	.025	.054	.033	.018	.032	.019	.011	.010	.006	.003	

C Range: 0 - 360DEG
 C Interval: 15.0DEG
 Test Speed: HIGH
 Temperature:25.3°C
 Operators:DAMIN
 Test Date:2024-07-24

γ Range: 0 - 90DEG
 γ Interval: 1.0DEG
 Test System:EVERFINE GO-2000B_V1 SYSTEM V2.00.473
 Humidity:65.0%
 Test Distance:9.401m [K=1.0000]
 Remarks:

UGR(Unified Glare Rating) Table

Test:U:220.32V I:0.0971A P:20.605W PF:0.9628 Freq:50.00Hz										
Lamp Flux:1775.65x1 lm										
NAME:			TYPE:				WEIGHT:			
SPEC.:			DIM.:				SERIAL No.:			
MFR.: EVERFINE			SUR.:				Shielding Angle:			
ceiling/cavity	0.7	0.7	0.5	0.5	0.3	0.7	0.7	0.5	0.5	0.3
walls	0.5	0.3	0.5	0.3	0.3	0.5	0.3	0.5	0.3	0.3
working plane	0.2	0.2	0.2	0.2	0.2	0.2	0.2	0.2	0.2	0.2
Room dimensions	Viewed crosswise					Viewed endwise				
x = 2H y = 2H	6.3	7.1	6.5	7.3	7.4	6.6	7.4	6.8	7.6	7.8
3H	6.1	6.9	6.4	7.1	7.3	6.4	7.2	6.7	7.4	7.6
4H	6.1	6.8	6.3	7.0	7.2	6.4	7.1	6.6	7.3	7.6
6H	6.0	6.7	6.3	6.9	7.2	6.3	7.0	6.6	7.2	7.5
8H	6.0	6.6	6.3	6.9	7.1	6.3	6.9	6.6	7.2	7.4
12H	5.9	6.6	6.2	6.8	7.1	6.2	6.9	6.5	7.1	7.4
4H 2H	6.0	6.8	6.3	7.0	7.2	6.4	7.1	6.6	7.3	7.5
3H	5.9	6.5	6.2	6.8	7.1	6.2	6.9	6.5	7.1	7.4
4H	5.8	6.4	6.2	6.7	7.0	6.1	6.7	6.5	7.0	7.3
6H	5.8	6.3	6.1	6.6	7.0	6.1	6.6	6.5	6.9	7.3
8H	5.7	6.2	6.1	6.6	6.9	6.0	6.5	6.4	6.9	7.2
12H	5.7	6.1	6.1	6.5	6.9	6.0	6.4	6.4	6.8	7.2
8H 4H	5.7	6.2	6.1	6.5	6.9	6.0	6.5	6.4	6.8	7.2
6H	5.6	6.0	6.1	6.4	6.8	6.0	6.3	6.4	6.7	7.2
8H	5.6	5.9	6.0	6.4	6.8	5.9	6.3	6.4	6.7	7.1
12H	5.5	5.8	6.0	6.3	6.8	5.8	6.1	6.3	6.6	7.1
12H 4H	5.7	6.1	6.1	6.5	6.9	6.0	6.4	6.4	6.8	7.2
6H	5.6	5.9	6.0	6.4	6.8	5.9	6.2	6.3	6.7	7.1
8H	5.5	5.8	6.0	6.3	6.8	5.9	6.2	6.3	6.6	7.1
Variations with the observer position at spacings(CIE Pub.117):										
S = 1.0H	+ 4.7 / - 6.1					+ 4.8 / - 7.0				
1.5H	+ 7.2 / - 5.1					+ 7.4 / - 5.9				
2.0H	+ 1.4 / - 1.8					+ 1.6 / - 1.9				

CIE Pub.117, 1776 lm Total Lamp Luminous Flux Correct (8log(F/F0) = 2.0)
 Area: 0.1 m2

C Range: 0 - 360DEG
 C Interval: 15.0DEG
 Test Speed: HIGH
 Temperature:25.3°C
 Operators:DAMIN
 Test Date:2024-07-24

γ Range: 0 - 90DEG
 γ Interval: 1.0DEG
 Test System:EVERFINE GO-2000B_V1 SYSTEM V2.00.473
 Humidity:65.0%
 Test Distance:9.401m [K=1.0000]
 Remarks:

UTILIZATION FACTORS TABLE

Test:U:220.32V I:0.0971A P:20.605W PF:0.9628 Freq:50.00Hz Lamp Flux:1775.65x1 lm		
NAME:	TYPE:	WEIGHT:
SPEC.:	DIM.:	SERIAL No.:
MFR.: EVERFINE	SUR.:	Shielding Angle:

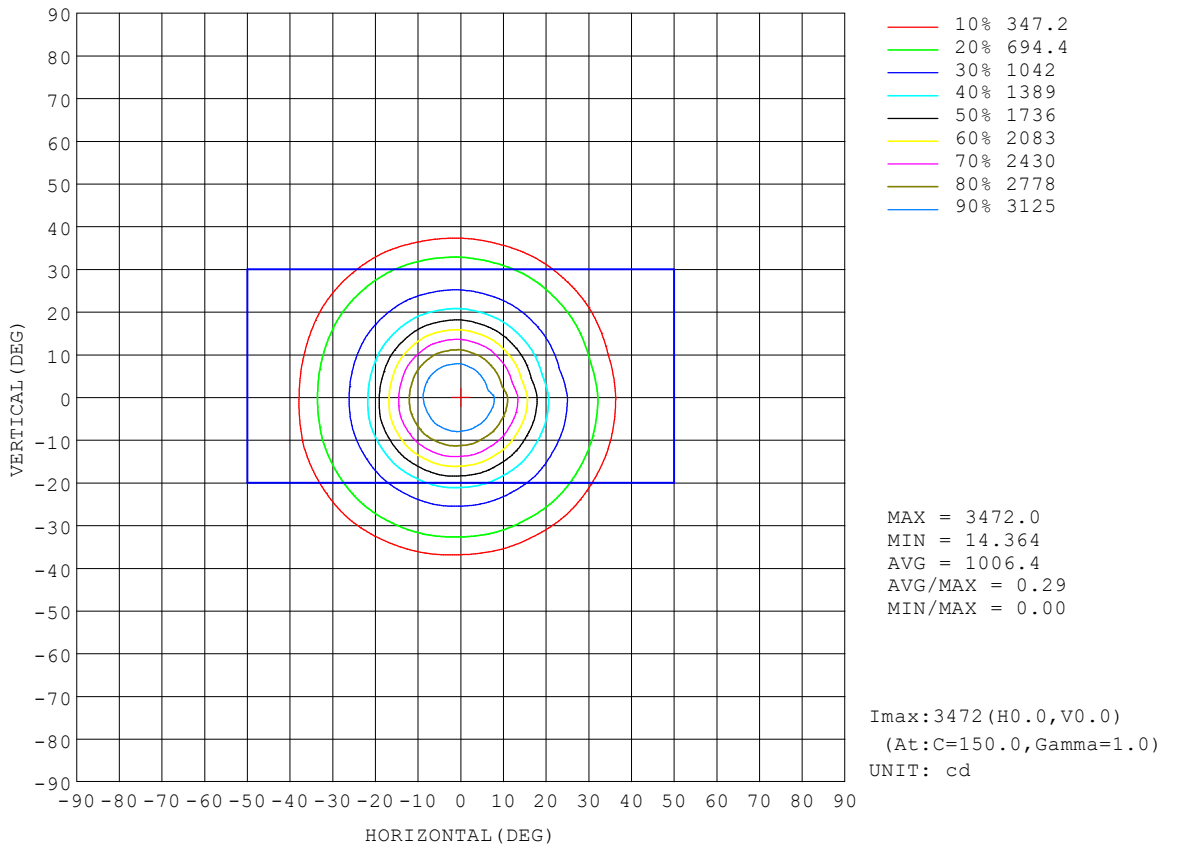
REFLECTANCE										
Ceiling	0.8	0.8	0.8	0.7	0.7	0.7	0.5	0.5	0.5	0
Walls	0.7	0.5	0.3	0.7	0.5	0.3	0.7	0.5	0.3	0
Working plane	0.2	0.2	0.2	0.2	0.2	0.2	0.2	0.2	0.2	0
ROOM INDEX	UTILIZATION FACTORS (PERCENT) $k(RI) \times RCR = 5$									
$k = 0.60$	90	84	80	89	83	80	88	83	80	76
0.80	97	91	88	96	91	88	95	90	87	84
1.00	101	95	92	100	95	92	98	95	91	88
1.25	104	100	96	103	99	96	101	98	95	91
1.50	107	102	99	106	102	99	104	100	98	94
2.00	109	105	102	108	104	102	105	102	100	95
2.50	111	107	104	109	106	104	106	104	102	96
3.00	112	109	107	111	108	105	107	105	103	97
4.00	114	112	110	112	110	108	109	107	105	98
5.00	115	113	112	113	112	110	109	108	107	99
ROOM INDEX	UF(total)									Direct
According to DIN EN 13032-2 2004			Suspended				SHRNOM = 1.25			

C Range: 0 - 360DEG
 C Interval: 15.0DEG
 Test Speed: HIGH
 Temperature:25.3°C
 Operators:DAMIN
 Test Date:2024-07-24

γ Range: 0 - 90DEG
 γ Interval: 1.0DEG
 Test System:EVERFINE GO-2000B_V1 SYSTEM V2.00.473
 Humidity:65.0%
 Test Distance:9.401m [K=1.0000]
 Remarks:

ISOCANDELA DIAGRAM

Test:U:220.32V I:0.0971A P:20.605W PF:0.9628 Freq:50.00Hz Lamp Flux:1775.65x1 lm		
NAME:	TYPE:	WEIGHT:
SPEC.:	DIM.:	SERIAL No.:
MFR.: EVERFINE	SUR.:	Shielding Angle:

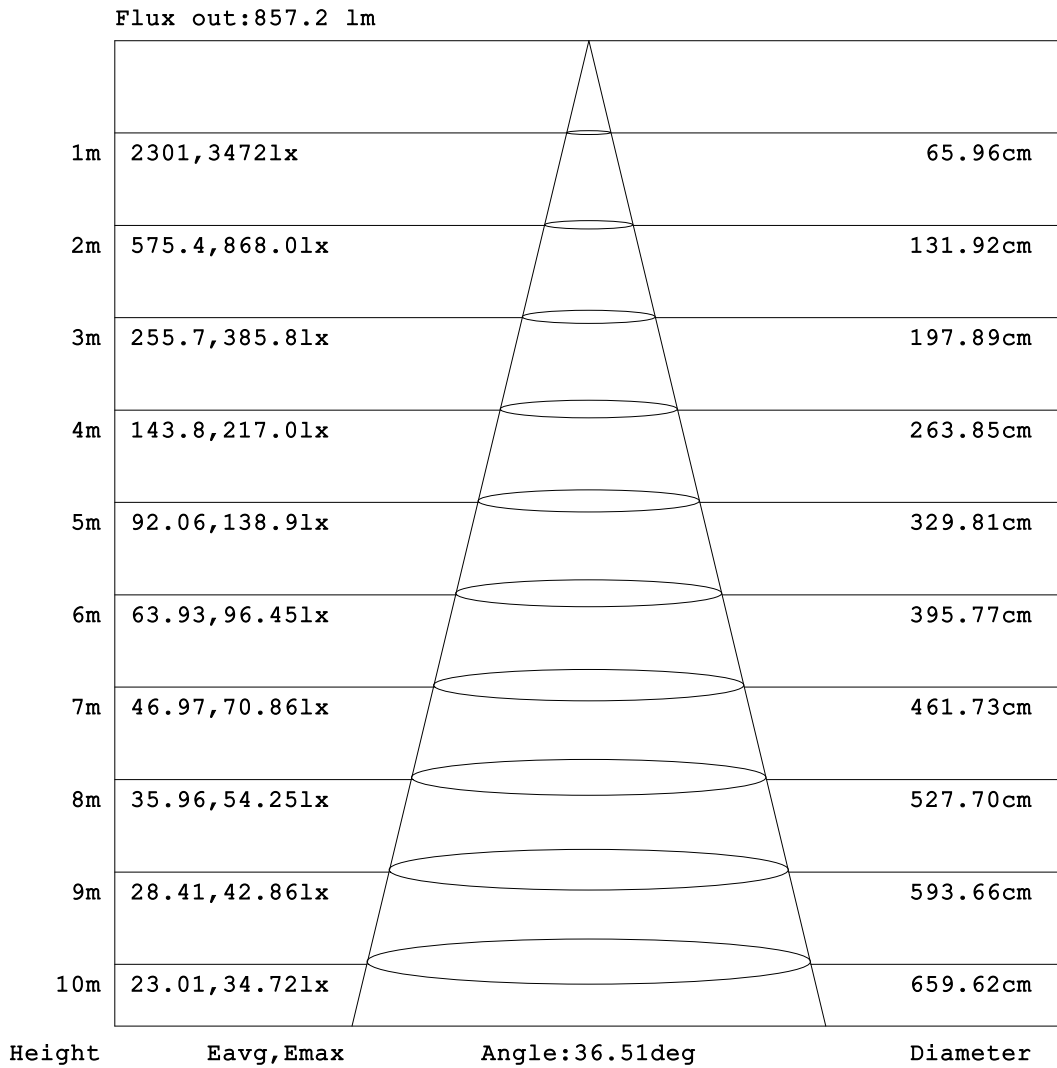


C Range: 0 - 360DEG
 C Interval: 15.0DEG
 Test Speed: HIGH
 Temperature: 25.3°C
 Operators: DAMIN
 Test Date: 2024-07-24

γ Range: 0 - 90DEG
 γ Interval: 1.0DEG
 Test System: EVERFINE GO-2000B_V1 SYSTEM V2.00.473
 Humidity: 65.0%
 Test Distance: 9.401m [K=1.0000]
 Remarks:

AAI Figure

Test:U:220.32V I:0.0971A P:20.605W PF:0.9628 Freq:50.00Hz Lamp Flux:1775.65x1 lm		
NAME:	TYPE:	WEIGHT:
SPEC.:	DIM.:	SERIAL No.:
MFR.: EVERFINE	SUR.:	Shielding Angle:



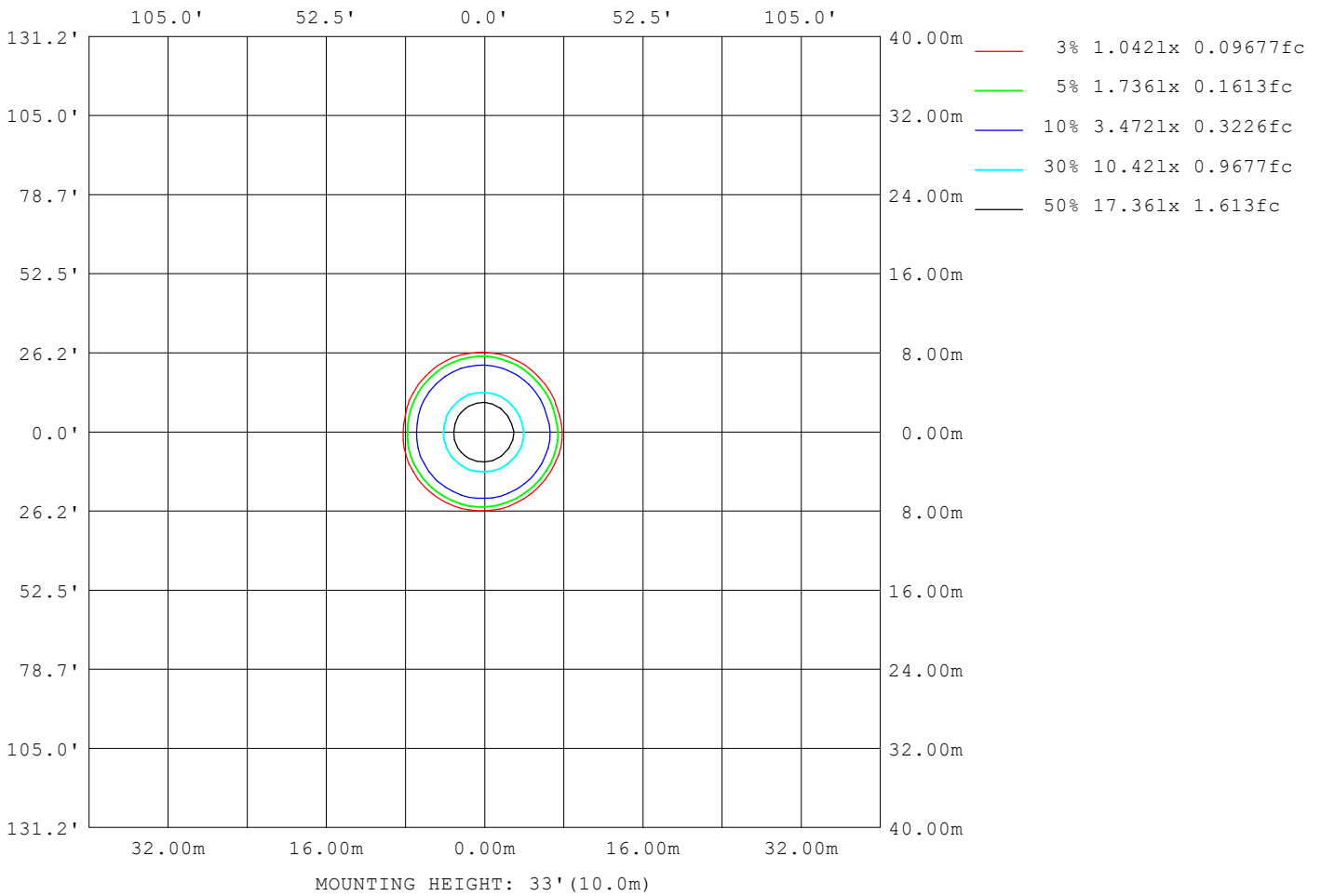
Note:The Curves indicate the illuminated area and the average illumination when the luminaire is at different distance.

C Range: 0 - 360DEG
C Interval: 15.0DEG
Test Speed: HIGH
Temperature:25.3°C
Operators:DAMIN
Test Date:2024-07-24

γ Range: 0 - 90DEG
γ Interval: 1.0DEG
Test System:EVERFINE GO-2000B_V1 SYSTEM V2.00.473
Humidity:65.0%
Test Distance:9.401m [K=1.0000]
Remarks:

ISOLUX DIAGRAM

Test:U:220.32V I:0.0971A P:20.605W PF:0.9628 Freq:50.00Hz Lamp Flux:1775.65x1 lm		
NAME:	TYPE:	WEIGHT:
SPEC.:	DIM.:	SERIAL No.:
MFR.: EVERFINE	SUR.:	Shielding Angle:



C Range: 0 - 360DEG
 C Interval: 15.0DEG
 Test Speed: HIGH
 Temperature:25.3°C
 Operators:DAMIN
 Test Date:2024-07-24

γ Range: 0 - 90DEG
 γ Interval: 1.0DEG
 Test System:EVERFINE GO-2000B_V1 SYSTEM V2.00.473
 Humidity:65.0%
 Test Distance:9.401m [K=1.0000]
 Remarks:

LED Avg.L Report

Test:U:220.32V I:0.0971A P:20.605W PF:0.9628 Freq:50.00Hz Lamp Flux:1775.65x1 lm		
NAME:	TYPE:	WEIGHT:
SPEC.:	DIM.:	SERIAL No.:
MFR.: EVERFINE	SUR.:	Shielding Angle:

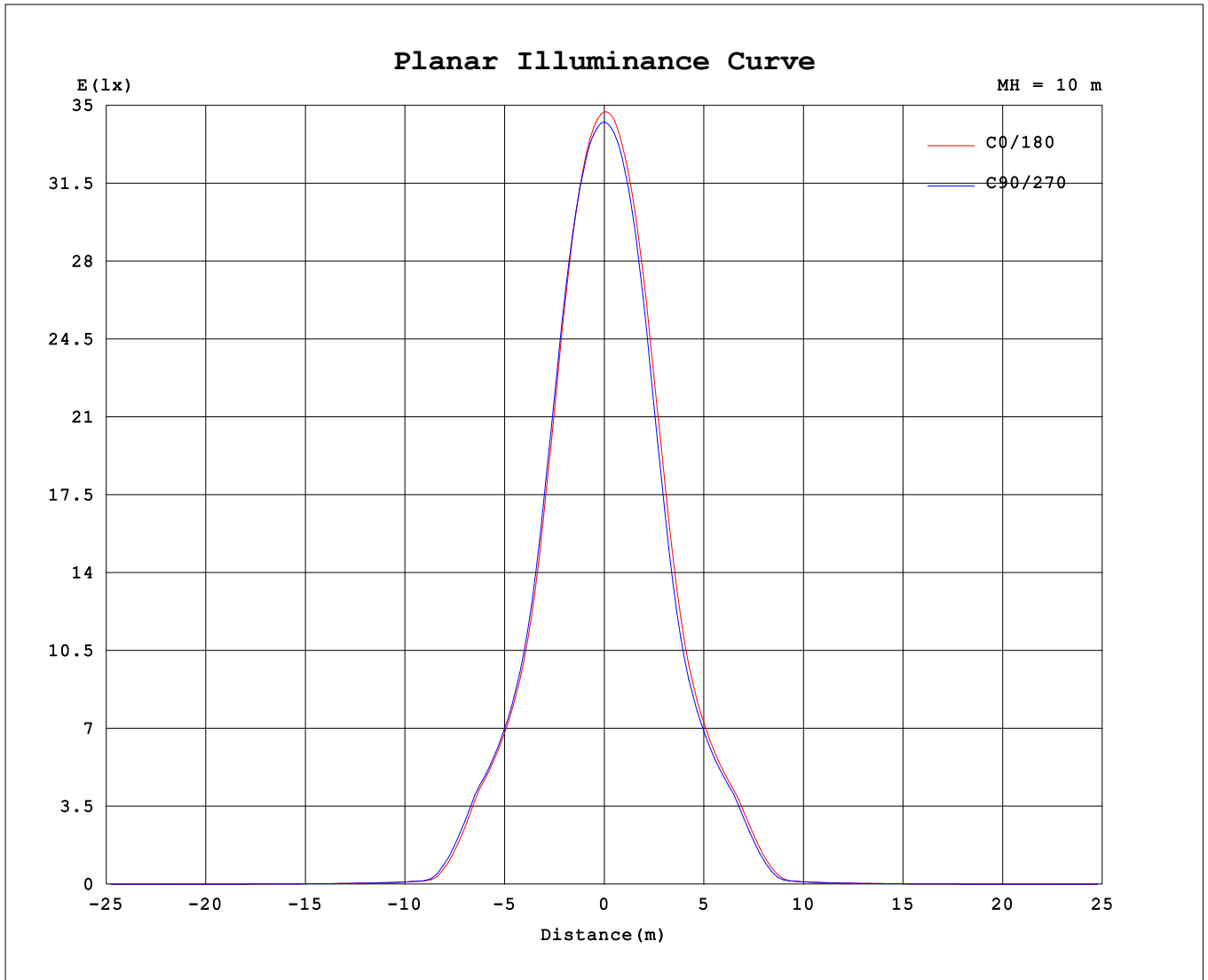
AvgL	cd/m2
L_0~180 (65) av	154
L_0~180 (75) av	133
L_0~180 (85) av	13
L_90~270 (65) av	155
L_90~270 (75) av	134
L_90~270 (85) av	9
L_45 (65) av	156
L_45 (75) av	134
L_45 (85) av	18

Standard: GB/T 29293-2012

C Range: 0 - 360DEG
 C Interval: 15.0DEG
 Test Speed: HIGH
 Temperature:25.3°C
 Operators:DAMIN
 Test Date:2024-07-24

γ Range: 0 - 90DEG
 γ Interval: 1.0DEG
 Test System:EVERFINE GO-2000B_V1 SYSTEM V2.00.473
 Humidity:65.0%
 Test Distance:9.401m [K=1.0000]
 Remarks:

Planar Illuminance Curve



C Range: 0 - 360DEG
C Interval: 15.0DEG
Test Speed: HIGH
Temperature: 25.3°C
Operators: DAMIN
Test Date: 2024-07-24

γ Range: 0 - 90DEG
γ Interval: 1.0DEG
Test System: EVERFINE GO-2000B_V1 SYSTEM V2.00.473
Humidity: 65.0%
Test Distance: 9.401m [K=1.0000]
Remarks:

LUMINOUS DISTRIBUTION INTENSITY DATA

Test:U:220.32V I:0.0971A P:20.605W PF:0.9628 Freq:50.00Hz Lamp Flux:1775.65x1 lm		
NAME:	TYPE:	WEIGHT:
SPEC.:	DIM.:	SERIAL No.:
MFR.: EVERFINE	SUR.:	Shielding Angle:

Table--1

UNIT: cd

C (DEG) \ γ (DEG)	0	15	30	45	60	75	90	105	120	135	150	165	180	195	210	225	240	255	270
0	3431	3431	3431	3431	3431	3431	3431	3431	3431	3431	3431	3431	3431	3431	3431	3431	3431	3431	3431
5	3291	3292	3288	3293	3297	3316	3315	3333	3339	3354	3356	3360	3330	3331	3337	3331	3337	3322	3315
10	2871	2880	2867	2884	2887	2921	2936	2972	2992	3025	3031	3040	2980	2973	2984	2969	2964	2934	2918
15	2157	2170	2157	2179	2189	2232	2258	2319	2347	2397	2404	2421	2331	2309	2326	2296	2291	2245	2214
20	1436	1447	1439	1463	1467	1500	1517	1567	1588	1634	1646	1666	1581	1569	1578	1559	1550	1505	1475
25	1028	1034	1028	1044	1045	1063	1072	1095	1101	1122	1126	1139	1099	1095	1103	1095	1087	1065	1051
30	777	784	777	787	791	804	811	828	833	847	846	855	833	834	840	833	831	817	807
35	457	466	452	464	470	503	516	554	569	601	607	628	592	594	603	595	591	566	547
40	75.5	74.6	67.9	74.9	75.2	92.0	105	132	157	177	186	206	168	175	179	177	169	155	133
45	29.1	29.5	29.4	29.7	30.1	31.4	32.0	32.8	33.0	33.9	34.2	34.8	33.4	33.3	34.4	34.1	34.0	33.3	32.2
50	22.2	22.2	22.0	22.2	22.2	22.5	22.7	23.3	23.6	23.9	23.9	24.2	23.5	23.6	23.8	23.7	23.7	23.4	23.1
55	16.4	16.3	16.1	16.2	16.3	16.7	17.0	17.6	17.9	18.3	18.4	18.6	17.9	18.1	18.3	18.3	18.2	17.9	17.6
60	10.4	10.5	10.2	10.4	10.3	10.8	10.9	11.4	11.7	12.1	12.2	12.5	11.8	11.9	12.1	12.1	12.1	11.8	11.5
65	6.05	6.08	5.92	6.00	6.01	6.22	6.28	6.60	6.77	7.11	7.21	7.48	7.01	7.07	7.24	7.23	7.23	7.01	6.85
70	3.96	3.90	3.86	3.86	3.88	3.91	3.94	3.96	4.08	4.19	4.35	4.52	4.45	4.61	4.66	4.75	4.69	4.54	4.45
75	3.27	3.18	3.20	3.10	3.15	3.08	3.15	3.11	3.25	3.28	3.51	3.58	3.63	3.82	3.90	4.01	3.91	3.81	3.77
80	1.97	1.90	1.88	1.84	1.87	1.92	1.96	2.04	2.18	2.24	2.41	2.51	2.41	2.62	2.70	2.82	2.68	2.66	2.47
85	0.00	0.00	0.00	0.00	0.00	0.00	0.00	0.00	0.08	0.17	0.30	0.40	0.23	0.34	0.39	0.44	0.40	0.31	0.16
90	0.00	0.00	0.00	0.00	0.00	0.00	0.00	0.00	0.00	0.00	0.00	0.00	0.00	0.00	0.00	0.00	0.00	0.00	0.00

C Range: 0 - 360DEG
 C Interval: 15.0DEG
 Test Speed: HIGH
 Temperature:25.3°C
 Operators:DAMIN
 Test Date:2024-07-24

γ Range: 0 - 90DEG
 γ Interval: 1.0DEG
 Test System:EVERFINE GO-2000B_V1 SYSTEM V2.00.473
 Humidity:65.0%
 Test Distance:9.401m [K=1.0000]
 Remarks:

LUMINOUS DISTRIBUTION INTENSITY DATA

Test:U:220.32V I:0.0971A P:20.605W PF:0.9628 Freq:50.00Hz Lamp Flux:1775.65x1 lm		
NAME:	TYPE:	WEIGHT:
SPEC.:	DIM.:	SERIAL No.:
MFR.: EVERFINE	SUR.:	Shielding Angle:

Table--2

UNIT: cd

C (DEG) \ γ (DEG)	285	300	315	330	345														
0	3431	3431	3431	3431	3431														
5	3296	3286	3273	3270	3262														
10	2876	2861	2827	2824	2806														
15	2160	2143	2100	2098	2075														
20	1432	1416	1388	1386	1372														
25	1030	1022	1007	1001	994														
30	790	781	770	766	758														
35	507	485	452	440	419														
40	107	95.1	77.4	69.9	59.9														
45	30.4	29.5	29.1	28.1	27.7														
50	22.7	22.5	22.1	21.9	21.6														
55	17.2	16.8	16.3	16.1	15.8														
60	11.0	10.8	10.3	10.2	9.86														
65	6.47	6.27	5.97	5.88	5.75														
70	4.31	4.12	4.05	3.91	3.88														
75	3.67	3.49	3.45	3.29	3.26														
80	2.36	2.18	2.07	1.93	1.88														
85	0.06	0.00	0.00	0.00	0.00														
90	0.00	0.00	0.00	0.00	0.00														

C Range: 0 - 360DEG
 C Interval: 15.0DEG
 Test Speed: HIGH
 Temperature:25.3°C
 Operators:DAMIN
 Test Date:2024-07-24

γ Range: 0 - 90DEG
 γ Interval: 1.0DEG
 Test System:EVERFINE GO-2000B_V1 SYSTEM V2.00.473
 Humidity:65.0%
 Test Distance:9.401m [K=1.0000]
 Remarks: