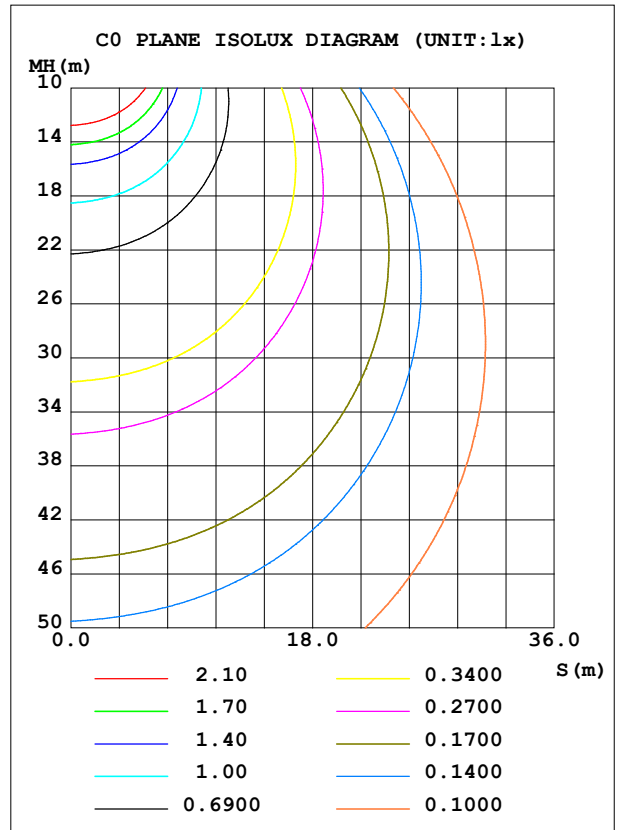
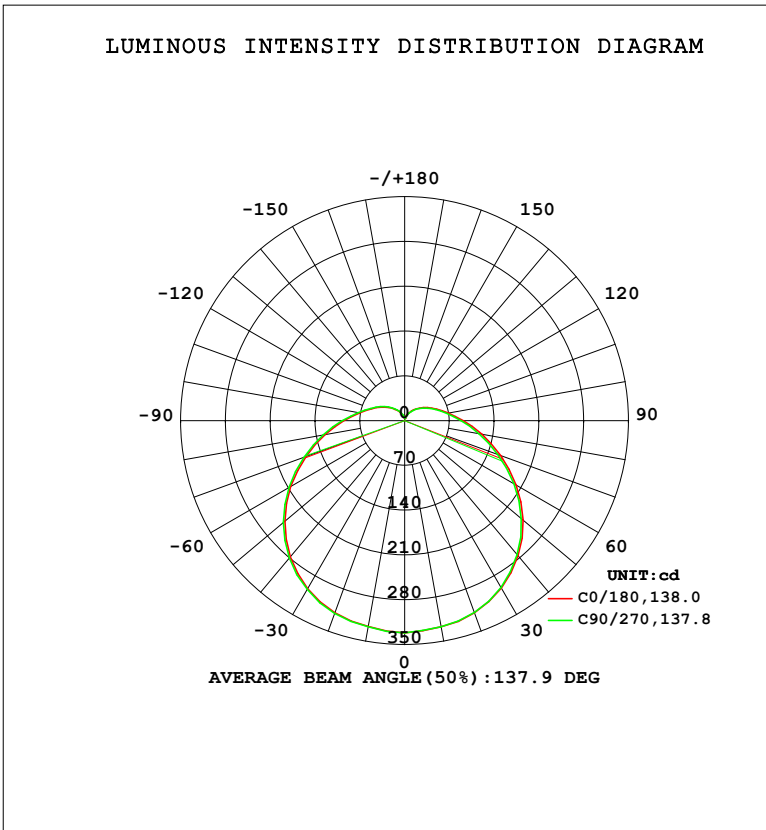


LUMINAIRE PHOTOMETRIC TEST REPORT

Test:U:220.35V I:0.1195A P:13.587W PF:0.5160 Freq:50.00Hz Lamp Flux:1577.18x1 lm		
NAME: 球泡	TYPE:	WEIGHT:
SPEC.:	DIM.:	SERIAL No.:
MFR.: EVERFINE	SUR.: 1	Shielding Angle:

DATA OF LAMP		PHOTOMETRIC DATA				Eff: 116.08 lm/W
MODEL	CF18	I _{max} (cd)	331.7	S/MH (C0/180)	1.36	
NOMINAL POWER (W)	15	LOR (%)	100.0	S/MH (C90/270)	1.37	
RATED VOLTAGE (V)	220	TOTAL FLUX (lm)	1577.2	η UP, DN (C0-180)	8.5, 40.7	
NOMINAL FLUX (lm)	1577.18	CIE CLASS	SEMI-D.	η UP, DN (C180-360)	9.1, 41.8	
LAMPS INSIDE	1	η up (%)	17.5	CIBSE SHR NOM	1.50	
TEST VOLTAGE (V)	219.5	η down (%)	82.5	CIBSE SHR MAX	1.55	



C Range: 0 - 360DEG
 C Interval: 22.5DEG
 Test Speed: HIGH
 Temperature: 25.3°C
 Operators: DAMIN
 Test Date: 2023-11-09

γ Range: 0 - 180DEG
 γ Interval: 5.0DEG
 Test System: EVERFINE GO-2000B_V1 SYSTEM V2.00.473
 Humidity: 65.0%
 Test Distance: 9.401m [K=1.0000]
 Remarks:

ZONAL FLUX DIAGRAM

ZONAL FLUX DIAGRAM:

γ	C0	C45	C90	C135	C180	C225	C270	C315	γ	Φ zone	Φ total	%lum,lamp
10	327.4	327.4	327.3	326.9	326.6	326.4	327.2	327.1	0- 10	31.40	31.40	1.99,1.99
20	319.8	319.2	319.1	318.8	319.7	319.9	320.6	320.5	10- 20	91.75	123.2	7.81,7.81
30	302.2	301.2	301.0	301.3	303.2	304.1	304.8	304.5	20- 30	144.2	267.3	17,17
40	275.9	273.9	273.6	274.8	278.2	279.4	280.1	279.2	30- 40	182.2	449.5	28.5,28.5
50	241.6	238.9	238.1	240.0	244.6	247.1	247.4	245.9	40- 50	201.4	650.9	41.3,41.3
60	201.2	198.0	197.0	199.7	205.6	208.7	208.7	206.5	50- 60	200.1	851.1	54,54
70	159.8	156.5	155.2	158.0	164.0	167.5	167.6	164.8	60- 70	180.8	1032	65.4,65.4
80	122.4	119.5	118.1	120.5	126.2	129.7	129.3	126.7	70- 80	150.7	1183	75,75
90	91.72	89.50	88.37	90.29	95.08	98.00	97.80	95.41	80- 90	118.1	1301	82.5,82.5
100	69.23	67.68	66.81	68.18	71.64	73.83	73.85	72.06	90-100	88.80	1389	88.1,88.1
110	53.47	52.23	51.59	52.62	55.15	56.74	56.75	55.52	100-110	65.67	1455	92.3,92.3
120	41.28	40.32	39.81	40.64	42.64	43.98	44.12	43.09	110-120	47.70	1503	95.3,95.3
130	31.09	30.27	29.87	30.60	32.26	33.36	33.53	32.72	120-130	33.04	1536	97.4,97.4
140	22.48	21.71	21.43	22.07	23.46	24.39	24.58	23.87	130-140	21.21	1557	98.7,98.7
150	15.01	14.29	14.07	14.69	15.86	16.62	16.84	16.21	140-150	12.12	1569	99.5,99.5
160	8.701	8.074	7.922	8.464	9.335	9.975	10.13	9.667	150-160	5.701	1575	99.9,99.9
170	4.543	4.208	4.049	4.358	4.764	5.113	5.264	5.054	160-170	1.943	1577	100,100
180	3.562	3.569	3.579	3.579	3.655	3.635	3.615	3.609	170-180	0.3950	1577	100,100
DEG	LUMINOUS INTENSITY:cd									UNIT:lm		

Conical surface Flux(90deg): 549.1 lm

%lum = 34.8%

%lamp = 34.8%

Conical surface Flux(130deg): 944.76 lm

%lum = 59.9%

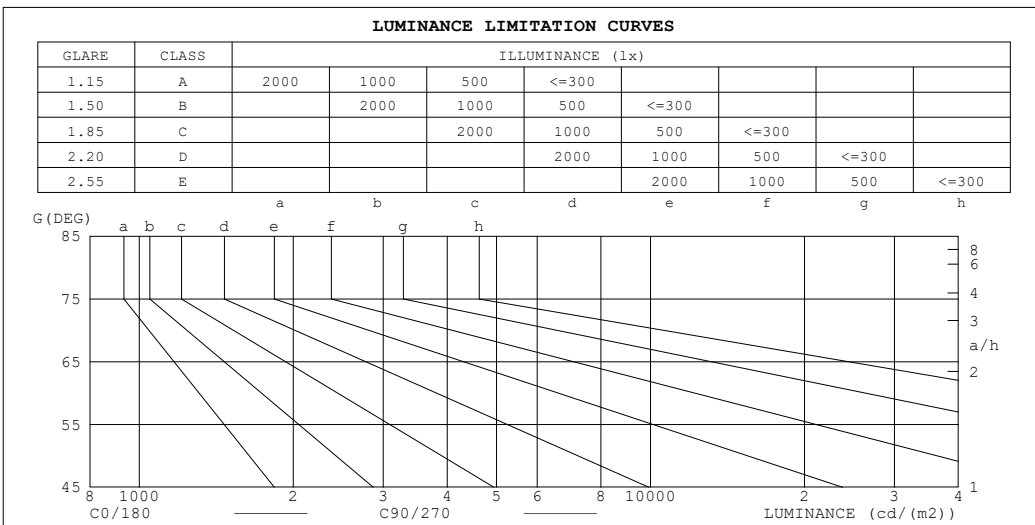
%lamp = 59.9%

C Range: 0 - 360DEG
 C Interval: 22.5DEG
 Test Speed: HIGH
 Temperature:25.3°C
 Operators:DAMIN
 Test Date:2023-11-09

γ Range: 0 - 180DEG
 γ Interval: 5.0DEG
 Test System:EVERFINE GO-2000B_V1 SYSTEM V2.00.473
 Humidity:65.0%
 Test Distance:9.401m [K=1.0000]
 Remarks:

LUMINANCE LIMITATION CURVES

Test:U:220.35V I:0.1195A P:13.587W PF:0.5160 Freq:50.00Hz Lamp Flux:1577.18x1 lm		
NAME: 球泡	TYPE:	WEIGHT:
SPEC.:	DIM.:	SERIAL No.:
MFR.: EVERFINE	SUR.: 1	Shielding Angle:



LUMINANCE cd/(m2)		
G (DEG)	C0/180	C90/270
85	1259	1164
80	729	674
75	560	520
70	483	450
65	441	412
60	416	390
55	400	377
50	389	367
45	380	360

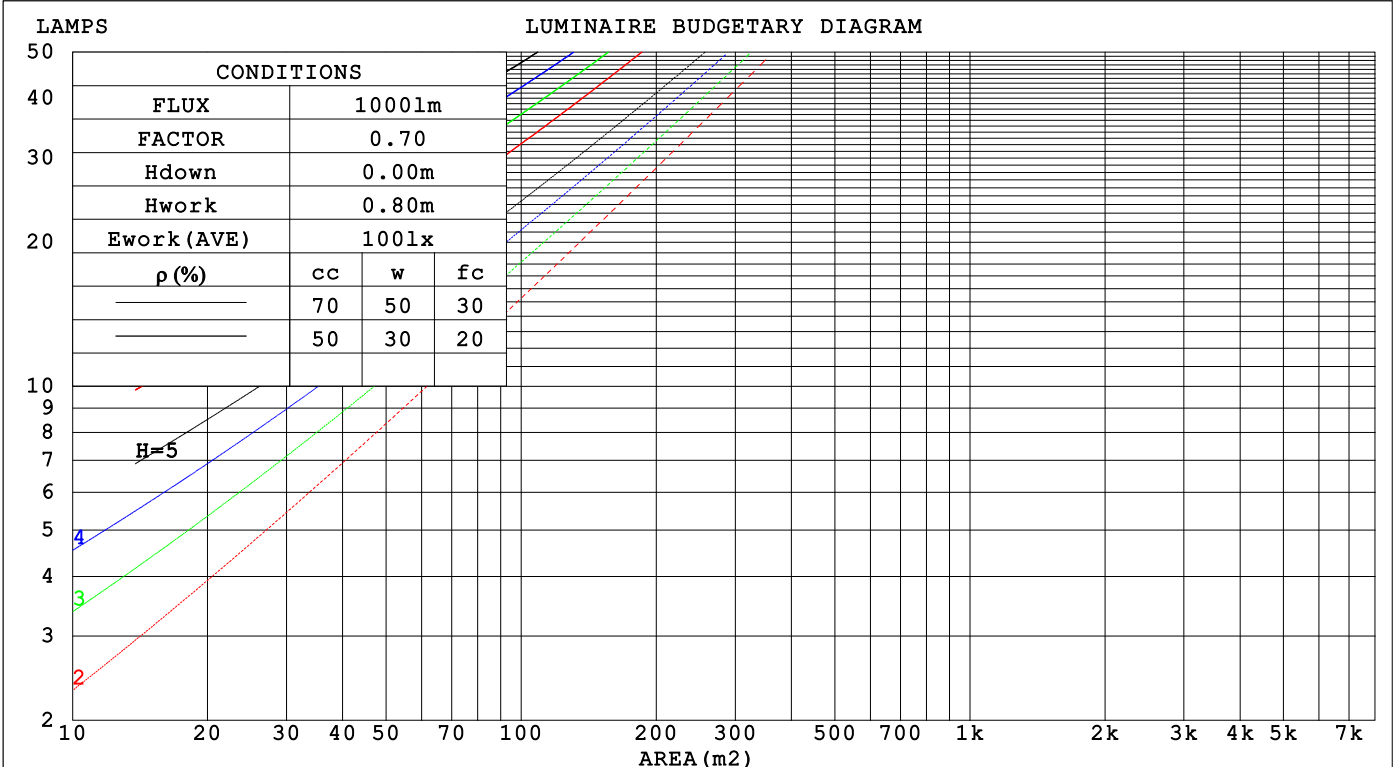
C Range: 0 - 360DEG
 C Interval: 22.5DEG
 Test Speed: HIGH
 Temperature:25.3°C
 Operators:DAMIN
 Test Date:2023-11-09

γ Range: 0 - 180DEG
 γ Interval: 5.0DEG
 Test System:EVERFINE GO-2000B_V1 SYSTEM V2.00.473
 Humidity:65.0%
 Test Distance:9.401m [K=1.0000]
 Remarks:

CU AND LUMINAIRE BUDGETARY ESTIMATE DIAGRAM

Test:U:220.35V I:0.1195A P:13.587W PF:0.5160 Freq:50.00Hz Lamp Flux:1577.18x1 lm		
NAME: 球泡	TYPE:	WEIGHT:
SPEC.:	DIM.:	SERIAL No.:
MFR.: EVERFINE	SUR.: 1	Shielding Angle:

ρ_{cc}	80%			70%			50%			30%			10%			0
ρ_w	50%	30%	10%	50%	30%	10%	50%	30%	10%	50%	30%	10%	50%	30%	10%	0
ρ_{fc}	20%			20%			20%			20%			20%			0
RCR	RCR:Room Cavity Ratio						Coefficients of Utilization(CU)									
0.0	1.15	1.15	1.15	1.10	1.10	1.10	1.01	1.01	1.01	.93	.93	.93	.86	.86	.86	.82
1.0	.96	.90	.85	.92	.87	.82	.84	.80	.77	.77	.74	.71	.71	.68	.66	.63
2.0	.82	.74	.67	.78	.71	.65	.72	.66	.61	.66	.61	.57	.60	.56	.53	.50
3.0	.71	.62	.55	.68	.60	.53	.62	.55	.50	.57	.51	.47	.52	.48	.44	.41
4.0	.62	.53	.45	.60	.51	.44	.55	.47	.42	.50	.44	.39	.46	.41	.37	.34
5.0	.55	.46	.39	.53	.44	.38	.49	.41	.35	.45	.39	.33	.41	.36	.32	.29
6.0	.49	.40	.33	.47	.39	.32	.44	.36	.31	.40	.34	.29	.37	.32	.27	.25
7.0	.44	.35	.29	.43	.34	.28	.40	.32	.27	.37	.30	.25	.34	.28	.24	.22
8.0	.40	.32	.26	.39	.31	.25	.36	.29	.24	.34	.27	.23	.31	.26	.21	.19
9.0	.37	.28	.23	.36	.28	.22	.33	.26	.21	.31	.25	.20	.29	.23	.19	.17
10.0	.34	.26	.20	.33	.25	.20	.31	.24	.19	.28	.22	.18	.27	.21	.17	.15



C Range: 0 - 360DEG
 C Interval: 22.5DEG
 Test Speed: HIGH
 Temperature:25.3°C
 Operators:DAMIN
 Test Date:2023-11-09

γ Range: 0 - 180DEG
 γ Interval: 5.0DEG
 Test System:EVERFINE GO-2000B_V1 SYSTEM V2.00.473
 Humidity:65.0%
 Test Distance:9.401m [K=1.0000]
 Remarks:

WEC AND CCEC

Test:U:220.35V I:0.1195A P:13.587W PF:0.5160 Freq:50.00Hz								
Lamp Flux:1577.18x1 lm								
NAME: 球泡			TYPE:			WEIGHT:		
SPEC.:			DIM.:			SERIAL No.:		
MFR.: EVERFINE			SUR.: 1			Shielding Angle:		

ρ_{CC}	80%			70%			50%			30%			10%			0
ρ_w	50%	30%	10%	50%	30%	10%	50%	30%	10%	50%	30%	10%	50%	30%	10%	0
ρ_{fc}	20%			20%			20%			20%			20%			0
RCR	RCR:Room Cavity Ratio						Wall Exitance Coefficients(WEC)									
0.0																
1.0	.386	.220	.070	.374	.213	.068	.350	.201	.064	.328	.189	.061	.308	.179	.058	
2.0	.334	.183	.056	.323	.178	.055	.302	.168	.052	.282	.158	.050	.264	.149	.047	
3.0	.297	.158	.047	.287	.154	.046	.268	.145	.044	.250	.137	.042	.233	.129	.040	
4.0	.267	.139	.041	.258	.135	.040	.241	.128	.038	.225	.121	.036	.209	.114	.035	
5.0	.243	.124	.036	.235	.121	.035	.219	.114	.034	.204	.108	.032	.190	.102	.031	
6.0	.223	.112	.032	.215	.109	.031	.201	.103	.030	.187	.097	.029	.175	.092	.027	
7.0	.205	.102	.029	.198	.099	.028	.185	.094	.027	.173	.089	.026	.161	.084	.025	
8.0	.190	.093	.026	.184	.091	.026	.172	.086	.025	.161	.081	.023	.150	.077	.022	
9.0	.178	.086	.024	.172	.084	.023	.161	.079	.022	.150	.075	.022	.140	.071	.021	
10.0	.166	.080	.022	.161	.078	.022	.150	.074	.021	.141	.070	.020	.131	.066	.019	

ρ_{CC}	80%			70%			50%			30%			10%			0
ρ_w	50%	30%	10%	50%	30%	10%	50%	30%	10%	50%	30%	10%	50%	30%	10%	0
ρ_{fc}	20%			20%			20%			20%			20%			0
RCR	RCR:Room Cavity Ratio						Ceiling Cavity Exitance Coefficients(CCEC)									
0.0	.324	.324	.324	.277	.277	.277	.189	.189	.189	.109	.109	.109	.035	.035	.035	
1.0	.320	.290	.263	.274	.249	.226	.187	.171	.157	.108	.099	.091	.035	.032	.029	
2.0	.314	.267	.228	.269	.230	.197	.184	.159	.138	.106	.093	.081	.034	.030	.026	
3.0	.306	.251	.207	.262	.216	.179	.180	.150	.126	.104	.088	.074	.033	.029	.024	
4.0	.298	.238	.193	.256	.206	.167	.176	.144	.118	.102	.084	.070	.033	.027	.023	
5.0	.291	.229	.183	.250	.198	.159	.172	.138	.112	.100	.081	.067	.032	.026	.022	
6.0	.283	.221	.176	.243	.191	.153	.168	.134	.108	.097	.079	.064	.031	.026	.021	
7.0	.276	.214	.170	.237	.185	.149	.164	.130	.105	.095	.077	.063	.031	.025	.021	
8.0	.269	.208	.167	.232	.181	.145	.160	.127	.103	.093	.075	.061	.030	.025	.020	
9.0	.263	.204	.163	.227	.177	.143	.157	.124	.101	.091	.073	.060	.030	.024	.020	
10.0	.257	.199	.161	.222	.173	.141	.154	.122	.100	.090	.072	.060	.029	.024	.020	

C Range: 0 - 360DEG
 C Interval: 22.5DEG
 Test Speed: HIGH
 Temperature:25.3°C
 Operators:DAMIN
 Test Date:2023-11-09

γ Range: 0 - 180DEG
 γ Interval: 5.0DEG
 Test System:EVERFINE GO-2000B_V1 SYSTEM V2.00.473
 Humidity:65.0%
 Test Distance:9.401m [K=1.0000]
 Remarks:

UGR(Unified Glare Rating) Table

Test:U:220.35V I:0.1195A P:13.587W PF:0.5160 Freq:50.00Hz										
Lamp Flux:1577.18x1 lm										
NAME: 球泡			TYPE:				WEIGHT:			
SPEC.:			DIM.:				SERIAL No.:			
MFR.: EVERFINE			SUR.: 1				Shielding Angle:			
ceiling/cavity	0.7	0.7	0.5	0.5	0.3	0.7	0.7	0.5	0.5	0.3
walls	0.5	0.3	0.5	0.3	0.3	0.5	0.3	0.5	0.3	0.3
working plane	0.2	0.2	0.2	0.2	0.2	0.2	0.2	0.2	0.2	0.2
Room dimensions	Viewed crosswise					Viewed endwise				
x = 2H y = 2H	7.0	8.4	7.5	8.9	9.5	6.8	8.2	7.3	8.7	9.2
3H	9.3	10.5	9.8	11.1	11.7	8.9	10.2	9.5	10.7	11.3
4H	10.5	11.7	11.0	12.2	12.8	10.1	11.3	10.6	11.9	12.5
6H	11.7	12.9	12.3	13.5	14.1	11.3	12.5	11.9	13.1	13.7
8H	12.5	13.6	13.0	14.1	14.8	12.0	13.1	12.6	13.7	14.4
12H	13.3	14.4	13.9	14.9	15.6	12.8	13.9	13.4	14.5	15.2
4H 2H	7.7	8.9	8.3	9.5	10.1	7.5	8.7	8.1	9.3	9.9
3H	10.2	11.2	10.7	11.8	12.5	9.9	11.0	10.5	11.6	12.2
4H	11.5	12.5	12.1	13.1	13.8	11.2	12.2	11.8	12.8	13.5
6H	13.0	13.9	13.7	14.5	15.3	12.7	13.5	13.3	14.2	14.9
8H	13.8	14.7	14.5	15.3	16.1	13.5	14.3	14.1	14.9	15.7
12H	14.8	15.5	15.5	16.2	17.0	14.4	15.1	15.1	15.8	16.6
8H 4H	12.0	12.8	12.7	13.5	14.2	11.8	12.6	12.4	13.2	14.0
6H	13.8	14.5	14.4	15.1	15.9	13.5	14.2	14.2	14.8	15.6
8H	14.8	15.4	15.5	16.1	16.9	14.5	15.1	15.2	15.8	16.6
12H	16.0	16.5	16.7	17.2	18.1	15.6	16.2	16.3	16.9	17.7
12H 4H	12.1	12.9	12.8	13.5	14.3	11.9	12.6	12.5	13.3	14.1
6H	14.0	14.6	14.7	15.3	16.1	13.7	14.3	14.4	15.0	15.8
8H	15.1	15.6	15.8	16.4	17.2	14.8	15.3	15.5	16.1	16.9
Variations with the observer position at spacings(CIE Pub.117):										
S = 1.0H	+ 0.1 / - 0.1					+ 0.1 / - 0.1				
1.5H	+ 0.2 / - 0.3					+ 0.2 / - 0.3				
2.0H	+ 0.2 / - 0.3					+ 0.2 / - 0.4				

CIE Pub.117, 1577 lm Total Lamp Luminous Flux Correct (8log(F/F0) = 1.6)
 Area: 1 m2

C Range: 0 - 360DEG
 C Interval: 22.5DEG
 Test Speed: HIGH
 Temperature:25.3°C
 Operators:DAMIN
 Test Date:2023-11-09

γ Range: 0 - 180DEG
 γ Interval: 5.0DEG
 Test System:EVERFINE GO-2000B_V1 SYSTEM V2.00.473
 Humidity:65.0%
 Test Distance:9.401m [K=1.0000]
 Remarks:

UTILIZATION FACTORS TABLE

Test:U:220.35V I:0.1195A P:13.587W PF:0.5160 Freq:50.00Hz Lamp Flux:1577.18x1 lm		
NAME: 球泡	TYPE:	WEIGHT:
SPEC.:	DIM.:	SERIAL No.:
MFR.: EVERFINE	SUR.: 1	Shielding Angle:

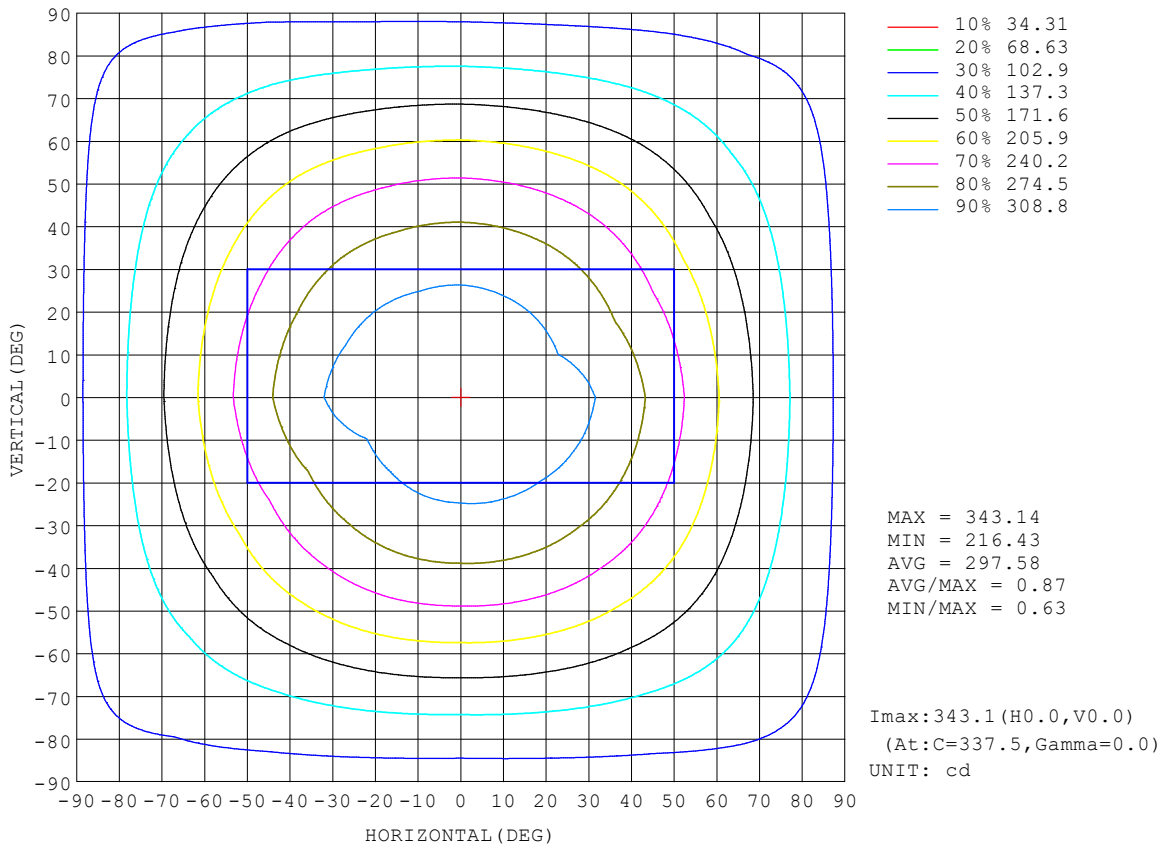
REFLECTANCE										
Ceiling	0.8	0.8	0.8	0.7	0.7	0.7	0.5	0.5	0.5	0
Walls	0.7	0.5	0.3	0.7	0.5	0.3	0.7	0.5	0.3	0
Working plane	0.2	0.2	0.2	0.2	0.2	0.2	0.2	0.2	0.2	0
ROOM INDEX	UTILIZATION FACTORS (PERCENT) $k(RI) \times RCR = 5$									
k = 0.60	48	35	28	47	35	28	45	34	27	20
0.80	57	44	36	55	43	35	53	42	35	27
1.00	65	52	43	63	51	43	59	51	42	33
1.25	72	59	50	69	58	50	65	55	48	38
1.50	77	64	56	74	63	55	69	60	53	42
2.00	84	73	65	81	71	63	75	67	60	49
2.50	89	78	70	85	76	69	79	71	65	53
3.00	92	83	75	89	80	73	82	75	70	56
4.00	97	89	82	93	86	80	86	80	75	61
5.00	100	93	87	96	90	84	88	84	79	64
ROOM INDEX	UF(total)									Direct
According to DIN EN 13032-2 2004			Suspended				SHRNOM = 1.25			

C Range: 0 - 360DEG
 C Interval: 22.5DEG
 Test Speed: HIGH
 Temperature:25.3°C
 Operators:DAMIN
 Test Date:2023-11-09

γ Range: 0 - 180DEG
 γ Interval: 5.0DEG
 Test System:EVERFINE GO-2000B_V1 SYSTEM V2.00.473
 Humidity:65.0%
 Test Distance:9.401m [K=1.0000]
 Remarks:

ISOCANDELA DIAGRAM

Test:U:220.35V I:0.1195A P:13.587W PF:0.5160 Freq:50.00Hz Lamp Flux:1577.18x1 lm		
NAME: 球泡	TYPE:	WEIGHT:
SPEC.:	DIM.:	SERIAL No.:
MFR.: EVERFINE	SUR.: 1	Shielding Angle:

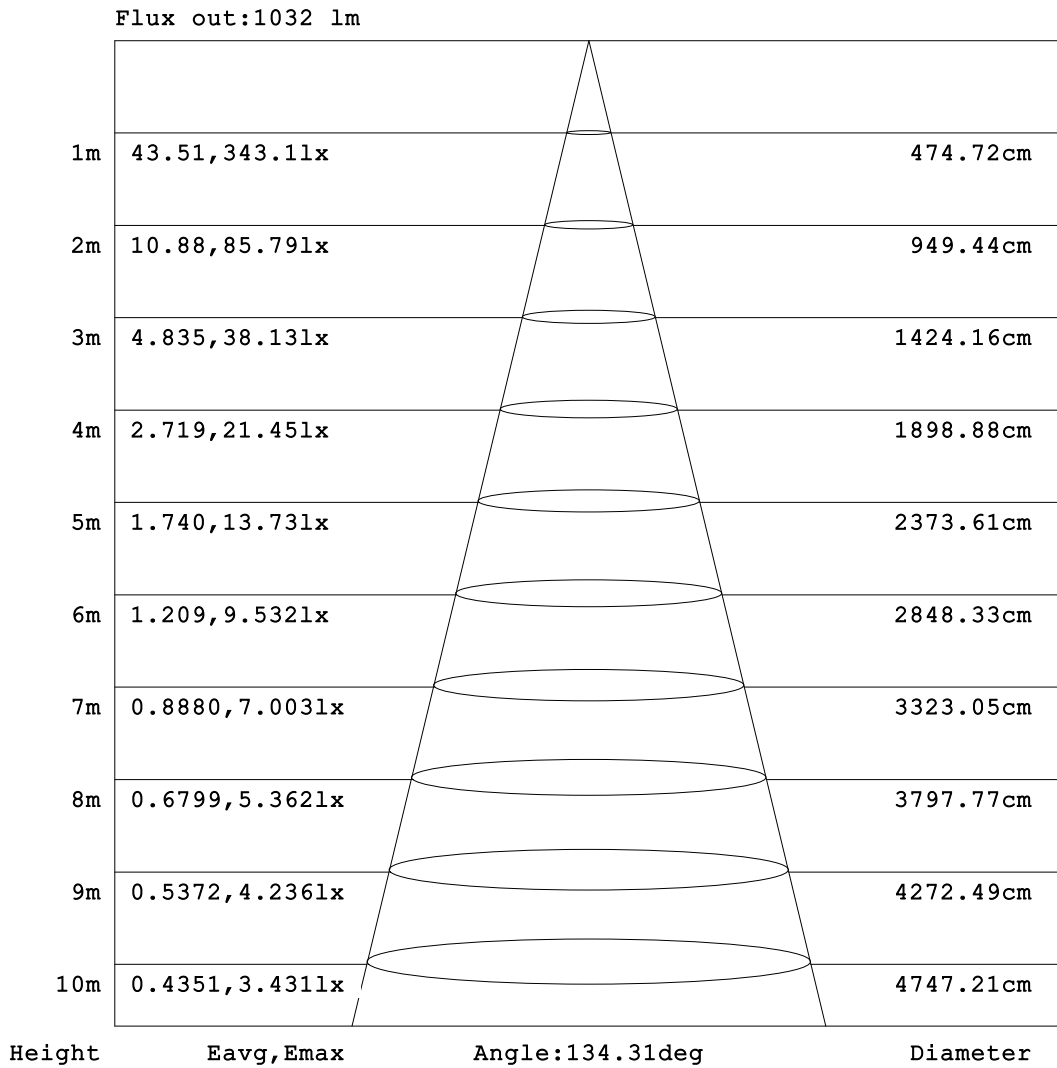


C Range: 0 - 360DEG
 C Interval: 22.5DEG
 Test Speed: HIGH
 Temperature:25.3°C
 Operators:DAMIN
 Test Date:2023-11-09

γ Range: 0 - 180DEG
 γ Interval: 5.0DEG
 Test System:EVERFINE GO-2000B_V1 SYSTEM V2.00.473
 Humidity:65.0%
 Test Distance:9.401m [K=1.0000]
 Remarks:

AAI Figure

Test:U:220.35V I:0.1195A P:13.587W PF:0.5160 Freq:50.00Hz Lamp Flux:1577.18x1 lm		
NAME: 球泡	TYPE:	WEIGHT:
SPEC.:	DIM.:	SERIAL No.:
MFR.: EVERFINE	SUR.: 1	Shielding Angle:



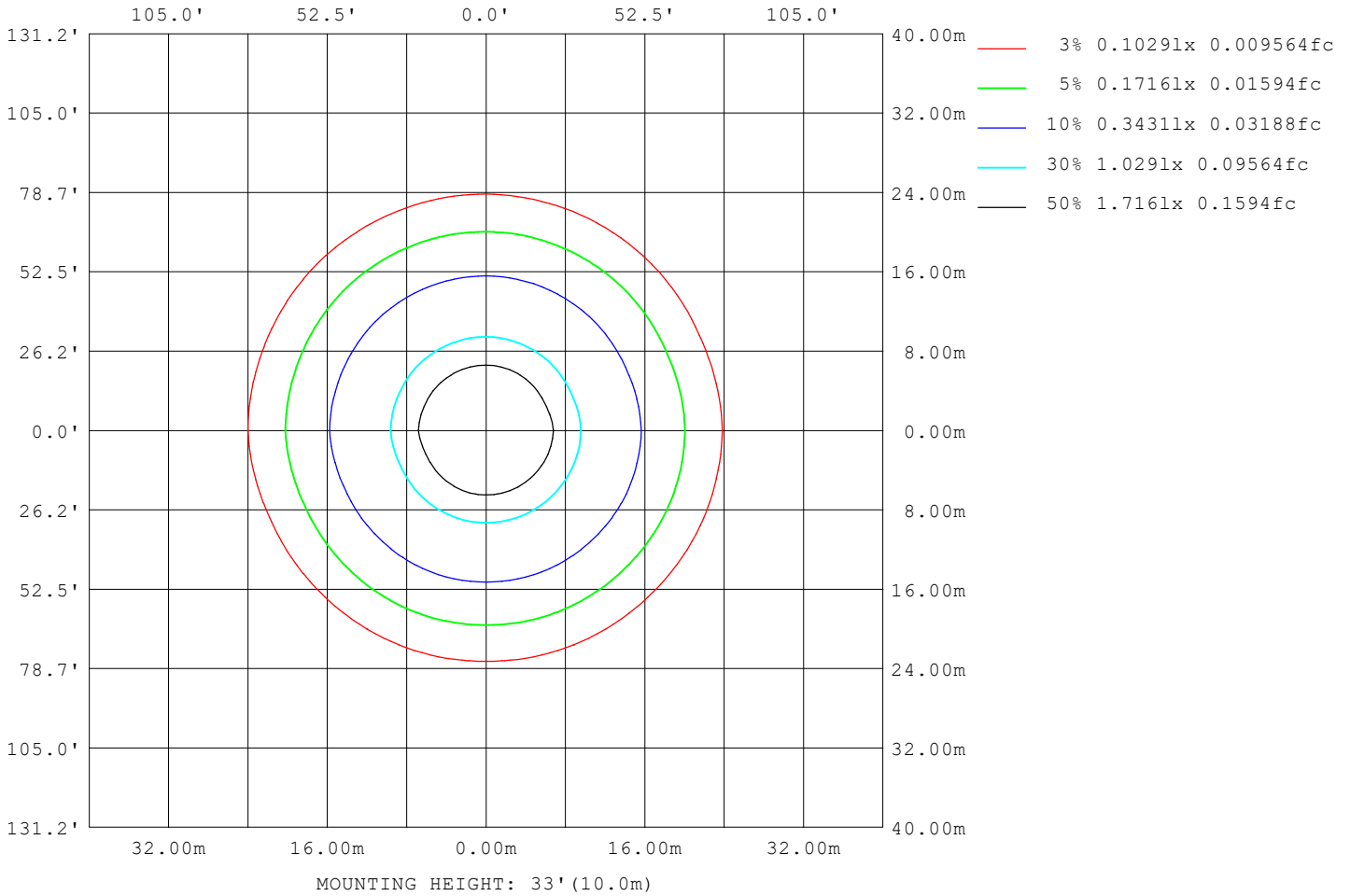
Note:The Curves indicate the illuminated area and the average illumination when the luminaire is at different distance.

C Range: 0 - 360DEG
C Interval: 22.5DEG
Test Speed: HIGH
Temperature:25.3°C
Operators:DAMIN
Test Date:2023-11-09

γ Range: 0 - 180DEG
γ Interval: 5.0DEG
Test System:EVERFINE GO-2000B_V1 SYSTEM V2.00.473
Humidity:65.0%
Test Distance:9.401m [K=1.0000]
Remarks:

ISOLUX DIAGRAM

Test:U:220.35V I:0.1195A P:13.587W PF:0.5160 Freq:50.00Hz Lamp Flux:1577.18x1 lm		
NAME: 球泡	TYPE:	WEIGHT:
SPEC.:	DIM.:	SERIAL No.:
MFR.: EVERFINE	SUR.: 1	Shielding Angle:



C Range: 0 - 360DEG
 C Interval: 22.5DEG
 Test Speed: HIGH
 Temperature:25.3°C
 Operators:DAMIN
 Test Date:2023-11-09

γ Range: 0 - 180DEG
 γ Interval: 5.0DEG
 Test System:EVERFINE GO-2000B_V1 SYSTEM V2.00.473
 Humidity:65.0%
 Test Distance:9.401m [K=1.0000]
 Remarks:

LED Avg.L Report

Test:U:220.35V I:0.1195A P:13.587W PF:0.5160 Freq:50.00Hz Lamp Flux:1577.18x1 lm		
NAME: 球泡	TYPE:	WEIGHT:
SPEC.:	DIM.:	SERIAL No.:
MFR.: EVERFINE	SUR.: 1	Shielding Angle:

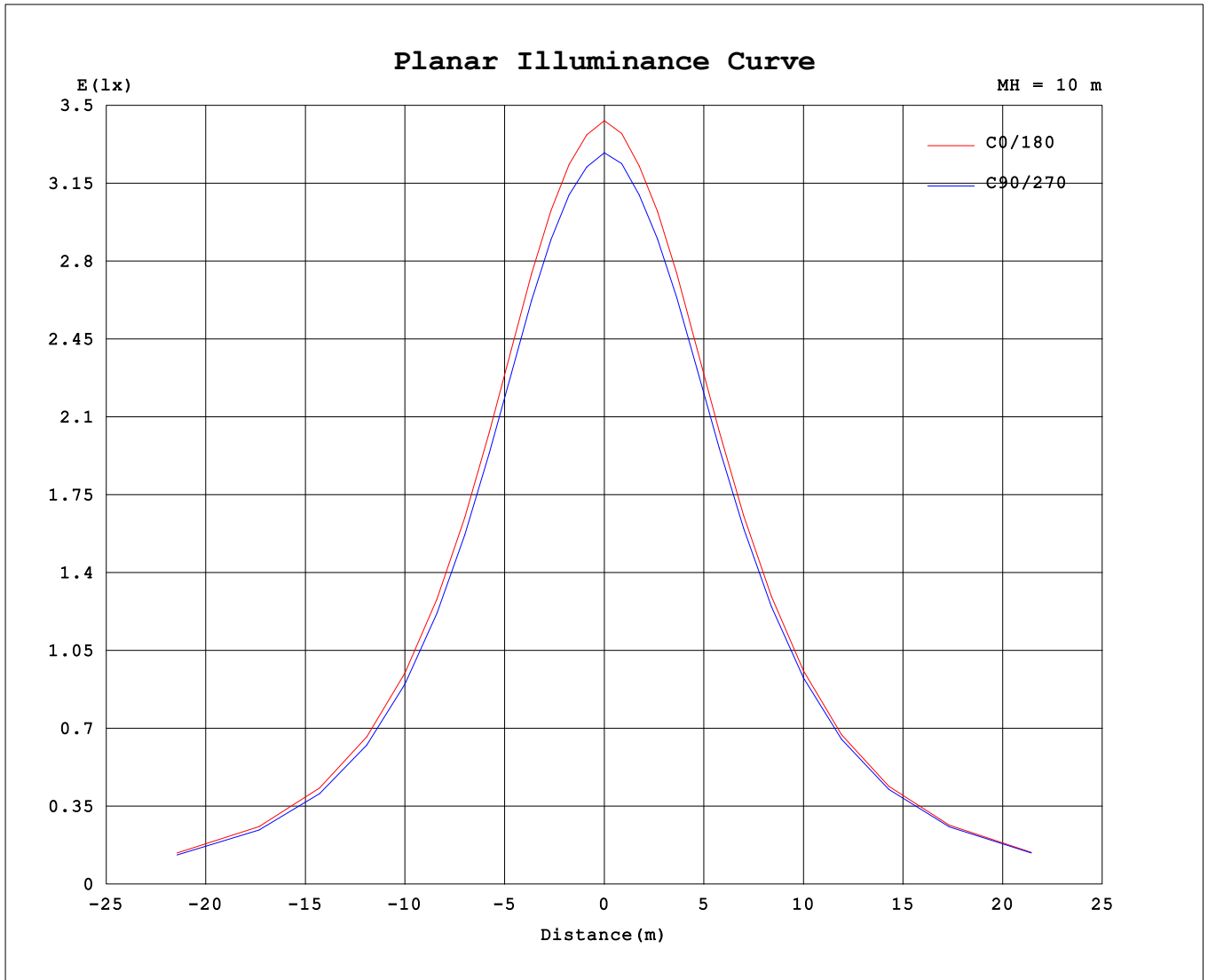
AvgL	cd/m2
L_0~180 (65) av	432
L_0~180 (75) av	550
L_0~180 (85) av	1239
L_90~270 (65) av	431
L_90~270 (75) av	548
L_90~270 (85) av	1233
L_45 (65) av	431
L_45 (75) av	549
L_45 (85) av	1237

Standard: GB/T 29293-2012

C Range: 0 - 360DEG
 C Interval: 22.5DEG
 Test Speed: HIGH
 Temperature:25.3℃
 Operators:DAMIN
 Test Date:2023-11-09

γ Range: 0 - 180DEG
 γ Interval: 5.0DEG
 Test System:EVERFINE GO-2000B_V1 SYSTEM V2.00.473
 Humidity:65.0%
 Test Distance:9.401m [K=1.0000]
 Remarks:

Planar Illuminance Curve



C Range: 0 - 360DEG
 C Interval: 22.5DEG
 Test Speed: HIGH
 Temperature: 25.3°C
 Operators: DAMIN
 Test Date: 2023-11-09

γ Range: 0 - 180DEG
 γ Interval: 5.0DEG
 Test System: EVERFINE GO-2000B_V1 SYSTEM V2.00.473
 Humidity: 65.0%
 Test Distance: 9.401m [K=1.0000]
 Remarks:

LUMINOUS DISTRIBUTION INTENSITY DATA

Test:U:220.35V I:0.1195A P:13.587W PF:0.5160 Freq:50.00Hz Lamp Flux:1577.18x1 lm		
NAME: 球泡	TYPE:	WEIGHT:
SPEC.:	DIM.:	SERIAL No.:
MFR.: EVERFINE	SUR.: 1	Shielding Angle:

Table--1

UNIT: cd

C (DEG) \ γ (DEG)	0	22.5	45	67.5	90	112.5	135	157.5	180	202.5	225	247.5	270	292.5	315	337.5			
0	332	332	332	332	332	332	332	332	332	332	332	332	332	332	332	332			
5	329	329	329	329	329	329	329	330	330	330	330	330	331	330	330	330			
10	327	328	327	327	327	327	327	327	327	326	326	327	327	327	327	328			
15	325	325	325	325	324	325	324	325	324	324	324	324	325	325	325	325			
20	320	320	319	319	319	319	319	319	320	319	320	320	321	320	321	320			
25	312	313	311	311	311	312	312	312	313	312	313	313	314	314	314	313			
30	302	303	301	301	301	302	301	303	303	303	304	304	305	305	305	304			
35	290	290	289	289	288	289	289	290	292	292	293	293	294	293	293	292			
40	276	276	274	274	274	274	275	277	278	278	279	279	280	280	279	278			
45	260	259	257	257	257	258	258	260	262	263	264	264	265	264	263	262			
50	242	241	239	239	238	240	240	243	245	245	247	247	247	247	246	244			
55	222	221	219	219	218	220	220	223	226	226	229	228	229	228	227	225			
60	201	201	198	198	197	199	200	203	206	207	209	208	209	207	206	204			
65	180	180	177	176	176	177	179	182	185	186	188	188	188	187	185	183			
70	160	159	157	156	155	157	158	161	164	165	168	167	168	166	165	162			
75	140	140	137	137	136	137	138	142	144	146	148	148	148	146	145	143			
80	122	122	119	119	118	119	120	123	126	128	130	129	129	128	127	125			
85	106	106	104	103	102	103	104	107	110	111	113	113	113	111	110	108			
90	91.7	91.4	89.5	89.0	88.4	89.4	90.3	92.8	95.1	96.3	98.0	97.8	97.8	96.5	95.4	93.7			
95	79.5	79.2	77.5	77.2	76.6	77.6	78.2	80.4	82.3	83.2	84.8	84.7	84.8	83.7	82.7	81.1			
100	69.2	69.0	67.7	67.4	66.8	67.6	68.2	70.0	71.6	72.5	73.8	73.8	73.8	72.9	72.1	70.7			
105	60.7	60.6	59.4	59.0	58.6	59.2	59.8	61.2	62.7	63.4	64.6	64.5	64.6	63.8	63.2	62.0			
110	53.5	53.4	52.2	51.9	51.6	52.2	52.6	53.8	55.1	55.7	56.7	56.6	56.7	56.1	55.5	54.6			
115	47.1	47.0	46.1	45.8	45.4	46.0	46.3	47.4	48.6	49.1	50.0	50.0	50.1	49.5	49.0	48.1			
120	41.3	41.3	40.3	40.1	39.8	40.4	40.6	41.6	42.6	43.1	44.0	43.9	44.1	43.5	43.1	42.2			
125	35.9	35.9	35.1	34.9	34.6	35.1	35.4	36.3	37.2	37.7	38.4	38.4	38.6	38.1	37.7	36.9			
130	31.1	31.0	30.3	30.1	29.9	30.3	30.6	31.4	32.3	32.6	33.4	33.4	33.5	33.1	32.7	32.0			
135	26.6	26.5	25.8	25.7	25.5	25.9	26.2	26.9	27.7	28.0	28.7	28.7	28.9	28.5	28.1	27.4			
140	22.5	22.4	21.7	21.6	21.4	21.8	22.1	22.7	23.5	23.8	24.4	24.4	24.6	24.3	23.9	23.2			
145	18.6	18.5	17.9	17.8	17.6	18.0	18.2	18.9	19.5	19.8	20.4	20.4	20.6	20.3	19.9	19.3			
150	15.0	14.8	14.3	14.2	14.1	14.4	14.7	15.2	15.9	16.2	16.6	16.7	16.8	16.6	16.2	15.6			
155	11.7	11.5	11.0	10.9	10.8	11.2	11.4	11.9	12.4	12.8	13.1	13.2	13.3	13.1	12.8	12.2			
160	8.70	8.49	8.07	7.97	7.92	8.24	8.46	8.88	9.33	9.65	9.97	10.0	10.1	9.96	9.67	9.19			
165	6.24	6.02	5.73	5.59	5.58	5.83	6.03	6.34	6.71	6.99	7.23	7.31	7.38	7.27	7.02	6.64			
170	4.54	4.35	4.21	4.09	4.05	4.21	4.36	4.51	4.76	5.00	5.11	5.24	5.26	5.25	5.05	4.82			
175	3.82	3.80	3.74	3.68	3.71	3.65	3.84	3.82	3.85	3.86	3.86	4.05	4.06	4.09	3.98	4.10			
180	3.56	3.63	3.57	3.60	3.58	3.59	3.58	3.58	3.65	3.59	3.64	3.60	3.62	3.60	3.61	3.60			

C Range: 0 - 360DEG
 C Interval: 22.5DEG
 Test Speed: HIGH
 Temperature:25.3℃
 Operators:DAMIN
 Test Date:2023-11-09

γ Range: 0 - 180DEG
 γ Interval: 5.0DEG
 Test System:EVERFINE GO-2000B_V1 SYSTEM V2.00.473
 Humidity:65.0%
 Test Distance:9.401m [K=1.0000]
 Remarks: