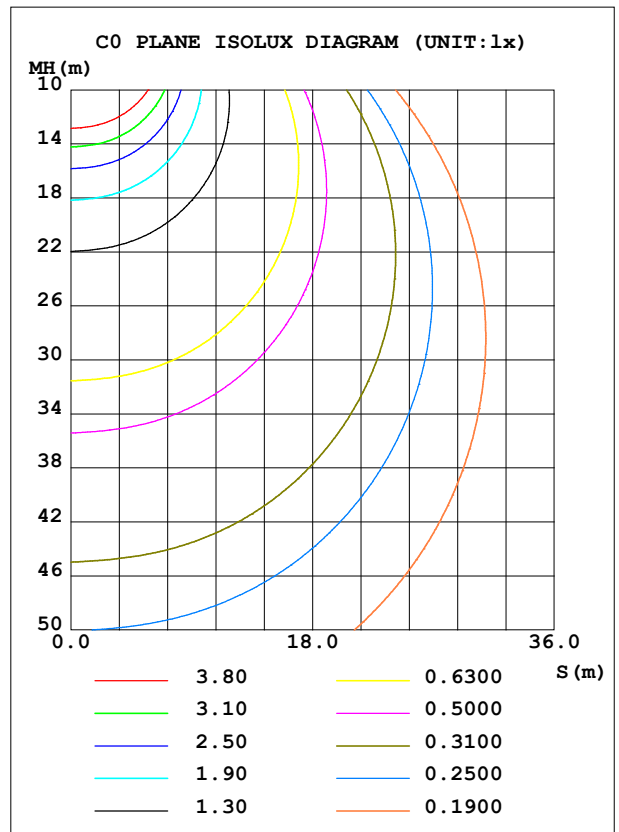
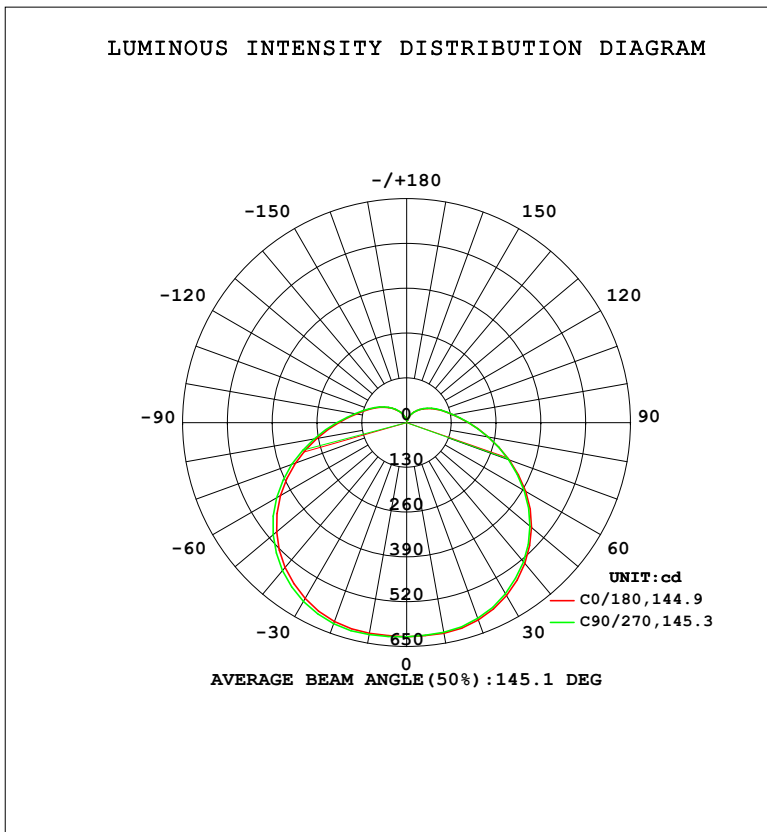


LUMINAIRE PHOTOMETRIC TEST REPORT

Test:U:220.26V I:0.2492A P:28.369W PF:0.5168 Freq:50.00Hz Lamp Flux:3158.85x1 lm		
NAME: 球泡	TYPE:	WEIGHT:
SPEC.:	DIM.:	SERIAL No.:
MFR.: EVERFINE	SUR.: 1	Shielding Angle:

DATA OF LAMP		PHOTOMETRIC DATA				Eff: 111.35 lm/W
MODEL	CF18	I _{max} (cd)	624.9	S/MH (C0/180)	1.42	
NOMINAL POWER (W)	30	LOR (%)	100.0	S/MH (C90/270)	1.44	
RATED VOLTAGE (V)	220	TOTAL FLUX (lm)	3158.9	η UP, DN (C0-180)	8.7, 39.9	
NOMINAL FLUX (lm)	3158.85	CIE CLASS	SEMI-D.	η UP, DN (C180-360)	9.3, 42.1	
LAMPS INSIDE	1	η up (%)	18.0	CIBSE SHR NOM	1.50	
TEST VOLTAGE (V)	219.5	η down (%)	82.0	CIBSE SHR MAX	1.55	



C Range: 0 - 360DEG
 C Interval: 22.5DEG
 Test Speed: HIGH
 Temperature: 25.3°C
 Operators: DAMIN
 Test Date: 2023-11-09

γ Range: 0 - 180DEG
 γ Interval: 5.0DEG
 Test System: EVERFINE GO-2000B_V1 SYSTEM V2.00.473
 Humidity: 65.0%
 Test Distance: 9.401m [K=1.0000]
 Remarks:

ZONAL FLUX DIAGRAM

ZONAL FLUX DIAGRAM:

γ	C0	C45	C90	C135	C180	C225	C270	C315	γ	Φ zone	Φ total	%lum, lamp
10	620.7	619.0	618.4	618.9	620.7	622.9	624.4	623.6	0- 10	59.29	59.29	1.88,1.88
20	609.5	604.9	604.5	608.1	613.8	619.3	621.3	617.1	10- 20	175.0	234.3	7.42,7.42
30	579.8	572.9	573.7	580.2	589.6	597.8	599.6	592.2	20- 30	277.5	511.8	16.2,16.2
40	534.1	526.1	527.3	536.2	549.0	558.9	561.0	550.4	30- 40	354.7	866.5	27.4,27.4
50	473.7	464.8	467.4	478.1	493.2	504.6	506.3	493.3	40- 50	398.3	1265	40,40
60	399.5	390.7	394.2	407.0	423.2	434.9	436.0	420.9	50- 60	403.3	1668	52.8,52.8
70	317.7	310.4	314.5	327.5	343.8	354.9	355.1	339.3	60- 70	370.2	2038	64.5,64.5
80	240.8	235.5	239.9	251.0	264.5	273.7	273.3	259.0	70- 80	310.0	2348	74.3,74.3
90	179.7	176.5	180.2	188.5	197.7	203.9	203.3	192.7	80- 90	241.5	2590	82,82
100	135.9	134.0	136.9	142.5	148.4	152.5	151.9	144.7	90-100	180.9	2771	87.7,87.7
110	106.1	104.9	107.0	111.0	114.9	117.5	117.0	112.2	100-110	134.0	2905	92,92
120	82.87	82.02	83.80	87.01	90.08	92.02	91.45	87.65	110-120	98.32	3003	95.1,95.1
130	63.12	62.31	63.86	66.58	69.13	70.57	69.96	66.91	120-130	68.89	3072	97.2,97.2
140	45.73	44.99	46.32	48.65	50.80	51.88	51.34	48.69	130-140	44.62	3117	98.7,98.7
150	30.42	29.70	30.76	32.74	34.59	35.50	34.92	32.74	140-150	25.59	3142	99.5,99.5
160	17.21	16.52	17.33	19.00	20.44	21.18	20.62	18.99	150-160	12.01	3154	99.9,99.9
170	8.165	7.814	8.129	8.948	9.865	10.25	9.895	8.951	160-170	3.972	3158	100,100
180	7.053	7.055	7.048	7.025	7.089	7.080	7.066	7.043	170-180	0.7417	3159	100,100
DEG	LUMINOUS INTENSITY:cd									UNIT:lm		

Conical surface Flux(90deg): 1062.5 lm

%lum = 33.6%

%lamp = 33.6%

Conical surface Flux(130deg): 1859.4 lm

%lum = 58.9%

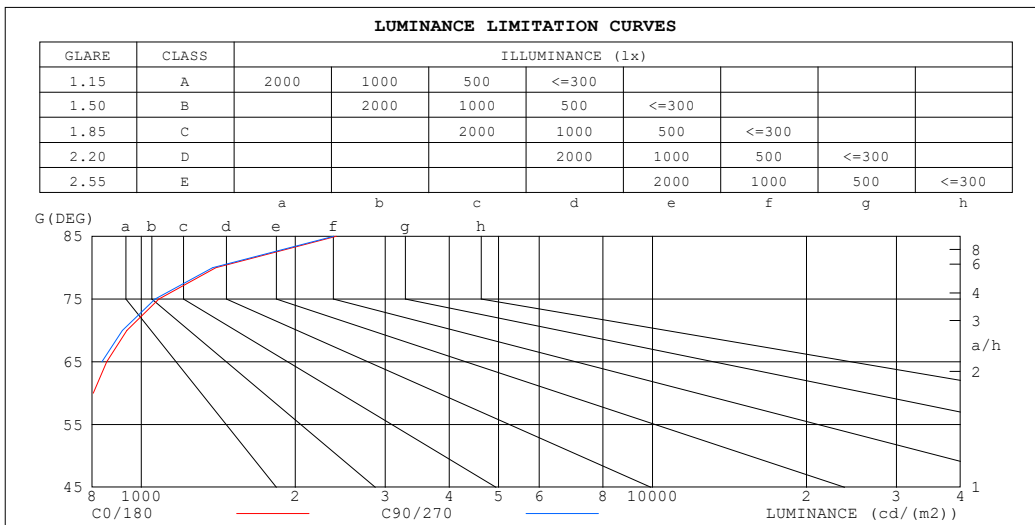
%lamp = 58.9%

C Range: 0 - 360DEG
 C Interval: 22.5DEG
 Test Speed: HIGH
 Temperature:25.3°C
 Operators:DAMIN
 Test Date:2023-11-09

γ Range: 0 - 180DEG
 γ Interval: 5.0DEG
 Test System:EVERFINE GO-2000B_V1 SYSTEM V2.00.473
 Humidity:65.0%
 Test Distance:9.401m [K=1.0000]
 Remarks:

LUMINANCE LIMITATION CURVES

Test:U:220.26V I:0.2492A P:28.369W PF:0.5168 Freq:50.00Hz Lamp Flux:3158.85x1 lm		
NAME: 球泡	TYPE:	WEIGHT:
SPEC.:	DIM.:	SERIAL No.:
MFR.: EVERFINE	SUR.: 1	Shielding Angle:



LUMINANCE cd/(m2)		
G (DEG)	C0/180	C90/270
85	2405	2378
80	1398	1379
75	1082	1064
70	937	918
65	855	837
60	806	787
55	770	753
50	743	726
45	721	704

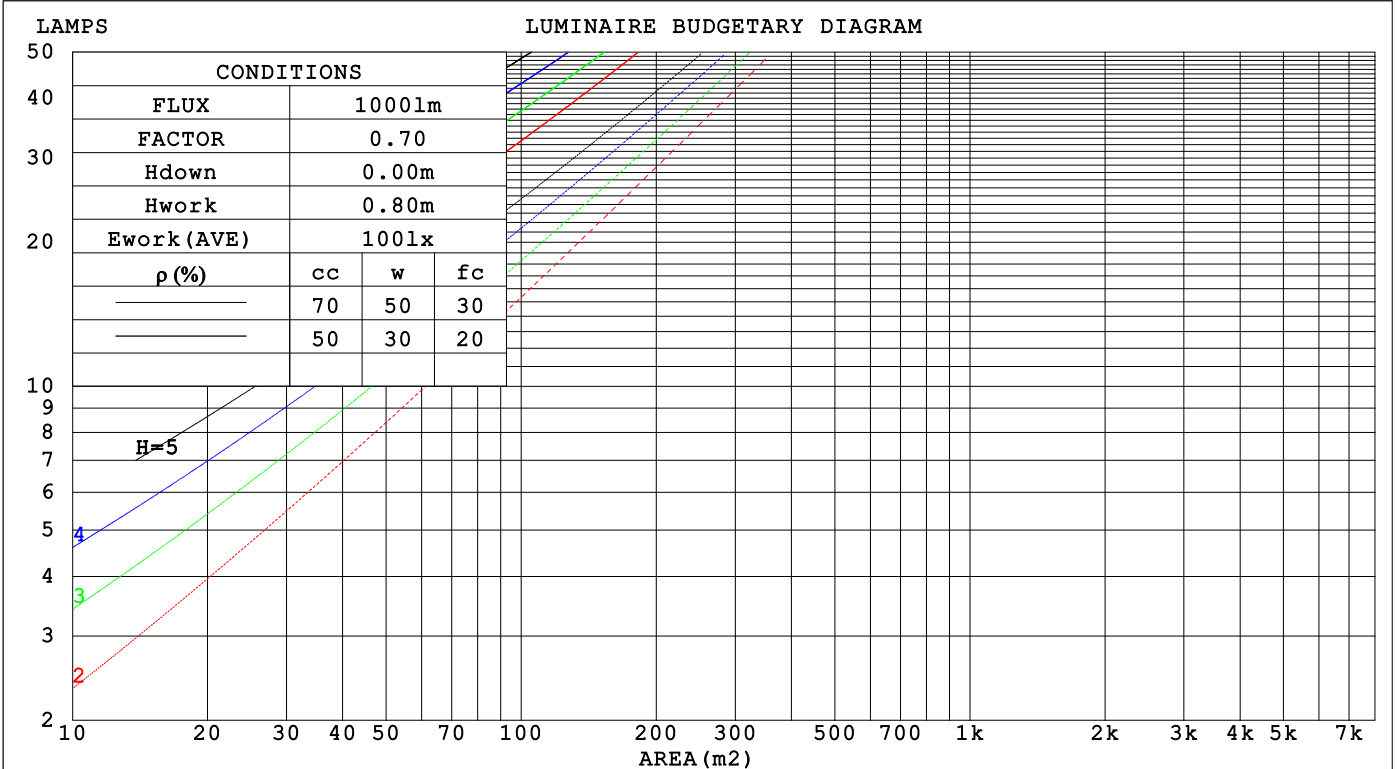
C Range: 0 - 360DEG
 C Interval: 22.5DEG
 Test Speed: HIGH
 Temperature:25.3°C
 Operators:DAMIN
 Test Date:2023-11-09

γ Range: 0 - 180DEG
 γ Interval: 5.0DEG
 Test System:EVERFINE GO-2000B_V1 SYSTEM V2.00.473
 Humidity:65.0%
 Test Distance:9.401m [K=1.0000]
 Remarks:

CU AND LUMINAIRE BUDGETARY ESTIMATE DIAGRAM

Test:U:220.26V I:0.2492A P:28.369W PF:0.5168 Freq:50.00Hz Lamp Flux:3158.85x1 lm		
NAME: 球泡	TYPE:	WEIGHT:
SPEC.:	DIM.:	SERIAL No.:
MFR.: EVERFINE	SUR.: 1	Shielding Angle:

ρcc	80%			70%			50%			30%			10%			0
ρw	50%	30%	10%	50%	30%	10%	50%	30%	10%	50%	30%	10%	50%	30%	10%	0
ρfc	20%			20%			20%			20%			20%			0
RCR	RCR:Room Cavity Ratio															
	Coefficients of Utilization(CU)															
0.0	1.15	1.15	1.15	1.10	1.10	1.10	1.01	1.01	1.01	.93	.93	.93	.85	.85	.85	.82
1.0	.95	.90	.85	.91	.86	.82	.84	.80	.76	.77	.73	.70	.70	.68	.65	.62
2.0	.81	.73	.67	.78	.71	.64	.71	.65	.60	.65	.60	.56	.60	.56	.52	.49
3.0	.70	.61	.54	.67	.59	.52	.62	.55	.49	.56	.51	.46	.52	.47	.43	.40
4.0	.62	.52	.45	.59	.50	.43	.54	.47	.41	.50	.43	.38	.45	.40	.36	.33
5.0	.55	.45	.38	.52	.44	.37	.48	.41	.35	.44	.38	.33	.41	.35	.31	.28
6.0	.49	.39	.33	.47	.38	.32	.43	.36	.30	.40	.33	.28	.37	.31	.27	.24
7.0	.44	.35	.28	.42	.34	.28	.39	.32	.26	.36	.30	.25	.33	.28	.23	.21
8.0	.40	.31	.25	.38	.30	.24	.36	.28	.23	.33	.27	.22	.30	.25	.21	.19
9.0	.36	.28	.22	.35	.27	.22	.33	.26	.21	.30	.24	.20	.28	.23	.19	.17
10.0	.33	.25	.20	.32	.25	.20	.30	.23	.19	.28	.22	.18	.26	.21	.17	.15



C Range: 0 - 360DEG
 C Interval: 22.5DEG
 Test Speed: HIGH
 Temperature:25.3°C
 Operators:DAMIN
 Test Date:2023-11-09

γ Range: 0 - 180DEG
 γ Interval: 5.0DEG
 Test System:EVERFINE GO-2000B_V1 SYSTEM V2.00.473
 Humidity:65.0%
 Test Distance:9.401m [K=1.0000]
 Remarks:

WEC AND CCEC

Test:U:220.26V I:0.2492A P:28.369W PF:0.5168 Freq:50.00Hz								
Lamp Flux:3158.85x1 lm								
NAME: 球泡			TYPE:			WEIGHT:		
SPEC.:			DIM.:			SERIAL No.:		
MFR.: EVERFINE			SUR.: 1			Shielding Angle:		

ρ_{CC}	80%			70%			50%			30%			10%			0
ρ_w	50%	30%	10%	50%	30%	10%	50%	30%	10%	50%	30%	10%	50%	30%	10%	0
ρ_{fc}	20%			20%			20%			20%			20%			0
RCR	RCR:Room Cavity Ratio						Wall Exitance Coefficients (WEC)									
0.0																
1.0	.390	.222	.070	.378	.215	.068	.354	.203	.065	.332	.191	.061	.312	.181	.058	
2.0	.338	.185	.057	.326	.180	.055	.305	.169	.053	.285	.160	.050	.266	.151	.047	
3.0	.300	.159	.048	.289	.155	.047	.270	.146	.044	.252	.138	.042	.235	.130	.040	
4.0	.269	.140	.041	.260	.136	.040	.242	.129	.038	.226	.121	.037	.211	.114	.035	
5.0	.245	.125	.036	.236	.121	.035	.220	.115	.034	.205	.108	.032	.191	.102	.031	
6.0	.224	.112	.032	.216	.109	.031	.202	.103	.030	.188	.098	.029	.175	.092	.027	
7.0	.206	.102	.029	.199	.099	.028	.186	.094	.027	.173	.089	.026	.162	.084	.025	
8.0	.191	.094	.026	.185	.091	.026	.173	.086	.025	.161	.082	.024	.150	.077	.022	
9.0	.178	.086	.024	.172	.084	.024	.161	.080	.023	.150	.075	.022	.140	.071	.021	
10.0	.167	.080	.022	.161	.078	.022	.151	.074	.021	.141	.070	.020	.132	.066	.019	

ρ_{CC}	80%			70%			50%			30%			10%			0
ρ_w	50%	30%	10%	50%	30%	10%	50%	30%	10%	50%	30%	10%	50%	30%	10%	0
ρ_{fc}	20%			20%			20%			20%			20%			0
RCR	RCR:Room Cavity Ratio						Ceiling Cavity Exitance Coefficients (CCEC)									
0.0	.328	.328	.328	.280	.280	.280	.191	.191	.191	.110	.110	.110	.035	.035	.035	
1.0	.324	.294	.266	.277	.252	.229	.190	.173	.159	.109	.100	.092	.035	.032	.030	
2.0	.318	.271	.232	.272	.233	.200	.186	.161	.140	.108	.094	.082	.034	.030	.027	
3.0	.310	.255	.210	.266	.220	.182	.183	.153	.128	.105	.089	.075	.034	.029	.025	
4.0	.303	.242	.196	.260	.209	.170	.179	.146	.120	.103	.085	.071	.033	.028	.023	
5.0	.295	.232	.186	.253	.201	.162	.174	.140	.114	.101	.082	.068	.033	.027	.022	
6.0	.287	.224	.179	.247	.194	.156	.170	.136	.110	.099	.080	.066	.032	.026	.022	
7.0	.280	.218	.174	.241	.189	.152	.167	.132	.108	.097	.078	.064	.031	.026	.021	
8.0	.274	.212	.170	.235	.184	.148	.163	.129	.105	.095	.076	.063	.031	.025	.021	
9.0	.267	.207	.167	.230	.180	.146	.159	.127	.104	.093	.075	.062	.030	.025	.020	
10.0	.261	.203	.165	.225	.177	.144	.156	.124	.102	.091	.073	.061	.030	.024	.020	

C Range: 0 - 360DEG
 C Interval: 22.5DEG
 Test Speed: HIGH
 Temperature:25.3°C
 Operators:DAMIN
 Test Date:2023-11-09

γ Range: 0 - 180DEG
 γ Interval: 5.0DEG
 Test System:EVERFINE GO-2000B_V1 SYSTEM V2.00.473
 Humidity:65.0%
 Test Distance:9.401m [K=1.0000]
 Remarks:

UGR(Unified Glare Rating) Table

Test:U:220.26V I:0.2492A P:28.369W PF:0.5168 Freq:50.00Hz										
Lamp Flux:3158.85x1 lm										
NAME: 球泡			TYPE:				WEIGHT:			
SPEC.:			DIM.:				SERIAL No.:			
MFR.: EVERFINE			SUR.: 1				Shielding Angle:			
ceiling/cavity	0.7	0.7	0.5	0.5	0.3	0.7	0.7	0.5	0.5	0.3
walls	0.5	0.3	0.5	0.3	0.3	0.5	0.3	0.5	0.3	0.3
working plane	0.2	0.2	0.2	0.2	0.2	0.2	0.2	0.2	0.2	0.2
Room dimensions	Viewed crosswise					Viewed endwise				
x = 2H y = 2H	6.8	8.2	7.3	8.7	9.3	6.7	8.1	7.2	8.6	9.2
3H	9.0	10.3	9.6	10.8	11.5	8.9	10.2	9.5	10.8	11.4
4H	10.2	11.4	10.8	12.0	12.6	10.1	11.3	10.7	11.9	12.5
6H	11.5	12.6	12.1	13.2	13.9	11.4	12.5	12.0	13.1	13.8
8H	12.2	13.3	12.8	13.9	14.6	12.1	13.2	12.7	13.8	14.5
12H	13.0	14.1	13.6	14.7	15.4	12.9	14.0	13.5	14.6	15.3
4H 2H	7.5	8.7	8.1	9.3	9.9	7.4	8.7	8.0	9.2	9.8
3H	9.9	11.0	10.5	11.6	12.3	9.9	10.9	10.5	11.5	12.2
4H	11.3	12.3	11.9	12.9	13.6	11.2	12.2	11.8	12.8	13.5
6H	12.8	13.6	13.4	14.3	15.0	12.7	13.6	13.3	14.2	15.0
8H	13.6	14.4	14.2	15.0	15.8	13.5	14.3	14.2	15.0	15.7
12H	14.5	15.3	15.2	15.9	16.7	14.4	15.2	15.1	15.9	16.6
8H 4H	11.8	12.6	12.5	13.3	14.0	11.7	12.6	12.4	13.2	14.0
6H	13.5	14.2	14.2	14.9	15.7	13.5	14.2	14.2	14.9	15.7
8H	14.5	15.1	15.2	15.9	16.7	14.5	15.1	15.2	15.8	16.6
12H	15.7	16.2	16.4	17.0	17.8	15.6	16.2	16.4	16.9	17.7
12H 4H	11.9	12.7	12.6	13.3	14.1	11.8	12.6	12.5	13.3	14.1
6H	13.7	14.4	14.4	15.1	15.9	13.7	14.3	14.4	15.0	15.8
8H	14.8	15.4	15.6	16.1	17.0	14.8	15.3	15.5	16.1	16.9
Variations with the observer position at spacings(CIE Pub.117):										
S = 1.0H	+ 0.1 / - 0.1					+ 0.1 / - 0.1				
1.5H	+ 0.2 / - 0.3					+ 0.2 / - 0.3				
2.0H	+ 0.2 / - 0.3					+ 0.2 / - 0.4				

CIE Pub.117, 3159 lm Total Lamp Luminous Flux Correct (8log(F/F0) = 4.0)
Area: 1 m2

C Range: 0 - 360DEG
C Interval: 22.5DEG
Test Speed: HIGH
Temperature:25.3°C
Operators:DAMIN
Test Date:2023-11-09

γ Range: 0 - 180DEG
γ Interval: 5.0DEG
Test System:EVERFINE GO-2000B_V1 SYSTEM V2.00.473
Humidity:65.0%
Test Distance:9.401m [K=1.0000]
Remarks:

UTILIZATION FACTORS TABLE

Test:U:220.26V I:0.2492A P:28.369W PF:0.5168 Freq:50.00Hz Lamp Flux:3158.85x1 lm		
NAME: 球泡	TYPE:	WEIGHT:
SPEC.:	DIM.:	SERIAL No.:
MFR.: EVERFINE	SUR.: 1	Shielding Angle:

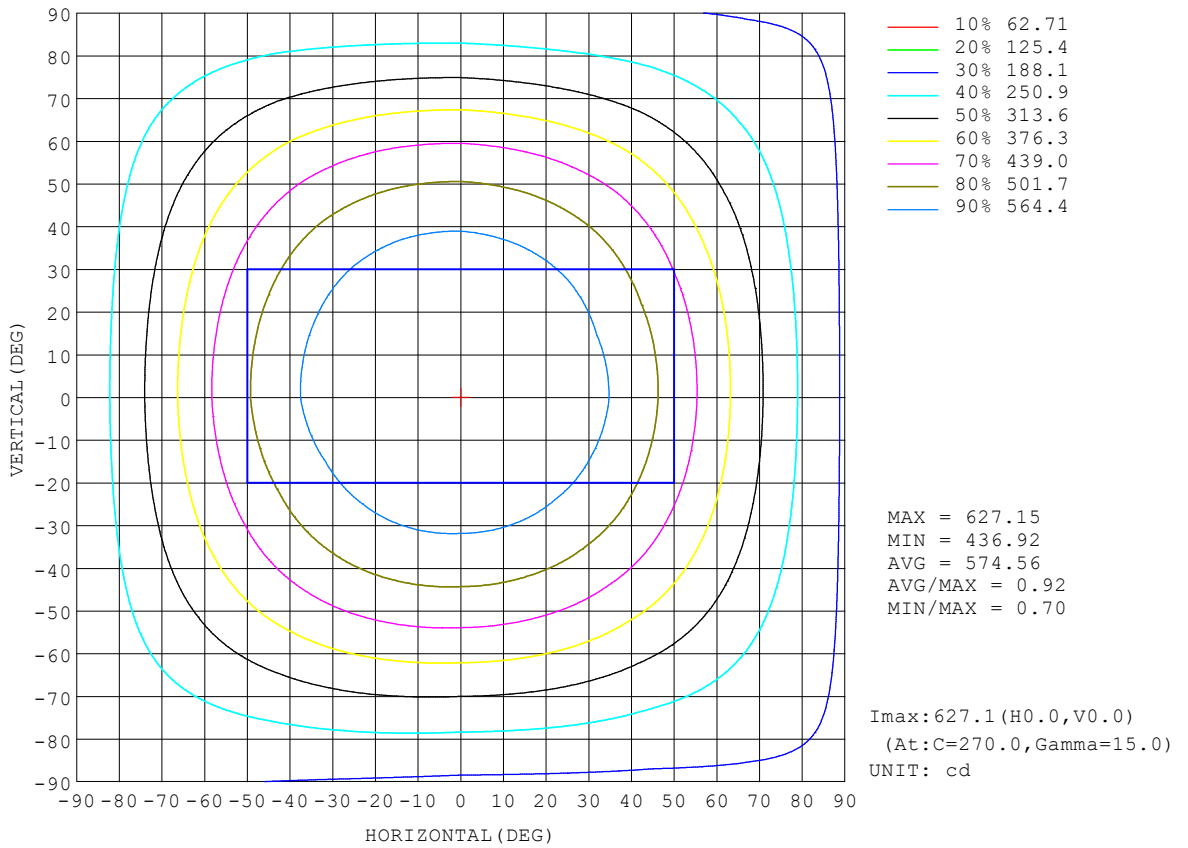
REFLECTANCE										
Ceiling	0.8	0.8	0.8	0.7	0.7	0.7	0.5	0.5	0.5	0
Walls	0.7	0.5	0.3	0.7	0.5	0.3	0.7	0.5	0.3	0
Working plane	0.2	0.2	0.2	0.2	0.2	0.2	0.2	0.2	0.2	0
ROOM INDEX	UTILIZATION FACTORS (PERCENT) $k(RI) \times RCR = 5$									
k = 0.60	47	35	27	46	34	27	44	33	26	20
0.80	56	43	35	55	42	35	52	41	34	26
1.00	64	51	42	62	50	42	58	50	41	32
1.25	71	58	49	69	57	49	64	54	47	37
1.50	76	64	55	73	62	54	69	59	52	41
2.00	83	72	64	80	70	62	75	66	60	48
2.50	88	78	70	85	75	68	78	71	64	52
3.00	92	82	75	88	80	73	82	75	69	55
4.00	97	89	82	93	85	79	86	80	75	60
5.00	100	93	87	96	89	84	88	83	79	63
ROOM INDEX	UF(total)									Direct
According to DIN EN 13032-2 2004			Suspended				SHRNOM = 1.25			

C Range: 0 - 360DEG
 C Interval: 22.5DEG
 Test Speed: HIGH
 Temperature:25.3°C
 Operators:DAMIN
 Test Date:2023-11-09

γ Range: 0 - 180DEG
 γ Interval: 5.0DEG
 Test System:EVERFINE GO-2000B_V1 SYSTEM V2.00.473
 Humidity:65.0%
 Test Distance:9.401m [K=1.0000]
 Remarks:

ISOCANDELA DIAGRAM

Test:U:220.26V I:0.2492A P:28.369W PF:0.5168 Freq:50.00Hz Lamp Flux:3158.85x1 lm		
NAME: 球泡	TYPE:	WEIGHT:
SPEC.:	DIM.:	SERIAL No.:
MFR.: EVERFINE	SUR.: 1	Shielding Angle:

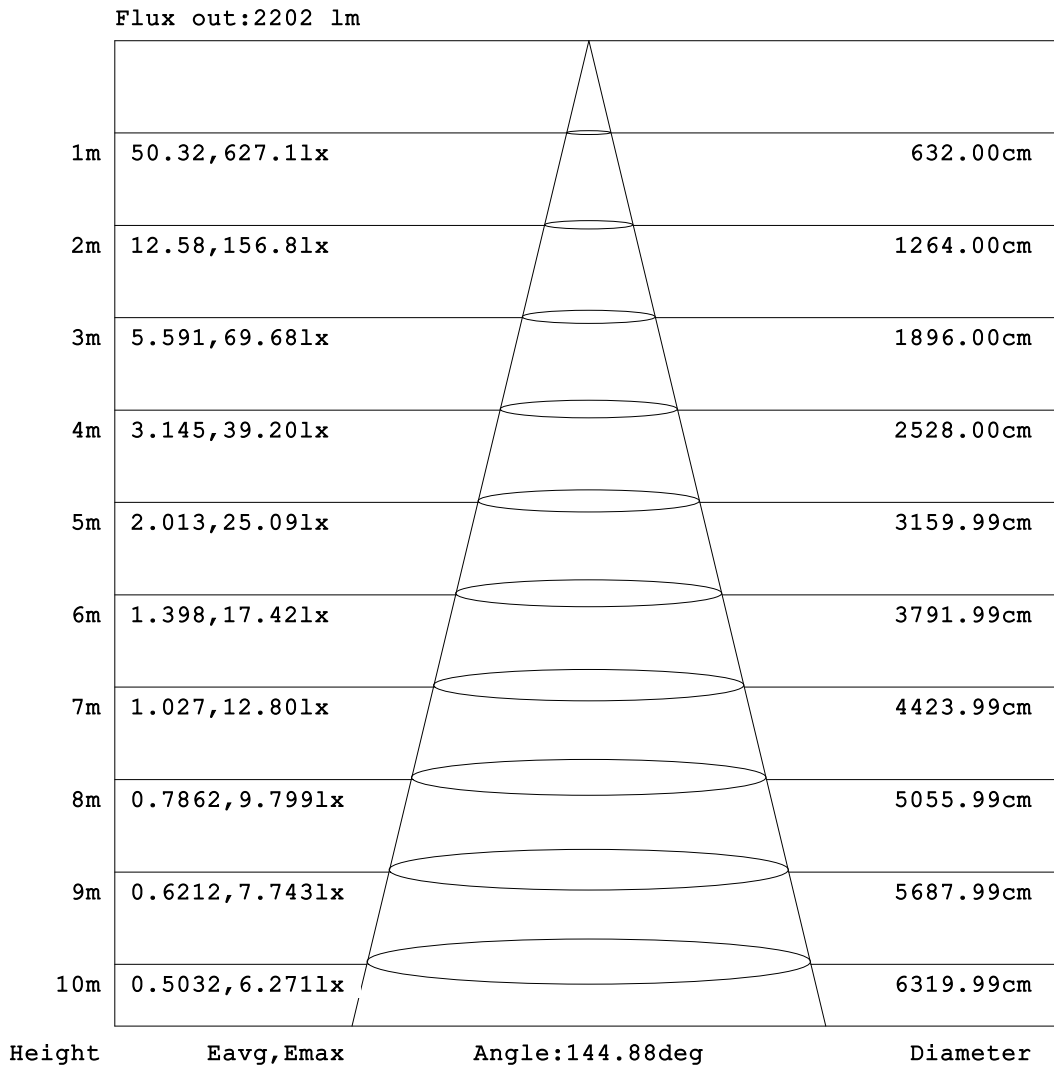


C Range: 0 - 360DEG
 C Interval: 22.5DEG
 Test Speed: HIGH
 Temperature: 25.3°C
 Operators: DAMIN
 Test Date: 2023-11-09

γ Range: 0 - 180DEG
 γ Interval: 5.0DEG
 Test System: EVERFINE GO-2000B_V1 SYSTEM V2.00.473
 Humidity: 65.0%
 Test Distance: 9.401m [K=1.0000]
 Remarks:

AAI Figure

Test:U:220.26V I:0.2492A P:28.369W PF:0.5168 Freq:50.00Hz Lamp Flux:3158.85x1 lm		
NAME: 球泡	TYPE:	WEIGHT:
SPEC.:	DIM.:	SERIAL No.:
MFR.: EVERFINE	SUR.: 1	Shielding Angle:



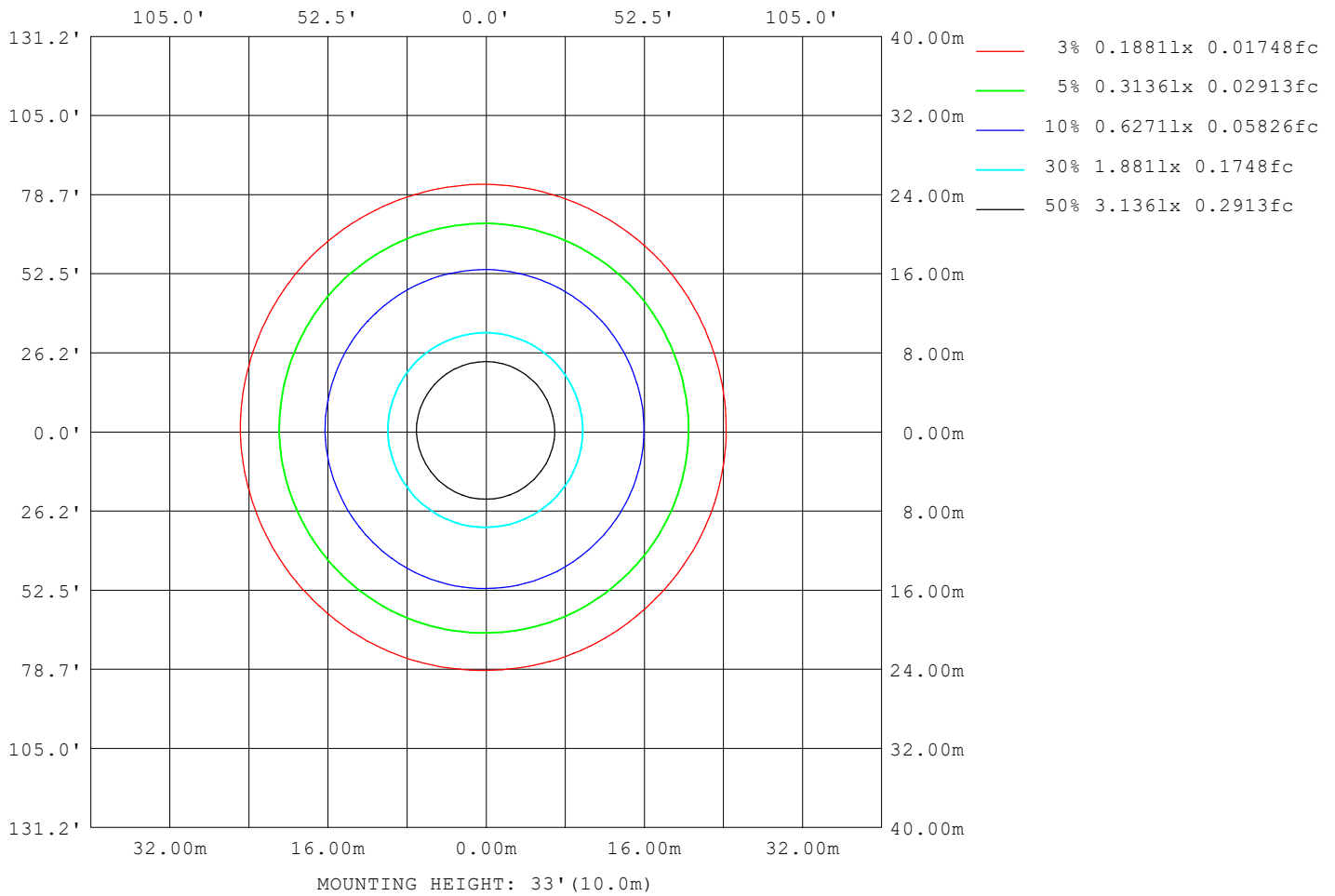
Note:The Curves indicate the illuminated area and the average illumination when the luminaire is at different distance.

C Range: 0 - 360DEG
C Interval: 22.5DEG
Test Speed: HIGH
Temperature:25.3°C
Operators:DAMIN
Test Date:2023-11-09

γ Range: 0 - 180DEG
γ Interval: 5.0DEG
Test System:EVERFINE GO-2000B_V1 SYSTEM V2.00.473
Humidity:65.0%
Test Distance:9.401m [K=1.0000]
Remarks:

ISOLUX DIAGRAM

Test:U:220.26V I:0.2492A P:28.369W PF:0.5168 Freq:50.00Hz Lamp Flux:3158.85x1 lm		
NAME: 球泡	TYPE:	WEIGHT:
SPEC.:	DIM.:	SERIAL No.:
MFR.: EVERFINE	SUR.: 1	Shielding Angle:



C Range: 0 - 360DEG
 C Interval: 22.5DEG
 Test Speed: HIGH
 Temperature:25.3°C
 Operators:DAMIN
 Test Date:2023-11-09

γ Range: 0 - 180DEG
 γ Interval: 5.0DEG
 Test System:EVERFINE GO-2000B_V1 SYSTEM V2.00.473
 Humidity:65.0%
 Test Distance:9.401m [K=1.0000]
 Remarks:

LED Avg.L Report

Test:U:220.26V I:0.2492A P:28.369W PF:0.5168 Freq:50.00Hz Lamp Flux:3158.85x1 lm		
NAME: 球泡	TYPE:	WEIGHT:
SPEC.:	DIM.:	SERIAL No.:
MFR.: EVERFINE	SUR.: 1	Shielding Angle:

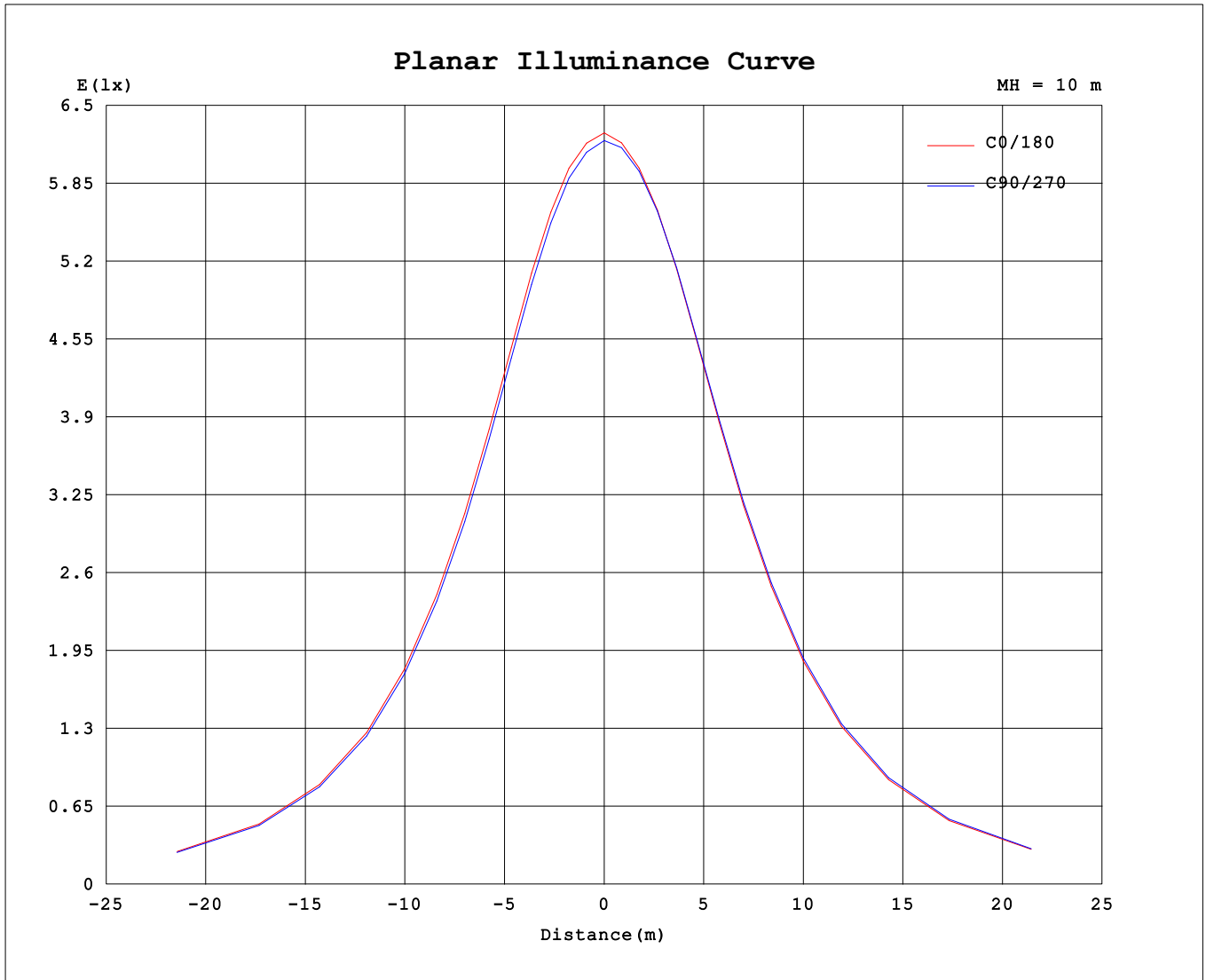
AvgL	cd/m2
L_0~180 (65) av	878
L_0~180 (75) av	1123
L_0~180 (85) av	2506
L_90~270 (65) av	888
L_90~270 (75) av	1138
L_90~270 (85) av	2546
L_45 (65) av	884
L_45 (75) av	1131
L_45 (85) av	2529

Standard: GB/T 29293-2012

C Range: 0 - 360DEG
 C Interval: 22.5DEG
 Test Speed: HIGH
 Temperature:25.3℃
 Operators:DAMIN
 Test Date:2023-11-09

γ Range: 0 - 180DEG
 γ Interval: 5.0DEG
 Test System:EVERFINE GO-2000B_V1 SYSTEM V2.00.473
 Humidity:65.0%
 Test Distance:9.401m [K=1.0000]
 Remarks:

Planar Illuminance Curve



C Range: 0 - 360DEG
 C Interval: 22.5DEG
 Test Speed: HIGH
 Temperature: 25.3°C
 Operators: DAMIN
 Test Date: 2023-11-09

γ Range: 0 - 180DEG
 γ Interval: 5.0DEG
 Test System: EVERFINE GO-2000B_V1 SYSTEM V2.00.473
 Humidity: 65.0%
 Test Distance: 9.401m [K=1.0000]
 Remarks:

LUMINOUS DISTRIBUTION INTENSITY DATA

Test:U:220.26V I:0.2492A P:28.369W PF:0.5168 Freq:50.00Hz Lamp Flux:3158.85x1 lm		
NAME: 球泡	TYPE:	WEIGHT:
SPEC.:	DIM.:	SERIAL No.:
MFR.: EVERFINE	SUR.: 1	Shielding Angle:

Table--1

UNIT: cd

C (DEG) \ γ (DEG)	0	22.5	45	67.5	90	112.5	135	157.5	180	202.5	225	247.5	270	292.5	315	337.5			
0	622	622	622	622	622	622	622	622	622	622	622	622	622	622	622	622			
5	621	621	620	620	619	619	620	620	621	622	623	623	623	622	622	621			
10	621	620	619	618	618	619	619	620	621	622	623	624	624	624	624	622			
15	617	616	614	613	614	615	616	618	619	621	623	624	625	624	622	620			
20	610	607	605	604	604	606	608	611	614	617	619	621	621	619	617	614			
25	597	594	591	591	591	594	596	600	604	607	611	612	612	611	607	602			
30	580	576	573	573	574	577	580	585	590	594	598	599	600	597	592	586			
35	559	555	552	551	552	556	560	566	571	576	580	582	582	579	573	566			
40	534	529	526	526	527	532	536	543	549	554	559	561	561	557	550	542			
45	506	501	497	497	499	504	509	516	523	528	534	536	535	531	524	515			
50	474	468	465	465	467	473	478	486	493	498	505	507	506	501	493	483			
55	438	433	429	430	433	438	444	452	460	465	472	474	473	467	459	448			
60	400	394	391	392	394	401	407	416	423	429	435	437	436	429	421	409			
65	359	355	351	353	354	362	368	377	384	389	396	397	396	389	380	369			
70	318	314	310	313	314	322	328	337	344	348	355	355	355	347	339	327			
75	278	275	271	274	276	283	288	297	303	307	313	314	313	306	298	287			
80	241	238	236	238	240	246	251	259	265	268	274	274	273	266	259	249			
85	208	206	204	206	208	213	218	224	229	232	237	237	236	230	224	215			
90	180	178	176	178	180	185	189	194	198	200	204	204	203	198	193	185			
95	156	154	153	155	157	160	163	168	171	173	176	176	175	171	166	161			
100	136	135	134	135	137	140	142	146	148	150	152	153	152	148	145	140			
105	120	119	118	119	121	123	125	128	130	131	133	133	133	130	127	123			
110	106	105	105	106	107	109	111	113	115	116	118	118	117	115	112	109			
115	93.9	93.2	93.0	94.0	94.9	96.9	98.5	100	102	103	104	104	103	102	99.3	96.4			
120	82.9	82.3	82.0	82.8	83.8	85.6	87.0	88.9	90.1	90.8	92.0	91.8	91.5	89.6	87.6	85.1			
125	72.6	72.1	71.8	72.6	73.5	75.1	76.4	78.1	79.2	79.9	80.8	80.6	80.3	78.6	76.8	74.6			
130	63.1	62.6	62.3	63.0	63.9	65.4	66.6	68.1	69.1	69.7	70.6	70.3	70.0	68.5	66.9	64.8			
135	54.2	53.6	53.4	54.1	54.8	56.2	57.3	58.7	59.7	60.2	61.0	60.7	60.4	58.9	57.5	55.7			
140	45.7	45.3	45.0	45.6	46.3	47.6	48.7	49.9	50.8	51.3	51.9	51.7	51.3	50.1	48.7	47.1			
145	37.9	37.4	37.1	37.7	38.3	39.5	40.4	41.6	42.4	42.9	43.5	43.2	42.9	41.7	40.5	39.0			
150	30.4	29.9	29.7	30.1	30.8	31.8	32.7	33.9	34.6	35.0	35.5	35.2	34.9	33.8	32.7	31.4			
155	23.5	23.0	22.8	23.1	23.7	24.7	25.6	26.5	27.2	27.7	28.0	27.9	27.5	26.5	25.5	24.4			
160	17.2	16.8	16.5	16.9	17.3	18.2	19.0	19.9	20.4	20.9	21.2	21.0	20.6	19.8	19.0	17.9			
165	11.9	11.6	11.4	11.6	12.0	12.6	13.2	14.0	14.6	14.8	15.1	14.9	14.7	13.9	13.3	12.5			
170	8.17	7.92	7.81	7.88	8.13	8.50	8.95	9.45	9.86	10.1	10.2	10.1	9.89	9.42	8.95	8.45			
175	6.89	6.95	6.89	6.96	6.91	6.94	6.94	6.97	7.17	7.28	7.27	7.27	7.13	7.06	6.97	6.96			
180	7.05	7.09	7.06	7.07	7.05	7.06	7.02	7.04	7.09	7.06	7.08	7.05	7.07	7.04	7.04	7.03			

C Range: 0 - 360DEG
 C Interval: 22.5DEG
 Test Speed: HIGH
 Temperature:25.3℃
 Operators:DAMIN
 Test Date:2023-11-09

γ Range: 0 - 180DEG
 γ Interval: 5.0DEG
 Test System:EVERFINE GO-2000B_V1 SYSTEM V2.00.473
 Humidity:65.0%
 Test Distance:9.401m [K=1.0000]
 Remarks: