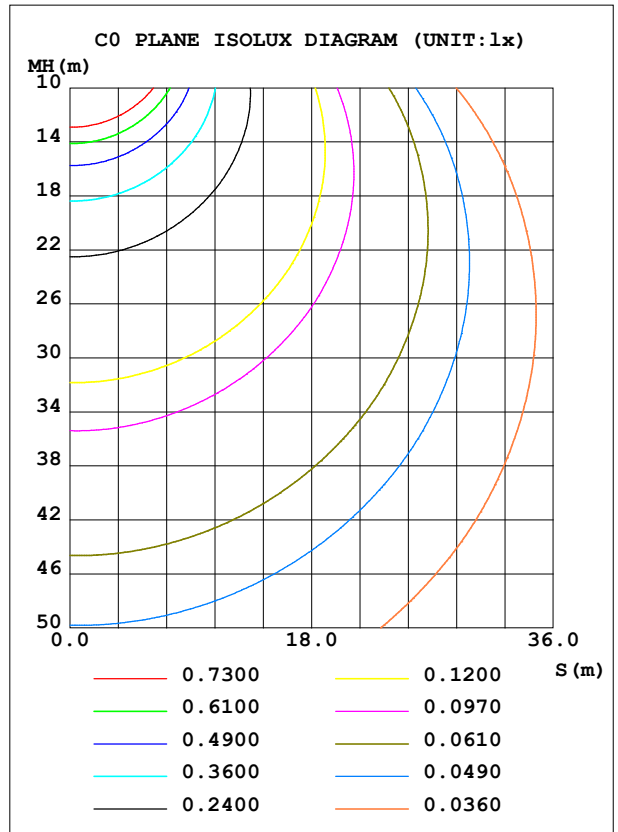
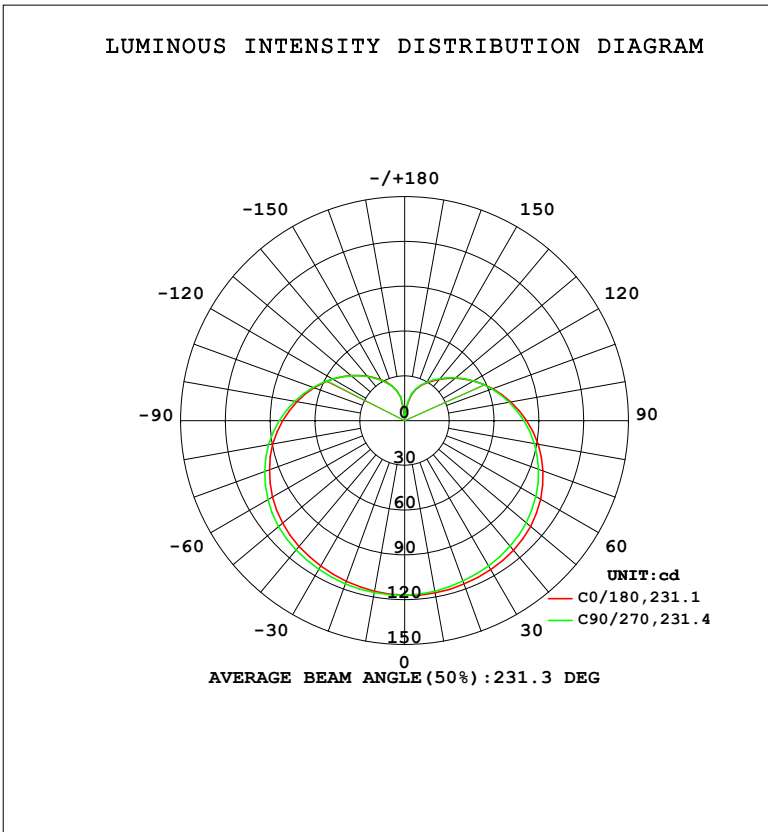


LUMINAIRE PHOTOMETRIC TEST REPORT

Test:U:220.33V I:0.0762A P:9.0394W PF:0.5381 Freq:50.00Hz Lamp Flux:975.598x1 lm		
NAME: 球泡	TYPE:	WEIGHT:
SPEC.:	DIM.:	SERIAL No.:
MFR.: EVERFINE	SUR.: 1	Shielding Angle:

DATA OF LAMP		PHOTOMETRIC DATA				Eff: 107.93 lm/W
MODEL	A65	I <sub>max</sub> (cd)	117.4	S/MH (C0/180)	1.46	
NOMINAL POWER (W)	9	LOR (%)	100.0	S/MH (C90/270)	1.50	
RATED VOLTAGE (V)	220	TOTAL FLUX (lm)	975.60	η UP, DN (C0-180)	16.8, 32.6	
NOMINAL FLUX (lm)	975.598	CIE CLASS	SEMI-D.	η UP, DN (C180-360)	17.4, 33.2	
LAMPS INSIDE	1	η up (%)	34.2	CIBSE SHR NOM	1.75	
TEST VOLTAGE (V)	219.5	η down (%)	65.8	CIBSE SHR MAX	1.75	



C Range: 0 - 360DEG  
 C Interval: 22.5DEG  
 Test Speed: HIGH  
 Temperature: 25.3°C  
 Operators: DAMIN  
 Test Date: 2023-11-09

γ Range: 0 - 180DEG  
 γ Interval: 5.0DEG  
 Test System: EVERFINE GO-2000B\_V1 SYSTEM V2.00.473  
 Humidity: 65.0%  
 Test Distance: 9.401m [K=1.0000]  
 Remarks:

ZONAL FLUX DIAGRAM

ZONAL FLUX DIAGRAM:

$\gamma$	C0	C45	C90	C135	C180	C225	C270	C315	$\gamma$	$\Phi$ zone	$\Phi$ total	%lum,lamp
10	117.2	116.6	116.1	115.8	116.1	116.6	117.1	117.4	0- 10	11.15	11.15	1.14,1.14
20	116.5	115.5	114.4	114.0	114.6	115.3	116.3	116.9	10- 20	32.88	44.03	4.51,4.51
30	115.3	113.8	112.4	111.8	112.4	113.6	115.0	115.9	20- 30	53.04	97.07	9.95,9.95
40	113.4	111.5	109.9	109.3	110.1	111.4	113.3	114.4	30- 40	70.82	167.9	17.2,17.2
50	110.2	108.1	106.4	105.9	106.8	108.2	110.4	111.5	40- 50	85.26	253.2	25.9,25.9
60	105.2	103.0	101.6	101.3	102.3	103.7	105.8	106.9	50- 60	95.22	348.4	35.7,35.7
70	98.62	96.60	95.44	95.44	96.46	97.90	99.87	100.7	60- 70	100.00	448.4	46,46
80	90.76	88.92	88.18	88.52	89.68	90.86	92.48	93.07	70- 80	99.48	547.9	56.2,56.2
90	81.85	80.30	79.97	80.68	81.76	82.77	84.02	84.20	80- 90	94.02	641.9	65.8,65.8
100	72.41	71.18	71.23	72.25	73.39	74.09	74.89	74.74	90-100	84.58	726.5	74.5,74.5
110	62.77	61.91	62.32	63.47	64.59	65.06	65.45	64.99	100-110	72.42	798.9	81.9,81.9
120	53.29	52.73	53.38	54.62	55.72	56.02	56.03	55.34	110-120	58.83	857.7	87.9,87.9
130	44.40	44.04	44.83	46.05	47.12	47.19	46.99	46.13	120-130	45.11	902.8	92.5,92.5
140	36.27	36.10	36.89	38.01	38.96	39.00	38.62	37.71	130-140	32.38	935.2	95.9,95.9
150	29.32	29.23	29.92	30.89	31.75	31.67	31.25	30.43	140-150	21.46	956.7	98.1,98.1
160	22.37	22.37	22.97	23.94	24.83	24.87	24.40	23.55	150-160	12.65	969.3	99.4,99.4
170	11.55	11.29	12.62	14.24	15.91	15.96	15.82	14.79	160-170	5.573	974.9	99.9,99.9
180	1.409	1.416	1.416	1.420	1.461	1.452	1.441	1.432	170-180	0.7204	975.6	100,100
DEG	LUMINOUS INTENSITY:cd									UNIT:lm		

Conical surface Flux(90deg): 208.97 lm

%lum = 21.4%

%lamp = 21.4%

Conical surface Flux(130deg): 398.11 lm

%lum = 40.8%

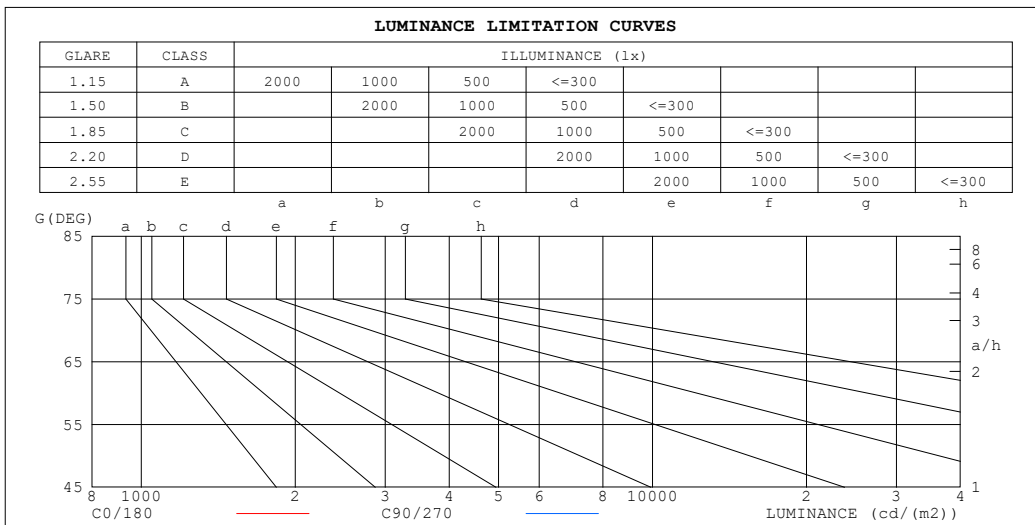
%lamp = 40.8%

C Range: 0 - 360DEG  
 C Interval: 22.5DEG  
 Test Speed: HIGH  
 Temperature:25.3°C  
 Operators:DAMIN  
 Test Date:2023-11-09

$\gamma$  Range: 0 - 180DEG  
 $\gamma$  Interval: 5.0DEG  
 Test System:EVERFINE GO-2000B\_V1 SYSTEM V2.00.473  
 Humidity:65.0%  
 Test Distance:9.401m [K=1.0000]  
 Remarks:

**LUMINANCE LIMITATION CURVES**

Test:U:220.33V I:0.0762A P:9.0394W PF:0.5381 Freq:50.00Hz Lamp Flux:975.598x1 lm		
NAME: 球泡	TYPE:	WEIGHT:
SPEC.:	DIM.:	SERIAL No.:
MFR.: EVERFINE	SUR.: 1	Shielding Angle:



LUMINANCE cd/(m2)		
G (DEG)	C0/180	C90/270
85	1030	956
80	543	503
75	381	352
70	299	276
65	251	231
60	218	201
55	195	180
50	178	164
45	164	152

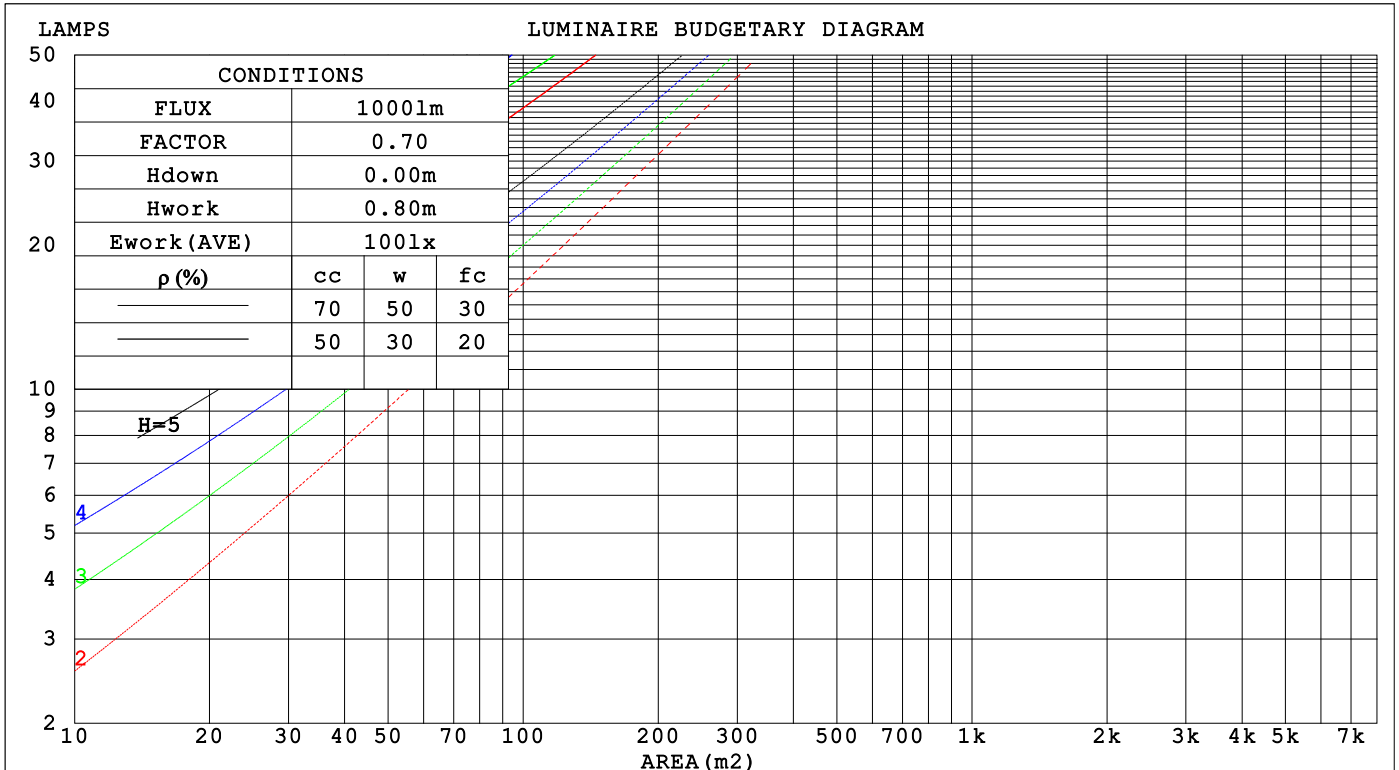
C Range: 0 - 360DEG  
 C Interval: 22.5DEG  
 Test Speed: HIGH  
 Temperature:25.3°C  
 Operators:DAMIN  
 Test Date:2023-11-09

γ Range: 0 - 180DEG  
 γ Interval: 5.0DEG  
 Test System:EVERFINE GO-2000B\_V1 SYSTEM V2.00.473  
 Humidity:65.0%  
 Test Distance:9.401m [K=1.0000]  
 Remarks:

CU AND LUMINAIRE BUDGETARY ESTIMATE DIAGRAM

Test:U:220.33V I:0.0762A P:9.0394W PF:0.5381 Freq:50.00Hz Lamp Flux:975.598x1 lm		
NAME: 球泡	TYPE:	WEIGHT:
SPEC.:	DIM.:	SERIAL No.:
MFR.: EVERFINE	SUR.: 1	Shielding Angle:

pcc	80%			70%			50%			30%			10%			0
pw	50%	30%	10%	50%	30%	10%	50%	30%	10%	50%	30%	10%	50%	30%	10%	0
pfc	20%			20%			20%			20%			20%			0
RCR	RCR:Room Cavity Ratio						Coefficients of Utilization(CU)									
0.0	1.11	1.11	1.11	1.04	1.04	1.04	.92	.92	.92	.81	.81	.81	.71	.71	.71	.66
1.0	.90	.84	.79	.84	.79	.75	.74	.70	.66	.64	.61	.58	.55	.53	.50	.46
2.0	.76	.68	.61	.71	.64	.58	.62	.56	.51	.54	.49	.45	.46	.42	.39	.35
3.0	.66	.56	.49	.61	.53	.46	.53	.47	.41	.46	.41	.36	.39	.35	.31	.27
4.0	.57	.48	.40	.54	.45	.38	.47	.40	.34	.40	.34	.30	.34	.30	.26	.22
5.0	.50	.41	.34	.47	.39	.32	.41	.34	.29	.36	.30	.25	.30	.26	.22	.19
6.0	.45	.36	.29	.42	.34	.27	.37	.30	.24	.32	.26	.22	.27	.22	.19	.16
7.0	.40	.31	.25	.38	.30	.24	.33	.26	.21	.29	.23	.19	.25	.20	.16	.14
8.0	.37	.28	.22	.34	.26	.21	.30	.23	.19	.26	.21	.16	.23	.18	.14	.12
9.0	.33	.25	.19	.31	.24	.18	.28	.21	.16	.24	.19	.15	.21	.16	.13	.11
10.0	.30	.22	.17	.29	.21	.16	.25	.19	.15	.22	.17	.13	.19	.15	.11	.09



C Range: 0 - 360DEG  
 C Interval: 22.5DEG  
 Test Speed: HIGH  
 Temperature:25.3°C  
 Operators:DAMIN  
 Test Date:2023-11-09

γ Range: 0 - 180DEG  
 γ Interval: 5.0DEG  
 Test System:EVERFINE GO-2000B\_V1 SYSTEM V2.00.473  
 Humidity:65.0%  
 Test Distance:9.401m [K=1.0000]  
 Remarks:

WEC AND CCEC

Test:U:220.33V I:0.0762A P:9.0394W PF:0.5381 Freq:50.00Hz																	
Lamp Flux:975.598x1 lm																	
NAME: 球泡						TYPE:						WEIGHT:					
SPEC.:						DIM.:						SERIAL No.:					
MFR.: EVERFINE						SUR.: 1						Shielding Angle:					

ρ <sub>CC</sub>	80%			70%			50%			30%			10%			0		
ρ <sub>w</sub>	50%	30%	10%	50%	30%	10%	50%	30%	10%	50%	30%	10%	50%	30%	10%	0		
ρ <sub>fc</sub>	20%			20%			20%			20%			20%			0		
RCR	RCR:Room Cavity Ratio									Wall Exitance Coefficients(WEC)								
0.0																		
1.0	.415	.236	.075	.397	.227	.072	.364	.209	.067	.334	.192	.062	.306	.177	.057			
2.0	.349	.191	.059	.333	.183	.056	.302	.168	.052	.275	.154	.048	.249	.141	.044			
3.0	.305	.162	.049	.290	.155	.047	.263	.142	.043	.237	.130	.040	.214	.118	.037			
4.0	.272	.141	.042	.258	.135	.040	.233	.124	.037	.210	.113	.034	.188	.102	.031			
5.0	.245	.125	.036	.233	.120	.035	.210	.109	.032	.189	.100	.030	.169	.090	.027			
6.0	.224	.112	.032	.212	.107	.031	.191	.098	.029	.172	.089	.026	.153	.081	.024			
7.0	.205	.102	.029	.195	.097	.028	.176	.089	.026	.157	.081	.023	.140	.073	.021			
8.0	.190	.093	.026	.180	.089	.025	.162	.081	.023	.145	.074	.021	.130	.066	.019			
9.0	.176	.085	.024	.168	.082	.023	.151	.075	.021	.135	.068	.019	.120	.061	.018			
10.0	.165	.079	.022	.157	.076	.021	.141	.069	.019	.126	.063	.018	.112	.057	.016			

ρ <sub>CC</sub>	80%			70%			50%			30%			10%			0		
ρ <sub>w</sub>	50%	30%	10%	50%	30%	10%	50%	30%	10%	50%	30%	10%	50%	30%	10%	0		
ρ <sub>fc</sub>	20%			20%			20%			20%			20%			0		
RCR	RCR:Room Cavity Ratio									Ceiling Cavity Exitance Coefficients(CCEC)								
0.0	.451	.451	.451	.386	.386	.386	.263	.263	.263	.151	.151	.151	.048	.048	.048			
1.0	.450	.418	.389	.385	.359	.335	.264	.247	.231	.152	.143	.135	.049	.046	.044			
2.0	.444	.396	.356	.381	.341	.307	.261	.236	.214	.150	.137	.126	.048	.044	.041			
3.0	.437	.380	.335	.375	.328	.291	.257	.228	.204	.149	.133	.120	.048	.043	.039			
4.0	.430	.369	.322	.369	.319	.280	.253	.222	.197	.147	.130	.117	.047	.042	.038			
5.0	.422	.359	.313	.362	.311	.272	.250	.217	.192	.145	.127	.114	.047	.042	.038			
6.0	.414	.352	.307	.356	.305	.267	.246	.213	.189	.143	.125	.112	.046	.041	.037			
7.0	.407	.345	.302	.350	.299	.263	.242	.210	.186	.141	.124	.111	.045	.040	.037			
8.0	.401	.340	.298	.345	.295	.260	.239	.207	.184	.139	.122	.110	.045	.040	.036			
9.0	.394	.335	.295	.340	.291	.258	.235	.205	.183	.137	.121	.109	.044	.040	.036			
10.0	.389	.331	.293	.335	.288	.256	.232	.202	.182	.136	.120	.108	.044	.039	.036			

C Range: 0 - 360DEG  
 C Interval: 22.5DEG  
 Test Speed: HIGH  
 Temperature:25.3°C  
 Operators:DAMIN  
 Test Date:2023-11-09

γ Range: 0 - 180DEG  
 γ Interval: 5.0DEG  
 Test System:EVERFINE GO-2000B\_V1 SYSTEM V2.00.473  
 Humidity:65.0%  
 Test Distance:9.401m [K=1.0000]  
 Remarks:

**UGR(Unified Glare Rating) Table**

Test:U:220.33V I:0.0762A P:9.0394W PF:0.5381 Freq:50.00Hz										
Lamp Flux:975.598x1 lm										
NAME: 球泡			TYPE:				WEIGHT:			
SPEC.:			DIM.:				SERIAL No.:			
MFR.: EVERFINE			SUR.: 1				Shielding Angle:			
ceiling/cavity	0.7	0.7	0.5	0.5	0.3	0.7	0.7	0.5	0.5	0.3
walls	0.5	0.3	0.5	0.3	0.3	0.5	0.3	0.5	0.3	0.3
working plane	0.2	0.2	0.2	0.2	0.2	0.2	0.2	0.2	0.2	0.2
Room dimensions	Viewed crosswise					Viewed endwise				
x = 2H y = 2H	5.3	6.5	6.0	7.2	8.1	4.9	6.2	5.6	6.9	7.8
3H	8.2	9.3	8.9	10.1	11.0	7.8	9.0	8.5	9.7	10.6
4H	9.8	10.9	10.6	11.7	12.6	9.4	10.5	10.2	11.3	12.2
6H	11.7	12.7	12.4	13.5	14.4	11.2	12.2	12.0	13.0	14.0
8H	12.7	13.6	13.4	14.4	15.4	12.2	13.2	13.0	14.0	15.0
12H	13.8	14.8	14.6	15.6	16.5	13.4	14.3	14.1	15.1	16.1
4H 2H	6.1	7.2	6.9	8.0	8.9	5.9	7.0	6.6	7.7	8.7
3H	9.2	10.2	10.0	11.0	11.9	8.9	9.9	9.7	10.7	11.6
4H	11.0	11.9	11.8	12.7	13.7	10.7	11.5	11.5	12.4	13.4
6H	13.0	13.8	13.8	14.6	15.6	12.6	13.4	13.4	14.2	15.3
8H	14.1	14.8	14.9	15.7	16.7	13.7	14.4	14.5	15.3	16.3
12H	15.4	16.0	16.2	16.9	18.0	15.0	15.6	15.8	16.5	17.6
8H 4H	11.6	12.3	12.5	13.2	14.2	11.4	12.1	12.2	12.9	14.0
6H	13.9	14.5	14.7	15.4	16.5	13.6	14.2	14.4	15.1	16.2
8H	15.2	15.7	16.0	16.6	17.7	14.9	15.4	15.7	16.3	17.4
12H	16.7	17.2	17.6	18.1	19.2	16.3	16.8	17.2	17.7	18.8
12H 4H	11.8	12.4	12.6	13.3	14.4	11.5	12.2	12.4	13.1	14.1
6H	14.1	14.7	15.0	15.6	16.7	13.9	14.4	14.8	15.3	16.4
8H	15.6	16.0	16.4	16.9	18.1	15.3	15.8	16.2	16.7	17.8
Variations with the observer position at spacings(CIE Pub.117):										
S = 1.0H	+ 0.1 / - 0.1					+ 0.1 / - 0.1				
1.5H	+ 0.2 / - 0.3					+ 0.2 / - 0.3				
2.0H	+ 0.3 / - 0.4					+ 0.3 / - 0.4				

CIE Pub.117, 975.6 lm Total Lamp Luminous Flux Correct (8log(F/F0) = -0.1)  
 Area: 1 m2

C Range: 0 - 360DEG  
 C Interval: 22.5DEG  
 Test Speed: HIGH  
 Temperature:25.3°C  
 Operators:DAMIN  
 Test Date:2023-11-09

γ Range: 0 - 180DEG  
 γ Interval: 5.0DEG  
 Test System:EVERFINE GO-2000B\_V1 SYSTEM V2.00.473  
 Humidity:65.0%  
 Test Distance:9.401m [K=1.0000]  
 Remarks:

**UTILIZATION FACTORS TABLE**

Test:U:220.33V I:0.0762A P:9.0394W PF:0.5381 Freq:50.00Hz Lamp Flux:975.598x1 lm		
NAME: 球泡	TYPE:	WEIGHT:
SPEC.:	DIM.:	SERIAL No.:
MFR.: EVERFINE	SUR.: 1	Shielding Angle:

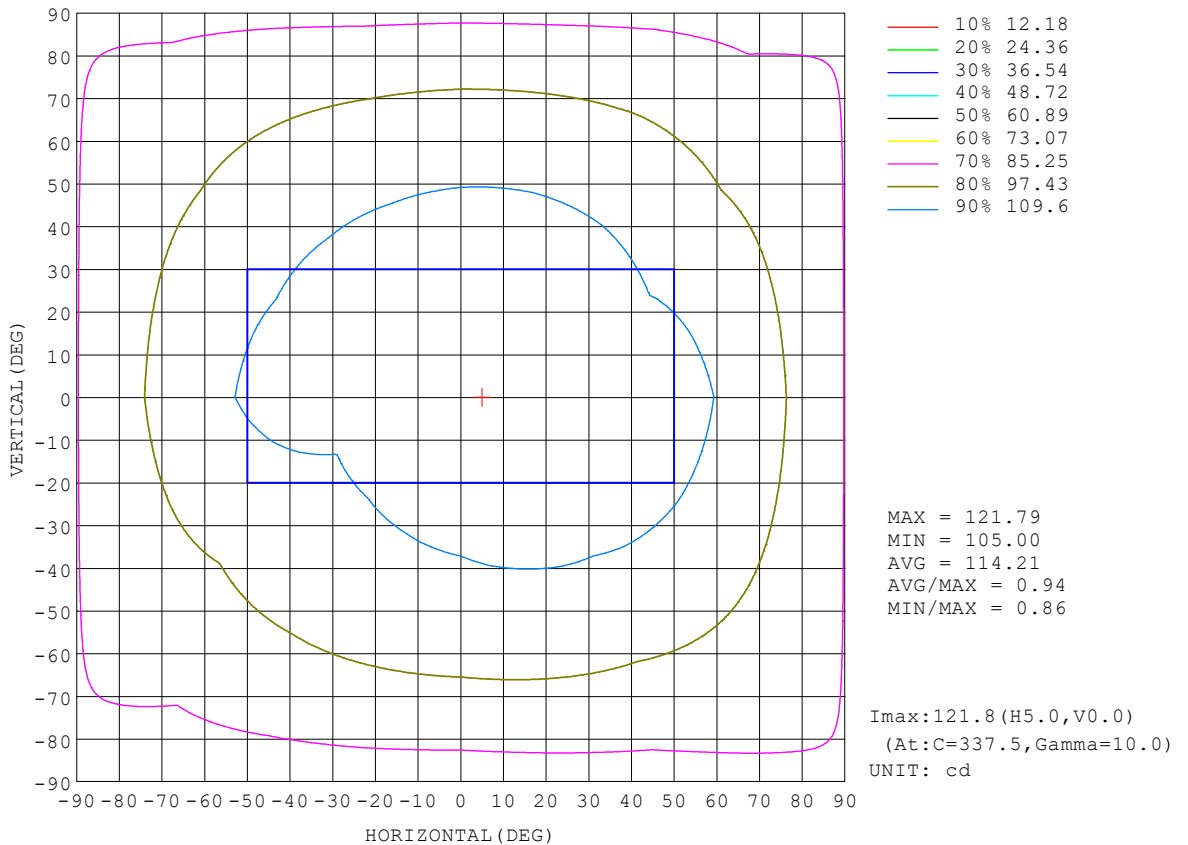
REFLECTANCE										
Ceiling	0.8	0.8	0.8	0.7	0.7	0.7	0.5	0.5	0.5	0
Walls	0.7	0.5	0.3	0.7	0.5	0.3	0.7	0.5	0.3	0
Working plane	0.2	0.2	0.2	0.2	0.2	0.2	0.2	0.2	0.2	0
ROOM INDEX	UTILIZATION FACTORS (PERCENT) $k(RI) \times RCR = 5$									
k = 0.60	41	28	21	39	27	20	36	26	19	12
0.80	49	36	27	47	34	27	43	32	25	16
1.00	57	43	34	54	41	33	49	41	31	21
1.25	64	50	40	60	48	39	54	44	37	25
1.50	69	55	46	65	53	44	58	48	41	28
2.00	76	64	55	72	61	52	64	55	48	33
2.50	81	70	61	77	66	58	68	60	53	37
3.00	85	75	66	80	71	63	71	64	57	40
4.00	90	81	74	85	77	70	75	69	63	44
5.00	94	86	79	88	81	75	78	72	67	47
ROOM INDEX	UF(total)									Direct
According to DIN EN 13032-2 2004			Suspended				SHRNOM = 1.25			

C Range: 0 - 360DEG  
 C Interval: 22.5DEG  
 Test Speed: HIGH  
 Temperature:25.3°C  
 Operators:DAMIN  
 Test Date:2023-11-09

$\gamma$  Range: 0 - 180DEG  
 $\gamma$  Interval: 5.0DEG  
 Test System:EVERFINE GO-2000B\_V1 SYSTEM V2.00.473  
 Humidity:65.0%  
 Test Distance:9.401m [K=1.0000]  
 Remarks:

**ISOCANDELA DIAGRAM**

Test:U:220.33V I:0.0762A P:9.0394W PF:0.5381 Freq:50.00Hz Lamp Flux:975.598x1 lm		
NAME: 球泡	TYPE:	WEIGHT:
SPEC.:	DIM.:	SERIAL No.:
MFR.: EVERFINE	SUR.: 1	Shielding Angle:



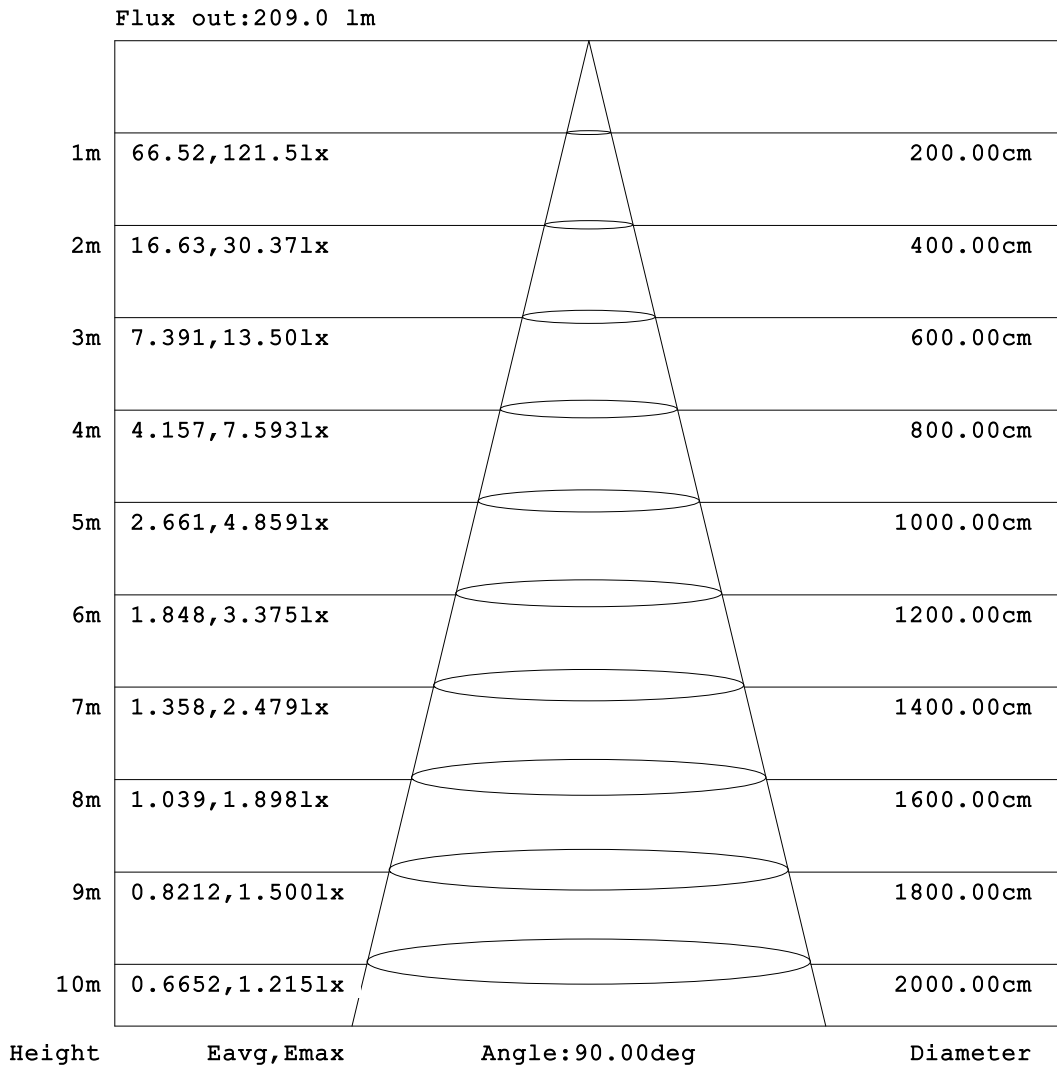
C Range: 0 - 360DEG  
 C Interval: 22.5DEG  
 Test Speed: HIGH  
 Temperature: 25.3°C  
 Operators: DAMIN  
 Test Date: 2023-11-09

γ Range: 0 - 180DEG  
 γ Interval: 5.0DEG  
 Test System: EVERFINE GO-2000B\_V1 SYSTEM V2.00.473  
 Humidity: 65.0%  
 Test Distance: 9.401m [K=1.0000]  
 Remarks:



**AAI Figure**

Test:U:220.33V I:0.0762A P:9.0394W PF:0.5381 Freq:50.00Hz Lamp Flux:975.598x1 lm		
NAME: 球泡	TYPE:	WEIGHT:
SPEC.:	DIM.:	SERIAL No.:
MFR.: EVERFINE	SUR.: 1	Shielding Angle:



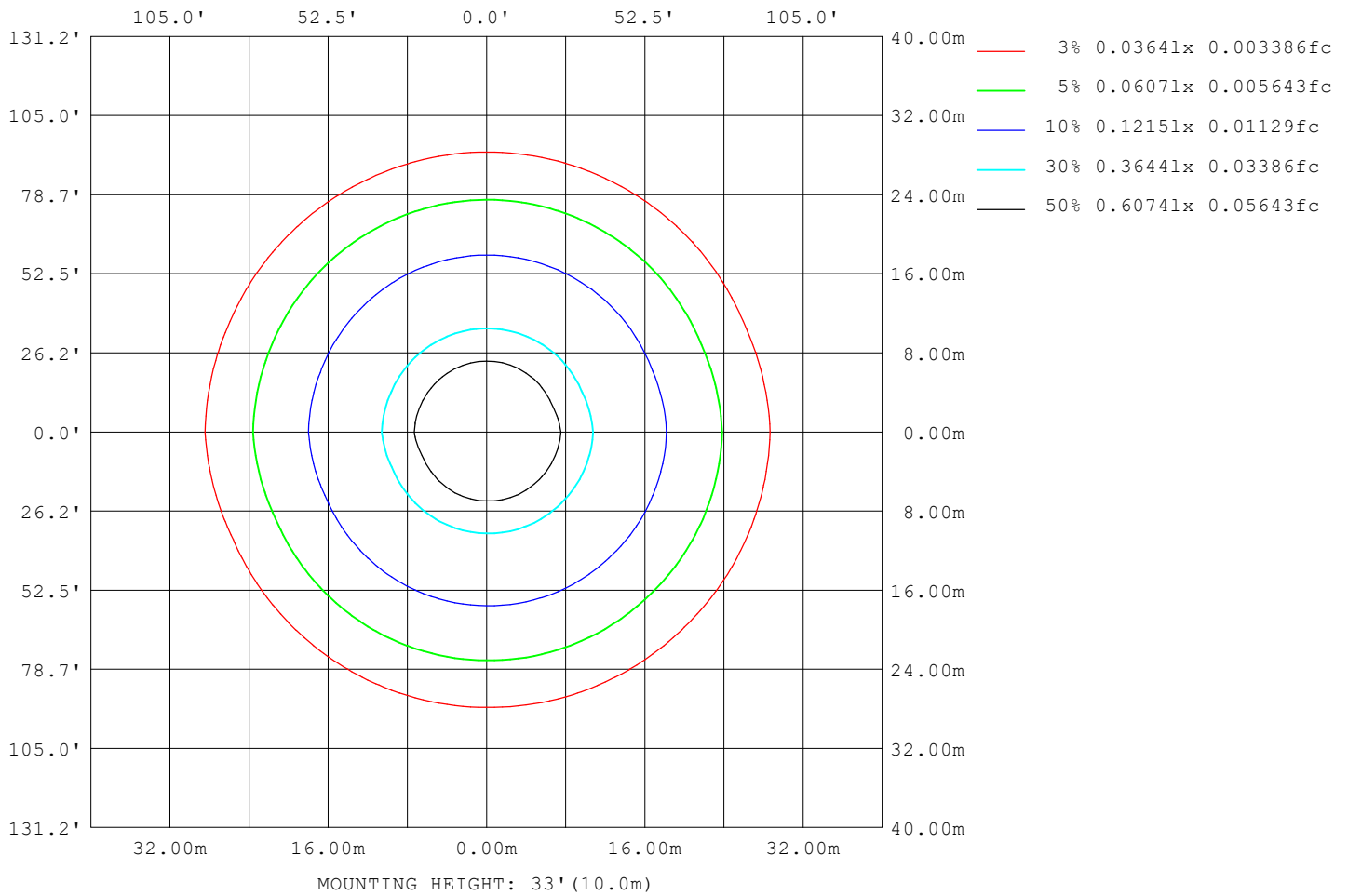
Note: The Curves indicate the illuminated area and the average illumination when the luminaire is at different distance.

C Range: 0 - 360DEG  
C Interval: 22.5DEG  
Test Speed: HIGH  
Temperature: 25.3°C  
Operators: DAMIN  
Test Date: 2023-11-09

γ Range: 0 - 180DEG  
γ Interval: 5.0DEG  
Test System: EVERFINE GO-2000B\_V1 SYSTEM V2.00.473  
Humidity: 65.0%  
Test Distance: 9.401m [K=1.0000]  
Remarks:

**ISOLUX DIAGRAM**

Test:U:220.33V I:0.0762A P:9.0394W PF:0.5381 Freq:50.00Hz Lamp Flux:975.598x1 lm		
NAME: 球泡	TYPE:	WEIGHT:
SPEC.:	DIM.:	SERIAL No.:
MFR.: EVERFINE	SUR.: 1	Shielding Angle:



C Range: 0 - 360DEG  
 C Interval: 22.5DEG  
 Test Speed: HIGH  
 Temperature:25.3°C  
 Operators:DAMIN  
 Test Date:2023-11-09

γ Range: 0 - 180DEG  
 γ Interval: 5.0DEG  
 Test System:EVERFINE GO-2000B\_V1 SYSTEM V2.00.473  
 Humidity:65.0%  
 Test Distance:9.401m [K=1.0000]  
 Remarks:

**LED Avg.L Report**

Test:U:220.33V I:0.0762A P:9.0394W PF:0.5381 Freq:50.00Hz Lamp Flux:975.598x1 lm		
NAME: 球泡	TYPE:	WEIGHT:
SPEC.:	DIM.:	SERIAL No.:
MFR.: EVERFINE	SUR.: 1	Shielding Angle:

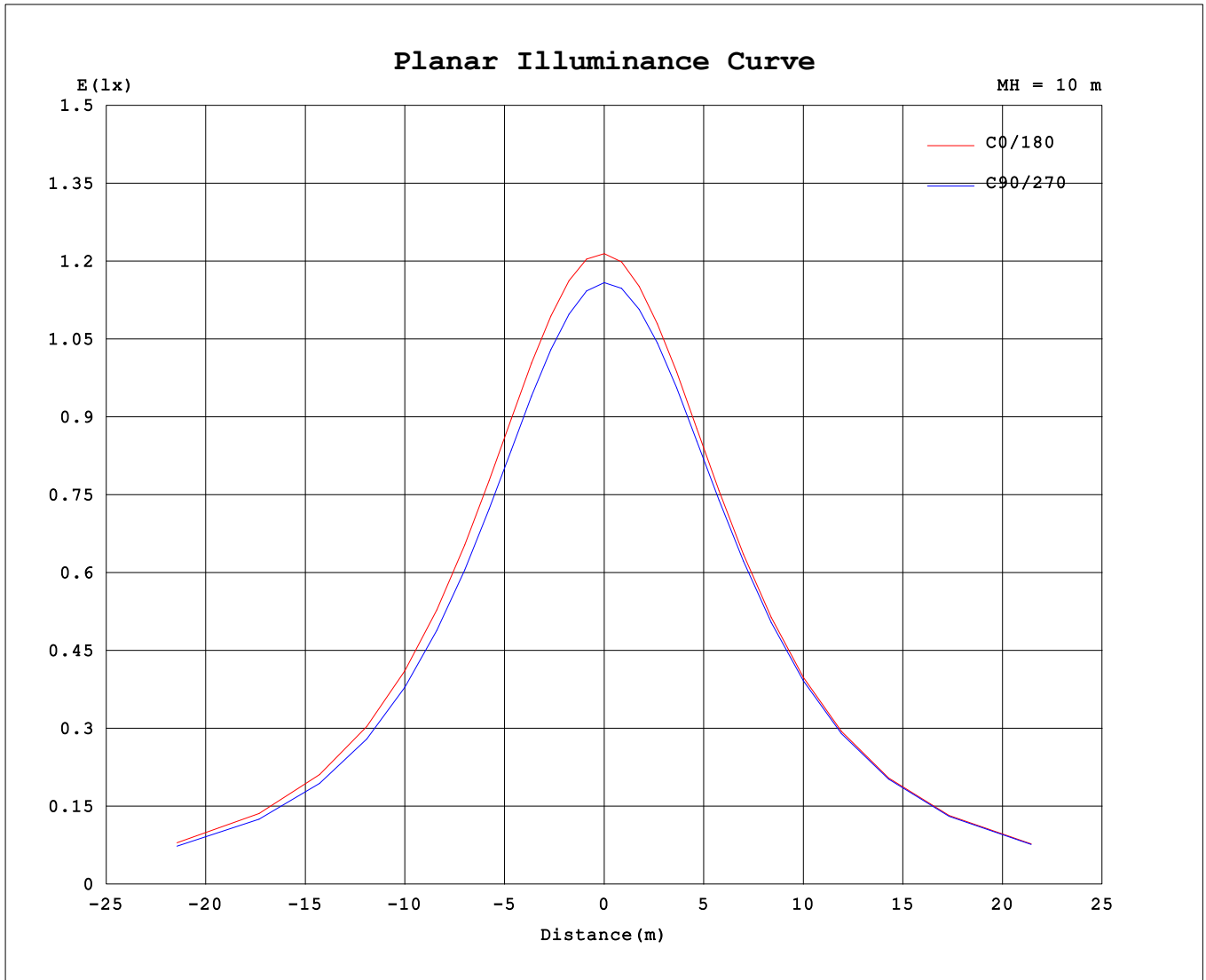
AvgL	cd/m2
L_0~180 (65) av	239
L_0~180 (75) av	363
L_0~180 (85) av	988
L_90~270 (65) av	239
L_90~270 (75) av	364
L_90~270 (85) av	990
L_45 (65) av	239
L_45 (75) av	364
L_45 (85) av	990

Standard: GB/T 29293-2012

C Range: 0 - 360DEG  
 C Interval: 22.5DEG  
 Test Speed: HIGH  
 Temperature:25.3℃  
 Operators:DAMIN  
 Test Date:2023-11-09

γ Range: 0 - 180DEG  
 γ Interval: 5.0DEG  
 Test System:EVERFINE GO-2000B\_V1 SYSTEM V2.00.473  
 Humidity:65.0%  
 Test Distance:9.401m [K=1.0000]  
 Remarks:

**Planar Illuminance Curve**



C Range: 0 - 360DEG  
 C Interval: 22.5DEG  
 Test Speed: HIGH  
 Temperature: 25.3°C  
 Operators: DAMIN  
 Test Date: 2023-11-09

γ Range: 0 - 180DEG  
 γ Interval: 5.0DEG  
 Test System: EVERFINE GO-2000B\_V1 SYSTEM V2.00.473  
 Humidity: 65.0%  
 Test Distance: 9.401m [K=1.0000]  
 Remarks:

LUMINOUS DISTRIBUTION INTENSITY DATA

Test:U:220.33V I:0.0762A P:9.0394W PF:0.5381 Freq:50.00Hz Lamp Flux:975.598x1 lm		
NAME: 球泡	TYPE:	WEIGHT:
SPEC.:	DIM.:	SERIAL No.:
MFR.: EVERFINE	SUR.: 1	Shielding Angle:

Table--1

UNIT: cd

C (DEG) \ γ (DEG)	0	22.5	45	67.5	90	112.5	135	157.5	180	202.5	225	247.5	270	292.5	315	337.5			
0	117	117	117	117	117	117	117	117	117	117	117	117	117	117	117	117			
5	117	117	117	117	117	117	117	117	117	117	117	117	117	117	117	117			
10	117	117	117	116	116	116	116	116	116	116	117	117	117	117	117	117			
15	117	117	116	116	115	115	115	115	115	115	116	116	117	117	117	117			
20	117	116	115	115	114	114	114	114	115	115	115	116	116	117	117	117			
25	116	115	115	114	113	113	113	113	114	114	114	115	116	116	116	116			
30	115	115	114	113	112	112	112	112	112	113	114	114	115	116	116	116			
35	115	114	113	112	111	111	111	111	111	112	113	113	114	115	115	115			
40	113	113	112	111	110	110	109	109	110	110	111	112	113	114	114	114			
45	112	111	110	109	108	108	108	108	109	109	110	111	112	113	113	113			
50	110	109	108	107	106	106	106	106	107	107	108	109	110	111	112	111			
55	108	107	106	105	104	104	104	104	105	105	106	107	108	109	109	109			
60	105	104	103	102	102	101	101	102	102	102	104	105	106	107	107	106			
65	102	101	100	99.4	98.7	98.6	98.5	98.9	99.5	99.6	101	102	103	104	104	103			
70	98.6	98.0	96.6	96.1	95.4	95.5	95.4	95.9	96.5	96.6	97.9	98.7	99.9	100	101	100			
75	94.9	94.3	92.9	92.5	91.9	92.2	92.1	92.6	93.2	93.2	94.5	95.2	96.3	96.8	97.1	96.4			
80	90.8	90.2	88.9	88.7	88.2	88.5	88.5	89.1	89.7	89.6	90.9	91.4	92.5	92.9	93.1	92.3			
85	86.5	86.0	84.7	84.5	84.1	84.6	84.7	85.2	85.8	85.7	87.0	87.4	88.4	88.6	88.7	88.0			
90	81.8	81.5	80.3	80.3	80.0	80.5	80.7	81.2	81.8	81.6	82.8	83.1	84.0	84.1	84.2	83.4			
95	77.1	76.9	75.8	75.9	75.7	76.3	76.5	77.1	77.6	77.4	78.5	78.8	79.5	79.4	79.5	78.7			
100	72.4	72.2	71.2	71.4	71.2	71.9	72.3	72.8	73.4	73.1	74.1	74.3	74.9	74.7	74.7	73.9			
105	67.6	67.4	66.6	66.8	66.8	67.5	67.9	68.5	69.0	68.7	69.6	69.7	70.2	70.0	69.9	69.0			
110	62.8	62.7	61.9	62.2	62.3	63.1	63.5	64.1	64.6	64.2	65.1	65.0	65.4	65.1	65.0	64.1			
115	58.1	57.9	57.3	57.7	57.8	58.7	59.0	59.7	60.2	59.7	60.5	60.4	60.7	60.3	60.1	59.2			
120	53.3	53.3	52.7	53.2	53.4	54.3	54.6	55.3	55.7	55.3	56.0	55.8	56.0	55.6	55.3	54.5			
125	48.8	48.8	48.3	48.8	49.0	49.9	50.3	50.9	51.4	50.9	51.5	51.3	51.4	50.9	50.6	49.8			
130	44.4	44.5	44.0	44.6	44.8	45.7	46.0	46.7	47.1	46.7	47.2	46.9	47.0	46.4	46.1	45.4			
135	40.2	40.3	40.0	40.5	40.8	41.6	41.9	42.6	43.0	42.5	43.0	42.7	42.7	42.1	41.8	41.1			
140	36.3	36.4	36.1	36.6	36.9	37.6	38.0	38.6	39.0	38.6	39.0	38.7	38.6	38.1	37.7	37.1			
145	32.7	32.8	32.5	33.0	33.3	34.0	34.3	34.8	35.3	34.8	35.2	34.8	34.8	34.2	33.9	33.3			
150	29.3	29.5	29.2	29.7	29.9	30.5	30.9	31.4	31.7	31.4	31.7	31.3	31.3	30.7	30.4	29.9			
155	26.0	26.2	25.9	26.3	26.6	27.2	27.5	28.0	28.4	28.0	28.3	28.0	27.9	27.4	27.1	26.5			
160	22.4	22.6	22.4	22.4	23.0	23.6	23.9	24.5	24.8	24.6	24.9	24.6	24.4	23.9	23.6	23.0			
165	18.1	18.3	18.3	17.6	18.9	19.5	19.8	20.6	21.0	20.8	20.9	20.8	20.7	20.1	19.8	19.2			
170	11.5	12.0	11.3	11.5	12.6	13.9	14.2	15.4	15.9	15.9	16.0	16.0	15.8	15.3	14.8	13.9			
175	2.33	1.56	1.43	1.42	1.46	1.95	2.98	4.62	5.34	6.35	7.63	7.70	7.31	6.12	4.90	3.22			
180	1.41	1.44	1.42	1.43	1.42	1.42	1.42	1.42	1.46	1.43	1.45	1.43	1.44	1.43	1.43	1.43			

C Range: 0 - 360DEG  
 C Interval: 22.5DEG  
 Test Speed: HIGH  
 Temperature:25.3°C  
 Operators:DAMIN  
 Test Date:2023-11-09

γ Range: 0 - 180DEG  
 γ Interval: 5.0DEG  
 Test System:EVERFINE GO-2000B\_V1 SYSTEM V2.00.473  
 Humidity:65.0%  
 Test Distance:9.401m [K=1.0000]  
 Remarks: