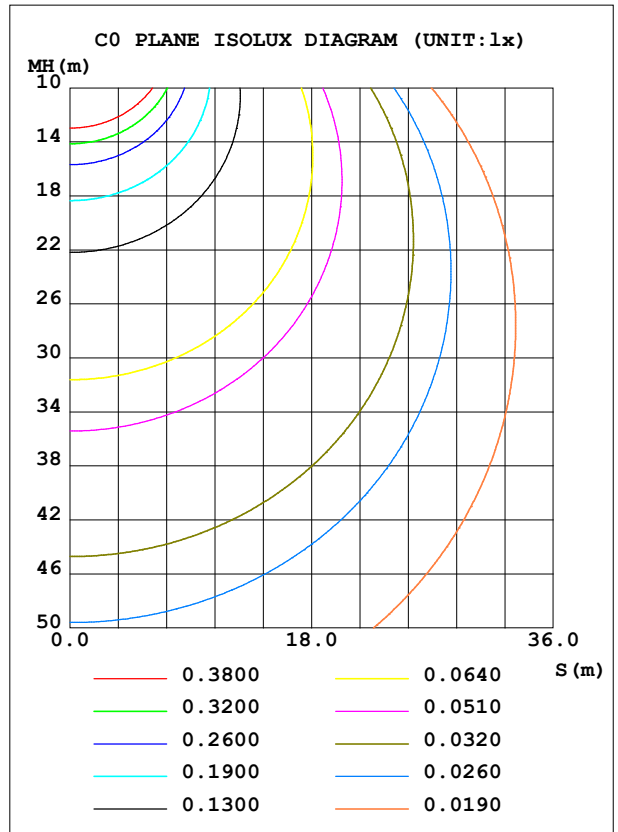
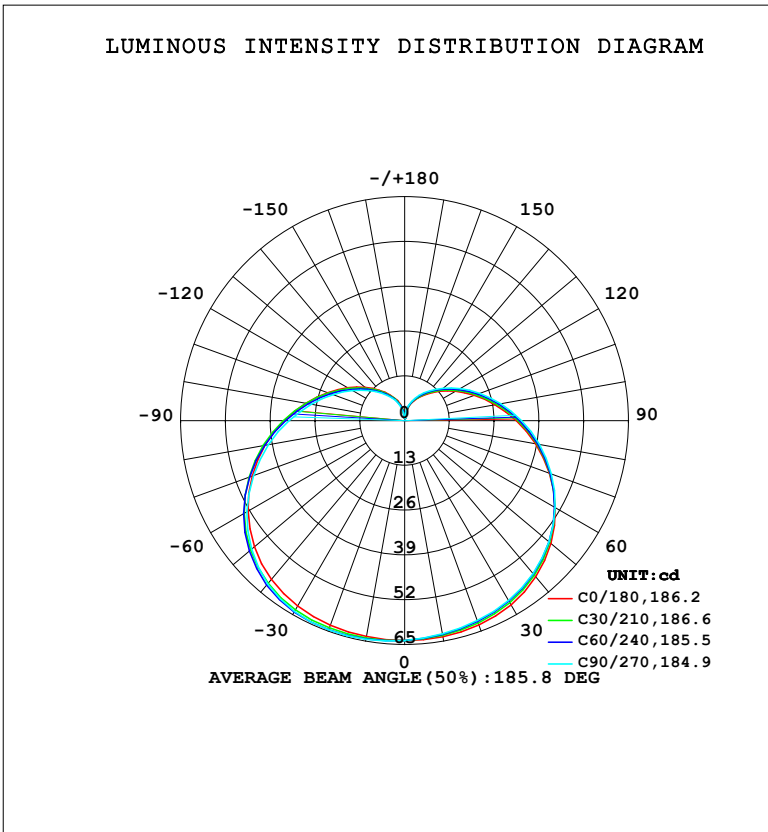


LUMINAIRE PHOTOMETRIC TEST REPORT

Test:U:220.39V I:0.0449A P:5.0231W PF:0.5074 Freq:50.00Hz Lamp Flux:434.234x1 lm		
NAME: 球泡	TYPE:	WEIGHT:
SPEC.:	DIM.:	SERIAL No.:
MFR.: EVERFINE	SUR.: 1	Shielding Angle:

DATA OF LAMP		PHOTOMETRIC DATA				Eff: 86.45 lm/W
MODEL	A55	I <sub>max</sub> (cd)	64.75	S/MH (C0/180)	1.47	
NOMINAL POWER (W)	5	LOR (%)	100.0	S/MH (C90/270)	1.51	
RATED VOLTAGE (V)	220	TOTAL FLUX (lm)	434.23	η UP, DN (C0-180)	13.4, 36.1	
NOMINAL FLUX (lm)	434.234	CIE CLASS	SEMI-D.	η UP, DN (C180-360)	13.1, 37.3	
LAMPS INSIDE	1	η up (%)	26.6	CIBSE SHR NOM	1.75	
TEST VOLTAGE (V)	219.5	η down (%)	73.4	CIBSE SHR MAX	1.75	



C Range: 0 - 360DEG  
C Interval: 15.0DEG  
Test Speed: HIGH  
Temperature: 25.3°C  
Operators: DAMIN  
Test Date: 2023-12-23

γ Range: 0 - 180DEG  
γ Interval: 5.0DEG  
Test System: EVERFINE GO-2000B\_V1 SYSTEM V2.00.473  
Humidity: 65.0%  
Test Distance: 9.401m [K=1.0000]  
Remarks:

**ZONAL FLUX DIAGRAM**

ZONAL FLUX DIAGRAM:

$\gamma$	C0	C45	C90	C135	C180	C225	C270	C315	$\gamma$	$\Phi$ zone	$\Phi$ total	%lum,lamp
10	63.69	63.10	62.84	63.02	63.64	64.25	64.47	64.16	0- 10	6.082	6.082	1.4,1.4
20	63.12	62.18	61.73	61.98	63.16	64.44	64.62	64.07	10- 20	17.97	24.06	5.54,5.54
30	61.76	60.77	60.28	60.57	62.16	63.99	63.97	62.95	20- 30	28.99	53.05	12.2,12.2
40	59.21	58.38	57.99	58.37	60.17	62.21	61.84	60.41	30- 40	38.31	91.35	21,21
50	55.40	54.89	54.69	55.12	56.92	58.87	58.04	56.42	40- 50	44.99	136.3	31.4,31.4
60	50.47	50.36	50.40	50.88	52.51	54.07	52.87	51.17	50- 60	48.42	184.8	42.5,42.5
70	44.73	45.01	45.33	45.84	47.11	48.14	46.71	45.13	60- 70	48.44	233.2	53.7,53.7
80	38.57	39.19	39.70	40.26	41.15	41.59	40.10	38.71	70- 80	45.43	278.6	64.2,64.2
90	32.46	33.27	33.94	34.52	35.05	34.97	33.58	32.38	80- 90	40.17	318.8	73.4,73.4
100	26.72	27.62	28.38	28.93	29.19	28.76	27.54	26.52	90-100	33.64	352.4	81.2,81.2
110	21.57	22.45	23.25	23.76	23.83	23.27	22.18	21.34	100-110	26.77	379.2	87.3,87.3
120	17.12	17.90	18.68	19.15	19.14	18.51	17.57	16.90	110-120	20.24	399.5	92,92
130	13.33	14.00	14.72	15.13	15.07	14.49	13.68	13.17	120-130	14.48	413.9	95.3,95.3
140	10.16	10.71	11.34	11.70	11.64	11.12	10.46	10.06	130-140	9.711	423.6	97.6,97.6
150	7.541	7.968	8.504	8.803	8.748	8.334	7.794	7.476	140-150	5.986	429.6	98.9,98.9
160	5.156	5.520	6.012	6.268	6.232	5.898	5.319	5.115	150-160	3.226	432.9	99.7,99.7
170	1.483	2.352	3.207	3.568	3.413	3.192	2.431	1.142	160-170	1.245	434.1	100,100
180	0.6967	0.6934	0.7045	0.7047	0.7208	0.7114	0.7105	0.7047	170-180	0.1349	434.2	100,100
DEG	LUMINOUS INTENSITY:cd									UNIT:lm		

Conical surface Flux(90deg): 113.21 lm

%lum = 26.1%

%lamp = 26.1%

Conical surface Flux(130deg): 209.18 lm

%lum = 48.2%

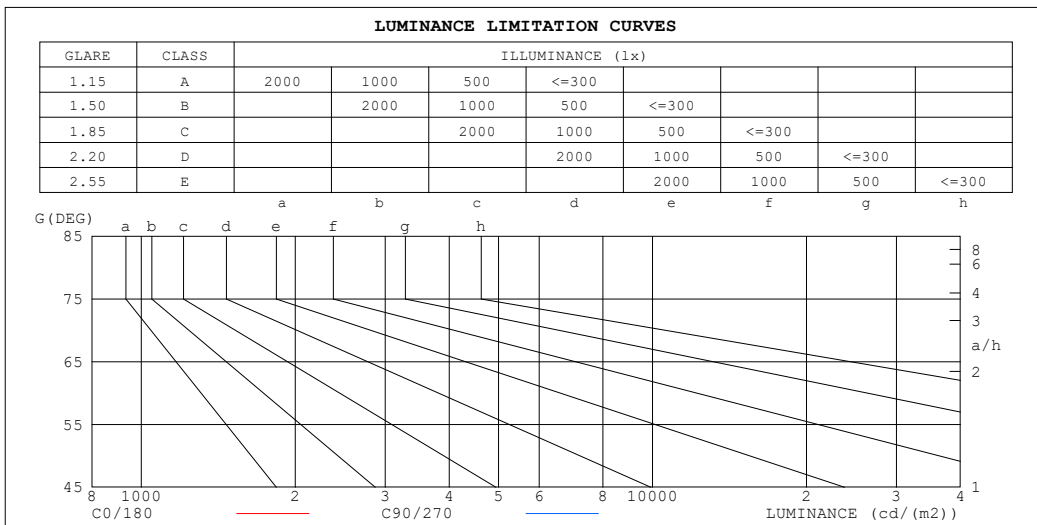
%lamp = 48.2%

C Range: 0 - 360DEG  
 C Interval: 15.0DEG  
 Test Speed: HIGH  
 Temperature:25.3°C  
 Operators:DAMIN  
 Test Date:2023-12-23

$\gamma$  Range: 0 - 180DEG  
 $\gamma$  Interval: 5.0DEG  
 Test System:EVERFINE GO-2000B\_V1 SYSTEM V2.00.473  
 Humidity:65.0%  
 Test Distance:9.401m [K=1.0000]  
 Remarks:

**LUMINANCE LIMITATION CURVES**

Test:U:220.39V I:0.0449A P:5.0231W PF:0.5074 Freq:50.00Hz Lamp Flux:434.234x1 lm		
NAME: 球泡	TYPE:	WEIGHT:
SPEC.:	DIM.:	SERIAL No.:
MFR.: EVERFINE	SUR.: 1	Shielding Angle:



LUMINANCE cd/(m2)		
G (DEG)	C0/180	C90/270
85	408	422
80	223	229
75	161	164
70	131	133
65	113	113
60	101	101
55	93	92
50	86	85
45	81	80

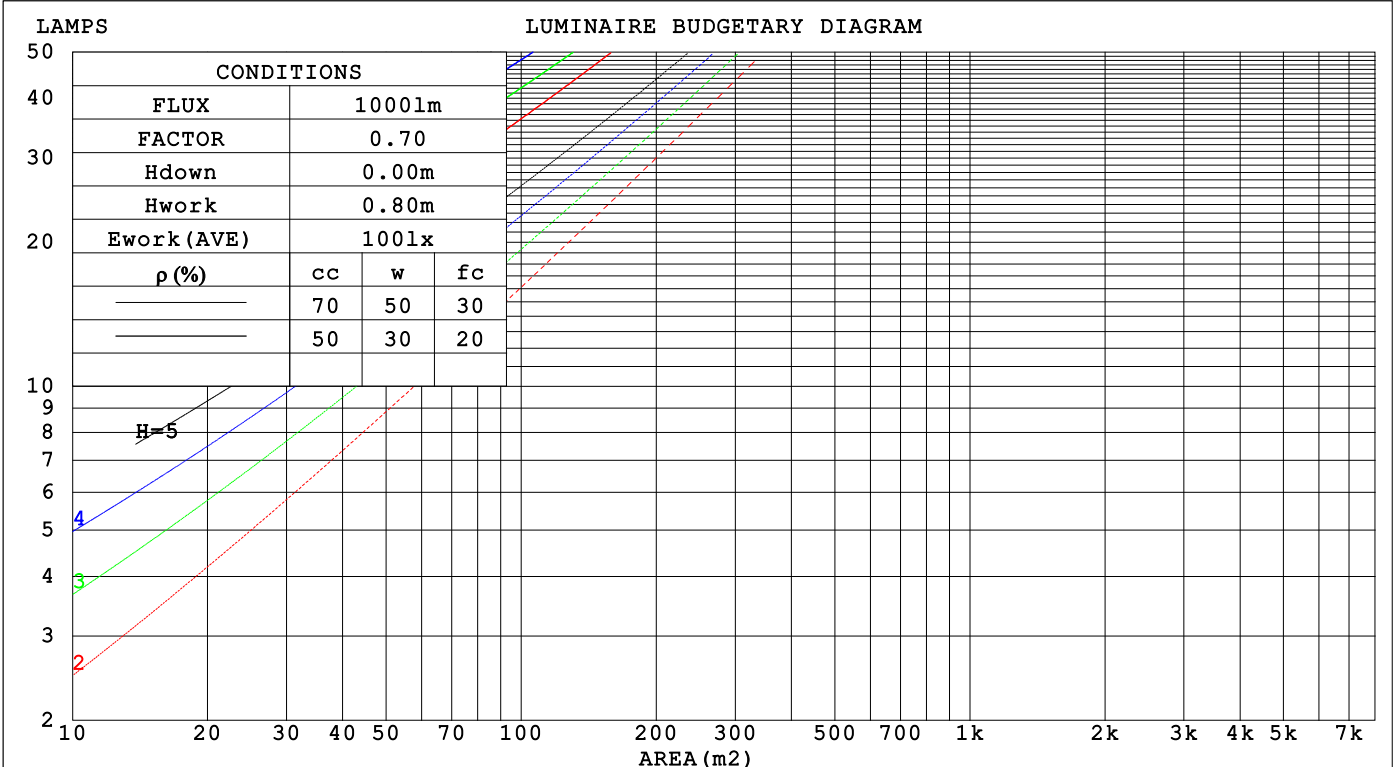
C Range: 0 - 360DEG  
 C Interval: 15.0DEG  
 Test Speed: HIGH  
 Temperature:25.3°C  
 Operators:DAMIN  
 Test Date:2023-12-23

γ Range: 0 - 180DEG  
 γ Interval: 5.0DEG  
 Test System:EVERFINE GO-2000B\_V1 SYSTEM V2.00.473  
 Humidity:65.0%  
 Test Distance:9.401m [K=1.0000]  
 Remarks:

**CU AND LUMINAIRE BUDGETARY ESTIMATE DIAGRAM**

Test:U:220.39V I:0.0449A P:5.0231W PF:0.5074 Freq:50.00Hz Lamp Flux:434.234x1 lm		
NAME: 球泡	TYPE:	WEIGHT:
SPEC.:	DIM.:	SERIAL No.:
MFR.: EVERFINE	SUR.: 1	Shielding Angle:

ρcc	80%			70%			50%			30%			10%			0
ρw	50%	30%	10%	50%	30%	10%	50%	30%	10%	50%	30%	10%	50%	30%	10%	0
ρfc	20%			20%			20%			20%			20%			0
RCR	RCR:Room Cavity Ratio															
	Coefficients of Utilization(CU)															
0.0	1.13	1.13	1.13	1.07	1.07	1.07	.96	.96	.96	.87	.87	.87	.78	.78	.78	.73
1.0	.92	.86	.81	.87	.82	.77	.78	.74	.70	.69	.66	.63	.62	.59	.57	.53
2.0	.78	.70	.63	.74	.66	.60	.66	.60	.55	.58	.54	.49	.52	.48	.44	.41
3.0	.67	.58	.50	.64	.55	.48	.57	.50	.44	.50	.45	.40	.44	.40	.36	.32
4.0	.59	.49	.42	.56	.47	.40	.50	.42	.36	.44	.38	.33	.39	.34	.30	.27
5.0	.52	.42	.35	.49	.40	.34	.44	.36	.31	.39	.33	.28	.35	.29	.25	.22
6.0	.46	.37	.30	.44	.35	.29	.39	.32	.26	.35	.29	.24	.31	.26	.22	.19
7.0	.42	.32	.26	.39	.31	.25	.35	.28	.23	.32	.26	.21	.28	.23	.19	.16
8.0	.38	.29	.23	.36	.28	.22	.32	.25	.20	.29	.23	.18	.26	.21	.17	.14
9.0	.34	.26	.20	.33	.25	.19	.29	.23	.18	.27	.21	.16	.24	.19	.15	.13
10.0	.31	.23	.18	.30	.22	.17	.27	.21	.16	.24	.19	.15	.22	.17	.13	.11



C Range: 0 - 360DEG  
 C Interval: 15.0DEG  
 Test Speed: HIGH  
 Temperature:25.3°C  
 Operators:DAMIN  
 Test Date:2023-12-23

γ Range: 0 - 180DEG  
 γ Interval: 5.0DEG  
 Test System:EVERFINE GO-2000B\_V1 SYSTEM V2.00.473  
 Humidity:65.0%  
 Test Distance:9.401m [K=1.0000]  
 Remarks:

WEC AND CCEC

Test:U:220.39V I:0.0449A P:5.0231W PF:0.5074 Freq:50.00Hz								
Lamp Flux:434.234x1 lm								
NAME: 球泡			TYPE:			WEIGHT:		
SPEC.:			DIM.:			SERIAL No.:		
MFR.: EVERFINE			SUR.: 1			Shielding Angle:		

$\rho_{CC}$	80%			70%			50%			30%			10%			0
$\rho_w$	50%	30%	10%	50%	30%	10%	50%	30%	10%	50%	30%	10%	50%	30%	10%	0
$\rho_{fc}$	20%			20%			20%			20%			20%			0
RCR	RCR:Room Cavity Ratio						Wall Exitance Coefficients(WEC)									
0.0																
1.0	.412	.234	.074	.397	.226	.072	.368	.211	.067	.342	.197	.063	.317	.184	.059	
2.0	.349	.191	.059	.335	.185	.057	.309	.172	.053	.285	.160	.050	.262	.148	.047	
3.0	.306	.163	.049	.294	.157	.047	.270	.146	.044	.248	.136	.042	.227	.126	.039	
4.0	.274	.142	.042	.262	.137	.041	.240	.128	.038	.220	.118	.036	.202	.110	.033	
5.0	.247	.126	.037	.237	.122	.035	.217	.113	.033	.199	.105	.031	.181	.097	.029	
6.0	.226	.113	.032	.216	.109	.031	.198	.101	.030	.181	.094	.028	.165	.087	.026	
7.0	.207	.103	.029	.199	.099	.028	.182	.092	.026	.166	.085	.025	.152	.079	.023	
8.0	.192	.094	.026	.184	.090	.026	.168	.084	.024	.154	.078	.022	.140	.072	.021	
9.0	.178	.086	.024	.171	.083	.023	.157	.077	.022	.143	.072	.021	.131	.066	.019	
10.0	.167	.080	.022	.160	.077	.022	.147	.072	.020	.134	.067	.019	.122	.062	.018	

$\rho_{CC}$	80%			70%			50%			30%			10%			0
$\rho_w$	50%	30%	10%	50%	30%	10%	50%	30%	10%	50%	30%	10%	50%	30%	10%	0
$\rho_{fc}$	20%			20%			20%			20%			20%			0
RCR	RCR:Room Cavity Ratio						Ceiling Cavity Exitance Coefficients(CCEC)									
0.0	.393	.393	.393	.336	.336	.336	.229	.229	.229	.132	.132	.132	.042	.042	.042	
1.0	.392	.359	.330	.335	.308	.284	.229	.212	.197	.132	.123	.114	.042	.040	.037	
2.0	.385	.337	.297	.330	.290	.256	.226	.201	.179	.130	.117	.105	.042	.038	.034	
3.0	.378	.321	.276	.324	.277	.239	.223	.193	.168	.129	.112	.099	.041	.037	.032	
4.0	.370	.309	.262	.318	.267	.228	.219	.186	.160	.126	.109	.095	.041	.035	.031	
5.0	.363	.300	.253	.312	.259	.220	.215	.181	.155	.124	.106	.092	.040	.035	.030	
6.0	.355	.292	.246	.305	.253	.215	.211	.177	.152	.122	.104	.090	.039	.034	.030	
7.0	.348	.285	.241	.299	.247	.210	.207	.173	.149	.120	.102	.089	.039	.033	.029	
8.0	.341	.280	.238	.294	.243	.207	.203	.170	.147	.118	.101	.088	.038	.033	.029	
9.0	.335	.275	.235	.289	.239	.205	.200	.168	.145	.116	.099	.087	.038	.033	.029	
10.0	.329	.271	.233	.284	.235	.203	.197	.166	.144	.115	.098	.086	.037	.032	.029	

C Range: 0 - 360DEG  
 C Interval: 15.0DEG  
 Test Speed: HIGH  
 Temperature:25.3°C  
 Operators:DAMIN  
 Test Date:2023-12-23

$\gamma$  Range: 0 - 180DEG  
 $\gamma$  Interval: 5.0DEG  
 Test System:EVERFINE GO-2000B\_V1 SYSTEM V2.00.473  
 Humidity:65.0%  
 Test Distance:9.401m [K=1.0000]  
 Remarks:

**UGR(Unified Glare Rating) Table**

Test:U:220.39V I:0.0449A P:5.0231W PF:0.5074 Freq:50.00Hz Lamp Flux:434.234x1 lm										
NAME: 球泡			TYPE:				WEIGHT:			
SPEC.:			DIM.:				SERIAL No.:			
MFR.: EVERFINE			SUR.: 1				Shielding Angle:			
ceiling/cavity	0.7	0.7	0.5	0.5	0.3	0.7	0.7	0.5	0.5	0.3
walls	0.5	0.3	0.5	0.3	0.3	0.5	0.3	0.5	0.3	0.3
working plane	0.2	0.2	0.2	0.2	0.2	0.2	0.2	0.2	0.2	0.2
Room dimensions	Viewed crosswise					Viewed endwise				
x = 2H y = 2H	5.9	7.2	6.5	7.8	8.6	5.9	7.2	6.5	7.8	8.5
3H	8.6	9.8	9.2	10.4	11.2	8.6	9.8	9.2	10.5	11.2
4H	10.0	11.2	10.7	11.9	12.7	10.1	11.2	10.7	11.9	12.7
6H	11.7	12.7	12.3	13.4	14.3	11.7	12.8	12.4	13.5	14.3
8H	12.5	13.6	13.2	14.3	15.1	12.7	13.7	13.3	14.4	15.2
12H	13.6	14.6	14.3	15.3	16.1	13.7	14.7	14.4	15.4	16.3
4H 2H	6.8	7.9	7.4	8.6	9.4	6.7	7.9	7.4	8.6	9.4
3H	9.6	10.6	10.3	11.3	12.2	9.6	10.6	10.3	11.3	12.2
4H	11.2	12.2	12.0	12.9	13.8	11.3	12.2	12.0	12.9	13.8
6H	13.0	13.9	13.8	14.6	15.5	13.1	13.9	13.9	14.7	15.6
8H	14.0	14.8	14.8	15.6	16.5	14.1	14.9	14.9	15.7	16.6
12H	15.2	15.9	15.9	16.7	17.6	15.3	16.0	16.1	16.8	17.7
8H 4H	11.9	12.6	12.6	13.4	14.3	11.9	12.7	12.7	13.4	14.4
6H	13.9	14.6	14.7	15.4	16.3	14.0	14.7	14.8	15.5	16.4
8H	15.1	15.7	15.9	16.5	17.5	15.2	15.8	16.0	16.6	17.6
12H	16.5	17.0	17.3	17.8	18.8	16.6	17.1	17.4	17.9	18.9
12H 4H	12.0	12.7	12.8	13.5	14.5	12.0	12.8	12.8	13.5	14.5
6H	14.2	14.8	15.0	15.6	16.6	14.3	14.9	15.1	15.7	16.6
8H	15.5	16.0	16.3	16.8	17.8	15.6	16.1	16.4	16.9	17.9
Variations with the observer position at spacings(CIE Pub.117):										
S = 1.0H	+ 0.1 / - 0.1					+ 0.1 / - 0.1				
1.5H	+ 0.2 / - 0.3					+ 0.2 / - 0.3				
2.0H	+ 0.3 / - 0.4					+ 0.3 / - 0.4				

CIE Pub.117, 434.2 lm Total Lamp Luminous Flux Correct (8log(F/F0) = -2.9)  
Area: 1 m2

C Range: 0 - 360DEG  
C Interval: 15.0DEG  
Test Speed: HIGH  
Temperature:25.3°C  
Operators:DAMIN  
Test Date:2023-12-23

γ Range: 0 - 180DEG  
γ Interval: 5.0DEG  
Test System:EVERFINE GO-2000B\_V1 SYSTEM V2.00.473  
Humidity:65.0%  
Test Distance:9.401m [K=1.0000]  
Remarks:

**UTILIZATION FACTORS TABLE**

Test:U:220.39V I:0.0449A P:5.0231W PF:0.5074 Freq:50.00Hz Lamp Flux:434.234x1 lm		
NAME: 球泡	TYPE:	WEIGHT:
SPEC.:	DIM.:	SERIAL No.:
MFR.: EVERFINE	SUR.: 1	Shielding Angle:

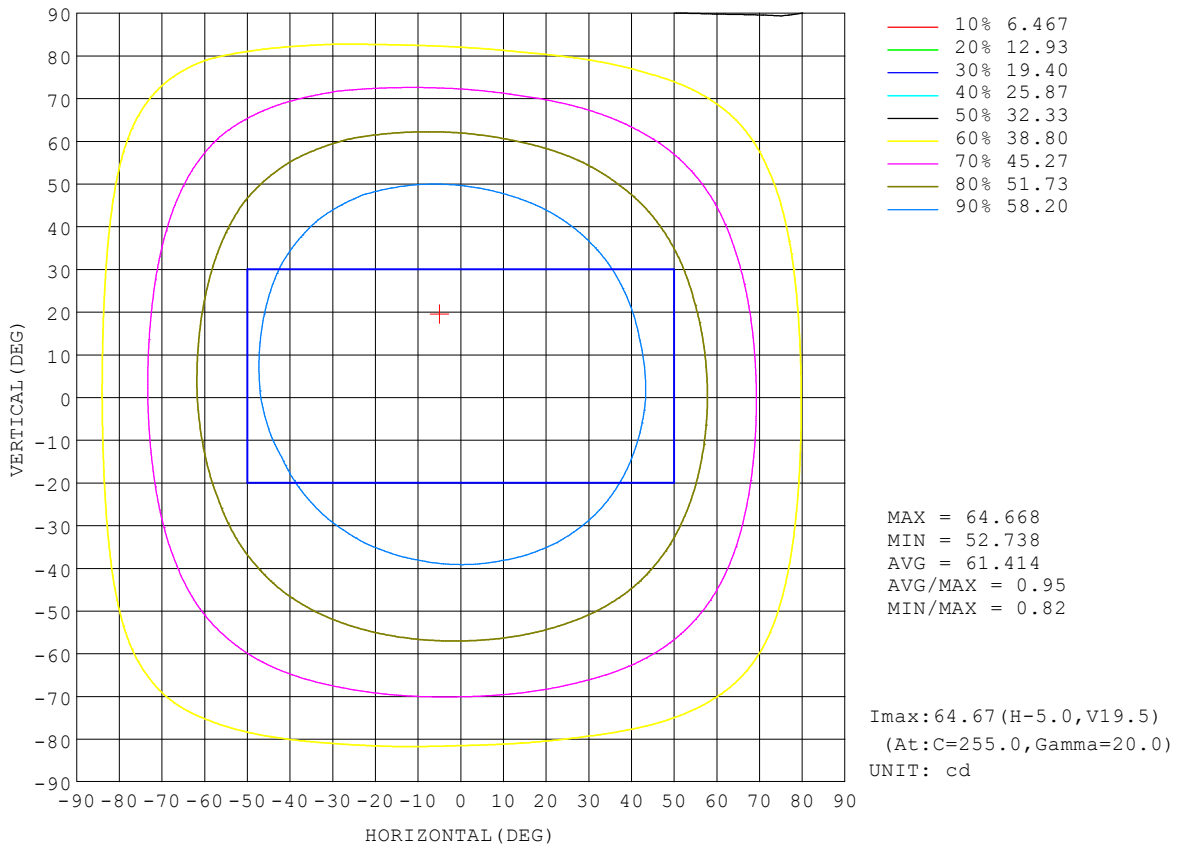
REFLECTANCE										
Ceiling	0.8	0.8	0.8	0.7	0.7	0.7	0.5	0.5	0.5	0
Walls	0.7	0.5	0.3	0.7	0.5	0.3	0.7	0.5	0.3	0
Working plane	0.2	0.2	0.2	0.2	0.2	0.2	0.2	0.2	0.2	0
ROOM INDEX	UTILIZATION FACTORS (PERCENT) $k(RI) \times RCR = 5$									
k = 0.60	43	30	23	42	30	23	39	29	22	15
0.80	52	38	30	50	37	29	47	36	28	20
1.00	59	46	37	57	44	36	53	44	35	25
1.25	66	53	44	64	51	43	58	48	41	30
1.50	72	58	49	68	56	48	63	53	45	33
2.00	79	67	58	75	64	56	69	60	53	39
2.50	84	73	64	80	70	62	72	64	58	43
3.00	88	78	69	84	74	67	76	68	62	46
4.00	93	84	77	88	80	74	80	73	68	51
5.00	96	88	82	91	84	78	82	77	72	54
ROOM INDEX	UF(total)									Direct
According to DIN EN 13032-2 2004			Suspended				SHRNOM = 1.25			

C Range: 0 - 360DEG  
 C Interval: 15.0DEG  
 Test Speed: HIGH  
 Temperature:25.3°C  
 Operators:DAMIN  
 Test Date:2023-12-23

$\gamma$  Range: 0 - 180DEG  
 $\gamma$  Interval: 5.0DEG  
 Test System:EVERFINE GO-2000B\_V1 SYSTEM V2.00.473  
 Humidity:65.0%  
 Test Distance:9.401m [K=1.0000]  
 Remarks:

**ISOCANDELA DIAGRAM**

Test:U:220.39V I:0.0449A P:5.0231W PF:0.5074 Freq:50.00Hz Lamp Flux:434.234x1 lm		
NAME: 球泡	TYPE:	WEIGHT:
SPEC.:	DIM.:	SERIAL No.:
MFR.: EVERFINE	SUR.: 1	Shielding Angle:



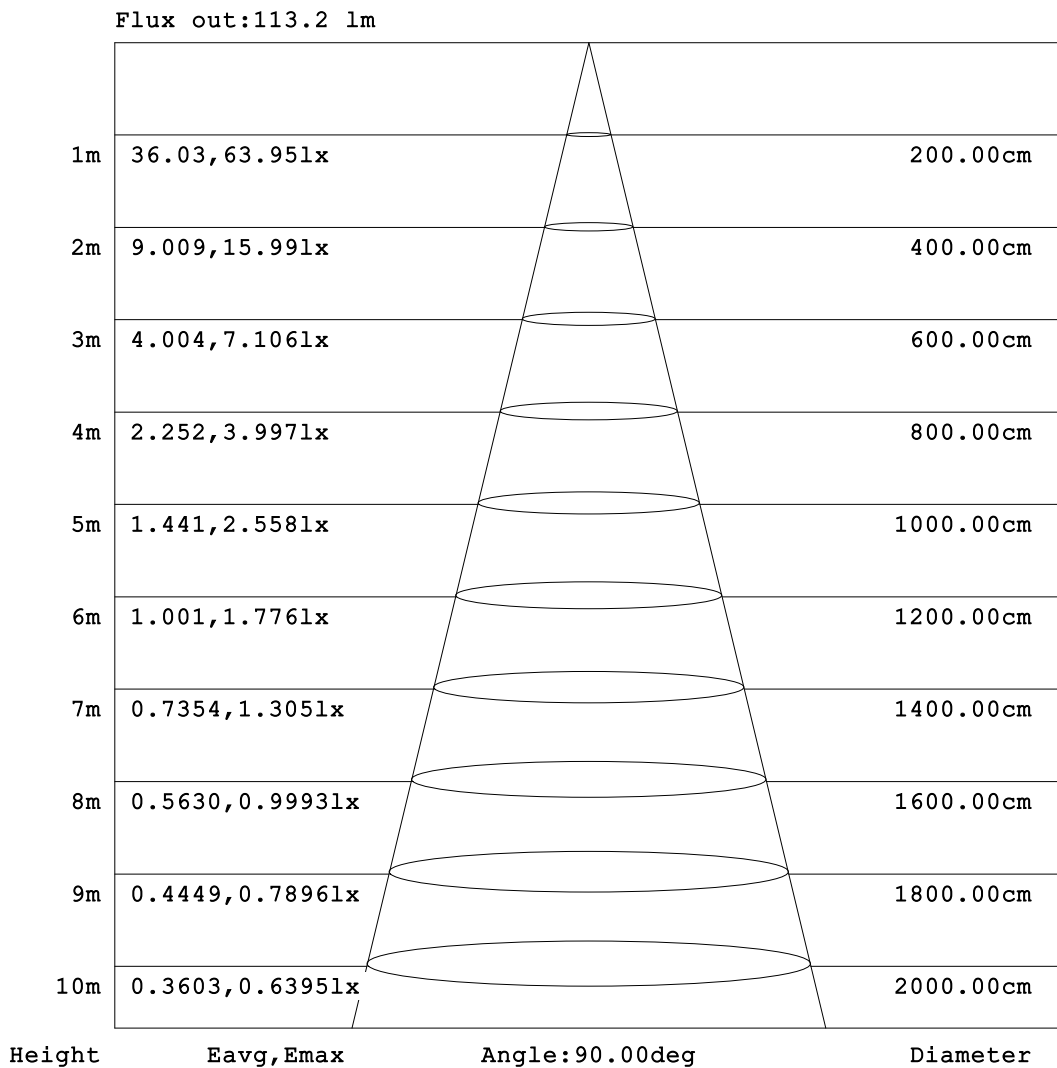
C Range: 0 - 360DEG  
 C Interval: 15.0DEG  
 Test Speed: HIGH  
 Temperature: 25.3°C  
 Operators: DAMIN  
 Test Date: 2023-12-23

γ Range: 0 - 180DEG  
 γ Interval: 5.0DEG  
 Test System: EVERFINE GO-2000B\_V1 SYSTEM V2.00.473  
 Humidity: 65.0%  
 Test Distance: 9.401m [K=1.0000]  
 Remarks:



**AAI Figure**

Test:U:220.39V I:0.0449A P:5.0231W PF:0.5074 Freq:50.00Hz Lamp Flux:434.234x1 lm		
NAME: 球泡	TYPE:	WEIGHT:
SPEC.:	DIM.:	SERIAL No.:
MFR.: EVERFINE	SUR.: 1	Shielding Angle:



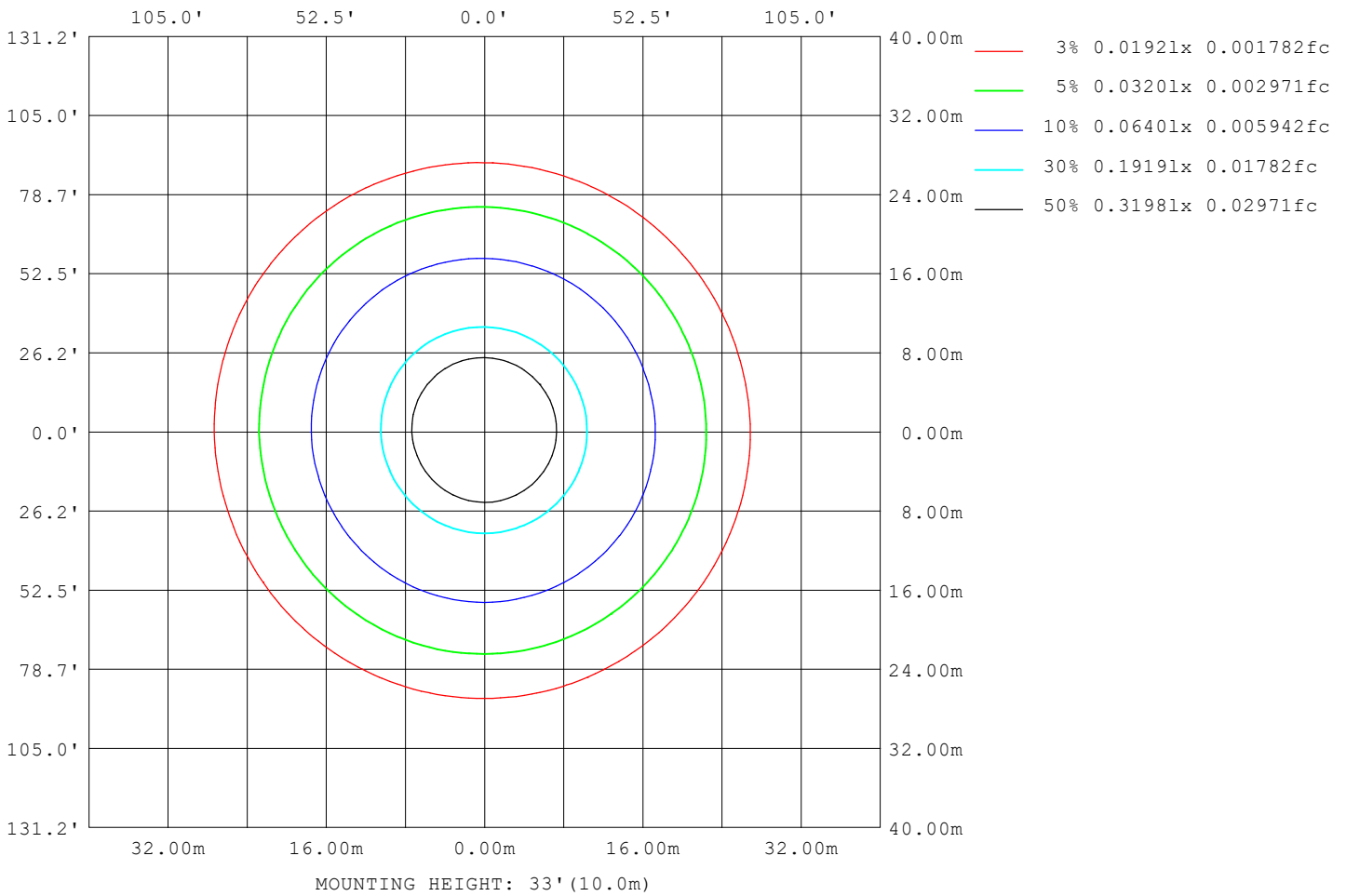
Note: The Curves indicate the illuminated area and the average illumination when the luminaire is at different distance.

C Range: 0 - 360DEG  
C Interval: 15.0DEG  
Test Speed: HIGH  
Temperature: 25.3°C  
Operators: DAMIN  
Test Date: 2023-12-23

γ Range: 0 - 180DEG  
γ Interval: 5.0DEG  
Test System: EVERFINE GO-2000B\_V1 SYSTEM V2.00.473  
Humidity: 65.0%  
Test Distance: 9.401m [K=1.0000]  
Remarks:

**ISOLUX DIAGRAM**

Test:U:220.39V I:0.0449A P:5.0231W PF:0.5074 Freq:50.00Hz Lamp Flux:434.234x1 lm		
NAME: 球泡	TYPE:	WEIGHT:
SPEC.:	DIM.:	SERIAL No.:
MFR.: EVERFINE	SUR.: 1	Shielding Angle:



C Range: 0 - 360DEG  
C Interval: 15.0DEG  
Test Speed: HIGH  
Temperature:25.3°C  
Operators:DAMIN  
Test Date:2023-12-23

γ Range: 0 - 180DEG  
γ Interval: 5.0DEG  
Test System:EVERFINE GO-2000B\_V1 SYSTEM V2.00.473  
Humidity:65.0%  
Test Distance:9.401m [K=1.0000]  
Remarks:

**LED Avg.L Report**

Test:U:220.39V I:0.0449A P:5.0231W PF:0.5074 Freq:50.00Hz Lamp Flux:434.234x1 lm		
NAME: 球泡	TYPE:	WEIGHT:
SPEC.:	DIM.:	SERIAL No.:
MFR.: EVERFINE	SUR.: 1	Shielding Angle:

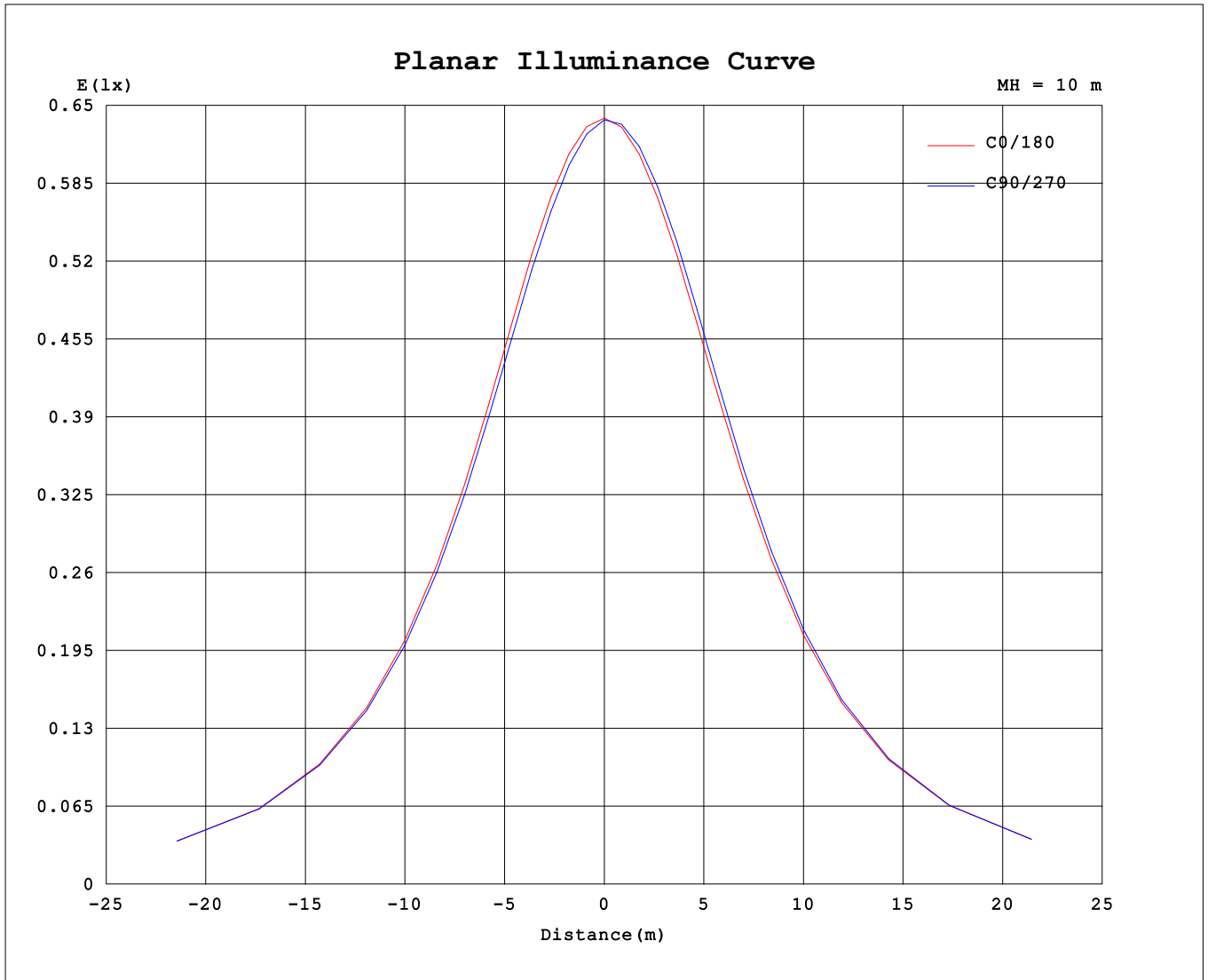
AvgL	cd/m2
L_0~180 (65) av	115
L_0~180 (75) av	166
L_0~180 (85) av	422
L_90~270 (65) av	116
L_90~270 (75) av	166
L_90~270 (85) av	422
L_45 (65) av	116
L_45 (75) av	166
L_45 (85) av	423

Standard: GB/T 29293-2012

C Range: 0 - 360DEG  
 C Interval: 15.0DEG  
 Test Speed: HIGH  
 Temperature:25.3℃  
 Operators:DAMIN  
 Test Date:2023-12-23

γ Range: 0 - 180DEG  
 γ Interval: 5.0DEG  
 Test System:EVERFINE GO-2000B\_V1 SYSTEM V2.00.473  
 Humidity:65.0%  
 Test Distance:9.401m [K=1.0000]  
 Remarks:

**Planar Illuminance Curve**



C Range: 0 - 360DEG  
 C Interval: 15.0DEG  
 Test Speed: HIGH  
 Temperature: 25.3°C  
 Operators: DAMIN  
 Test Date: 2023-12-23

γ Range: 0 - 180DEG  
 γ Interval: 5.0DEG  
 Test System: EVERFINE GO-2000B\_V1 SYSTEM V2.00.473  
 Humidity: 65.0%  
 Test Distance: 9.401m [K=1.0000]  
 Remarks:

LUMINOUS DISTRIBUTION INTENSITY DATA

Test:U:220.39V I:0.0449A P:5.0231W PF:0.5074 Freq:50.00Hz Lamp Flux:434.234x1 lm		
NAME: 球泡	TYPE:	WEIGHT:
SPEC.:	DIM.:	SERIAL No.:
MFR.: EVERFINE	SUR.: 1	Shielding Angle:

Table--1

UNIT: cd

C (DEG) \ γ (DEG)	0	15	30	45	60	75	90	105	120	135	150	165	180	195	210	225	240	255	270
0	63.8	63.8	63.8	63.8	63.8	63.8	63.8	63.8	63.8	63.8	63.8	63.8	63.8	63.8	63.8	63.8	63.8	63.8	63.8
5	63.8	63.7	63.6	63.5	63.4	63.4	63.3	63.3	63.4	63.4	63.5	63.6	63.8	63.8	64.0	64.1	64.1	64.2	64.2
10	63.7	63.5	63.3	63.1	63.0	62.9	62.8	62.8	62.9	63.0	63.2	63.4	63.6	63.9	64.1	64.3	64.4	64.5	64.5
15	63.5	63.2	62.9	62.7	62.5	62.4	62.3	62.3	62.4	62.5	62.8	63.1	63.5	63.9	64.1	64.4	64.6	64.7	64.6
20	63.1	62.8	62.5	62.2	62.0	61.9	61.7	61.7	61.8	62.0	62.3	62.7	63.2	63.7	64.0	64.4	64.6	64.7	64.6
25	62.6	62.2	61.9	61.6	61.3	61.2	61.1	61.1	61.2	61.4	61.7	62.1	62.7	63.4	63.8	64.3	64.5	64.7	64.4
30	61.8	61.4	61.0	60.8	60.5	60.4	60.3	60.3	60.4	60.6	60.9	61.5	62.2	62.9	63.4	64.0	64.1	64.2	64.0
35	60.6	60.3	60.0	59.7	59.4	59.4	59.3	59.3	59.4	59.6	60.0	60.6	61.3	62.1	62.7	63.3	63.4	63.5	63.1
40	59.2	58.9	58.6	58.4	58.1	58.1	58.0	58.0	58.1	58.4	58.8	59.4	60.2	61.0	61.7	62.2	62.3	62.3	61.8
45	57.5	57.2	56.9	56.8	56.6	56.5	56.5	56.5	56.6	56.9	57.2	57.9	58.7	59.5	60.2	60.7	60.8	60.6	60.1
50	55.4	55.3	55.0	54.9	54.7	54.7	54.7	54.8	54.9	55.1	55.5	56.1	56.9	57.7	58.4	58.9	58.9	58.6	58.0
55	53.1	53.0	52.8	52.8	52.6	52.7	52.7	52.8	52.9	53.1	53.4	54.0	54.9	55.6	56.3	56.6	56.6	56.2	55.6
60	50.5	50.5	50.3	50.4	50.3	50.4	50.4	50.6	50.6	50.9	51.2	51.7	52.5	53.2	53.8	54.1	54.0	53.5	52.9
65	47.7	47.8	47.7	47.8	47.7	47.9	48.0	48.1	48.2	48.5	48.7	49.2	49.9	50.5	51.1	51.2	51.0	50.5	49.9
70	44.7	44.9	44.9	45.0	45.0	45.3	45.3	45.5	45.6	45.8	46.0	46.5	47.1	47.6	48.1	48.1	47.9	47.4	46.7
75	41.7	41.9	42.0	42.1	42.2	42.5	42.6	42.8	42.9	43.1	43.2	43.6	44.2	44.6	44.9	44.9	44.6	44.1	43.4
80	38.6	38.9	38.9	39.2	39.3	39.6	39.7	40.0	40.1	40.3	40.3	40.7	41.1	41.4	41.7	41.6	41.3	40.7	40.1
85	35.5	35.8	35.9	36.2	36.3	36.7	36.8	37.1	37.2	37.4	37.4	37.7	38.1	38.3	38.4	38.3	37.9	37.4	36.8
90	32.5	32.8	33.0	33.3	33.4	33.8	33.9	34.3	34.4	34.5	34.5	34.7	35.0	35.1	35.2	35.0	34.6	34.1	33.6
95	29.5	29.9	30.0	30.4	30.6	30.9	31.1	31.5	31.6	31.7	31.7	31.8	32.1	32.1	32.1	31.8	31.4	31.0	30.5
100	26.7	27.0	27.3	27.6	27.8	28.2	28.4	28.7	28.8	28.9	28.9	29.0	29.2	29.1	29.1	28.8	28.4	28.0	27.5
105	24.1	24.4	24.6	25.0	25.2	25.5	25.8	26.1	26.2	26.3	26.2	26.3	26.4	26.4	26.2	25.9	25.6	25.2	24.8
110	21.6	21.9	22.1	22.5	22.7	23.0	23.3	23.6	23.7	23.8	23.7	23.8	23.8	23.7	23.6	23.3	22.9	22.6	22.2
115	19.3	19.5	19.8	20.1	20.3	20.7	20.9	21.2	21.3	21.4	21.3	21.3	21.4	21.3	21.1	20.8	20.5	20.1	19.8
120	17.1	17.4	17.6	17.9	18.1	18.5	18.7	19.0	19.1	19.1	19.1	19.1	19.1	19.0	18.8	18.5	18.2	17.9	17.6
125	15.1	15.4	15.6	15.9	16.1	16.4	16.6	16.9	17.0	17.1	17.0	17.0	17.0	16.9	16.7	16.4	16.1	15.8	15.5
130	13.3	13.5	13.7	14.0	14.2	14.5	14.7	14.9	15.0	15.1	15.1	15.1	15.1	14.9	14.7	14.5	14.2	13.9	13.7
135	11.7	11.8	12.0	12.3	12.5	12.8	13.0	13.2	13.3	13.3	13.3	13.3	13.3	13.1	12.9	12.7	12.5	12.2	12.0
140	10.2	10.3	10.5	10.7	10.9	11.2	11.3	11.5	11.6	11.7	11.7	11.7	11.6	11.5	11.3	11.1	10.9	10.7	10.5
145	8.80	8.91	9.09	9.27	9.50	9.69	9.87	10.0	10.1	10.2	10.2	10.2	10.1	10.0	9.84	9.66	9.44	9.27	9.06
150	7.54	7.64	7.81	7.97	8.18	8.35	8.50	8.65	8.74	8.80	8.82	8.78	8.75	8.64	8.47	8.33	8.12	7.98	7.79
155	6.35	6.43	6.59	6.73	6.94	7.09	7.25	7.36	7.48	7.53	7.55	7.51	7.48	7.39	7.22	7.10	6.89	6.77	6.58
160	5.16	5.22	5.39	5.52	5.71	5.85	6.01	6.12	6.24	6.27	6.31	6.28	6.23	6.17	6.01	5.90	5.71	5.59	5.32
165	3.81	3.91	4.10	4.18	4.43	4.57	4.76	4.87	4.99	5.02	5.07	5.03	4.96	4.95	4.80	4.69	4.50	4.31	3.90
170	1.48	1.74	2.00	2.35	2.51	2.97	3.21	3.34	3.36	3.57	3.64	3.61	3.41	3.45	3.34	3.19	2.96	2.62	2.43
175	0.70	0.70	0.69	0.69	0.71	0.71	0.71	0.70	0.72	0.70	0.78	0.78	0.72	0.73	0.71	0.72	0.71	0.71	0.70
180	0.70	0.70	0.69	0.69	0.70	0.71	0.70	0.70	0.70	0.70	0.70	0.70	0.72	0.71	0.71	0.71	0.71	0.71	0.71

C Range: 0 - 360DEG  
 C Interval: 15.0DEG  
 Test Speed: HIGH  
 Temperature:25.3℃  
 Operators:DAMIN  
 Test Date:2023-12-23

γ Range: 0 - 180DEG  
 γ Interval: 5.0DEG  
 Test System:EVERFINE GO-2000B\_V1 SYSTEM V2.00.473  
 Humidity:65.0%  
 Test Distance:9.401m [K=1.0000]  
 Remarks:

LUMINOUS DISTRIBUTION INTENSITY DATA

Test:U:220.39V I:0.0449A P:5.0231W PF:0.5074 Freq:50.00Hz Lamp Flux:434.234x1 lm		
NAME: 球泡	TYPE:	WEIGHT:
SPEC.:	DIM.:	SERIAL No.:
MFR.: EVERFINE	SUR.: 1	Shielding Angle:

Table--2

UNIT: cd

C (DEG) \ γ (DEG)	285	300	315	330	345														
0	63.8	63.8	63.8	63.8	63.8														
5	64.1	64.1	64.0	63.9	63.9														
10	64.4	64.3	64.2	64.0	63.9														
15	64.5	64.4	64.2	63.9	63.8														
20	64.5	64.2	64.1	63.7	63.5														
25	64.3	63.9	63.7	63.2	62.9														
30	63.8	63.3	63.0	62.4	62.1														
35	62.8	62.3	61.9	61.3	61.0														
40	61.4	60.9	60.4	59.9	59.5														
45	59.7	59.1	58.6	58.1	57.7														
50	57.5	57.0	56.4	55.9	55.6														
55	55.0	54.5	53.9	53.5	53.2														
60	52.3	51.7	51.2	50.8	50.5														
65	49.2	48.7	48.2	47.9	47.7														
70	46.1	45.6	45.1	44.8	44.7														
75	42.8	42.4	41.9	41.7	41.5														
80	39.5	39.1	38.7	38.5	38.4														
85	36.3	35.9	35.5	35.3	35.3														
90	33.1	32.7	32.4	32.2	32.2														
95	30.0	29.7	29.4	29.2	29.3														
100	27.1	26.8	26.5	26.4	26.5														
105	24.4	24.1	23.8	23.8	23.8														
110	21.8	21.5	21.3	21.3	21.3														
115	19.5	19.2	19.0	19.0	19.1														
120	17.3	17.1	16.9	16.9	16.9														
125	15.3	15.1	14.9	14.9	15.0														
130	13.5	13.3	13.2	13.1	13.2														
135	11.8	11.6	11.5	11.5	11.5														
140	10.3	10.1	10.1	9.99	10.0														
145	8.92	8.77	8.71	8.64	8.68														
150	7.67	7.52	7.48	7.41	7.45														
155	6.48	6.34	6.29	6.20	6.27														
160	5.32	5.15	5.12	4.88	5.05														
165	4.03	3.83	3.81	3.31	3.71														
170	1.90	1.41	1.14	1.20	1.17														
175	0.70	0.70	0.70	0.70	0.70														
180	0.70	0.70	0.70	0.70	0.70														

C Range: 0 - 360DEG  
 C Interval: 15.0DEG  
 Test Speed: HIGH  
 Temperature:25.3°C  
 Operators:DAMIN  
 Test Date:2023-12-23

γ Range: 0 - 180DEG  
 γ Interval: 5.0DEG  
 Test System:EVERFINE GO-2000B\_V1 SYSTEM V2.00.473  
 Humidity:65.0%  
 Test Distance:9.401m [K=1.0000]  
 Remarks: